

10,560 BHP – AHTS SEABULK RAVEN



10,560 BHP – AHTS SEABULK RAVEN

DIMENSIONS

LENGTH OVERALL	68.02 m	223.10 ft
BREADTH MLD	14.50 m	47.56 ft
DEPTH	6.90 m	22.63 ft
DRAFT	5.90 m	19.35 ft
DEADWEIGHT	2015 t	
GROSS TONNAGE	1063 t	
NET TONNAGE	483 t	

CAPACITIES/TRANSFER RATES

FUEL OIL	827.7 m ³ – 100 m ³ /hr @ 60 m head
DRILL WATER	1057.4 m ³ – 2 x 100 m ³ /hr @ 60 m head
POTABLE WATER	251.0 m ³ – 100 m ³ /hr @ 60 m head
DRY BULK	268.8 m ³ – 45 t/hr @ 80 psi
LIQUID MUD	224.4 m ³ – 2 x 50 m ³ /hr @ 18 bar
BRINE	192.4 m ³ – 100 m ³ /hr @ 9 bar
CONNECTION	Weeco 4"
FREE DECK SPACE	37 m x 11 m = 407 m ²
DECK STRENGTH	780 t – 5 t/m ²
DISPERSANT	12 m ³

DECK EQUIPMENT

AHT WINCH	Hyd Brattvaag SL250 35/79 triple drum waterfall, 250 t line pull and 350 t brake (500 m water depth)
SPOOLING DRUM	3 x 1000 m x 64 mm wire diameter
TOW WIRE	1000 m x 64 mm wire diameter
SPARE TOWLINE	1000 m x 64 mm wire diameter
WORKING WIRE	2 x 730 m x 57 mm diameter
CHAIN LOCKERS	2 x 30 m ³
AH TONG	Ulstein
TOWING PINS	2 x Ulstein 250 t SWL
SHARK JAW	1 x 250 t SWL
STERN ROLLER	3.66 m x 2.5 m diameter 350 t SWL
RIG CHAIN GYPSIES	2 x 3" – 2 x 3.25"
TUGGER WINCHES	2 x Brattvaag hydraulic 10 t – 32 m/min
CAPSTANS	3 x Brattvaag hydraulic 5 t – 12 m/min
DECK CRANE	1 x 2 t at 10 m
ANCHOR WIRES	2 x 1500 m/38 mm
WINDLASS	2 x 38 mm Brattvaag hydraulic 2 x 1000 m
ANCHORS	2 x 2400 kg stockless + 1 spare
JOYSTICK	Ulstein

MACHINERY

MAIN ENGINES	4 x Bergen D, 10,560 BHP total @ 825 rpm
BOW THRUSTERS	2 x Ulstein UP 159-TV 800 BHP V.P.P. 18 t
STERN THRUSTER	1 x Ulstein UP 159-TV 800 BHP V.P.P. 9 t
PROPELLERS	2 x 3050 mm diam V.P.P.
RUDDERS	2 x Simplex
BOLLARD PULL	128 t
AUXILIARIES GENERATORS	2 x CAT 3408, 305Kw, 440V, 60Hz
SHAFT GENERATORS	2 x Siemen s, 1570Kw, 440V, 60Hz

SPEED/CONSUMPTION

MAXIMUM SPEED	14 kts on about 22 t/day
ECONOMIC SPEED	11.5 kts on about 12.5 t/day
IN PORT	1.1 t/day
STAND BY AT SEA	5.5 t/day

ACCOMMODATION

BERTHS	29 berths in 14 cabins = 3 x 1 berth cabins
CREW MAXIMUM	17 7 x 2 berth cabins
PASSENGERS	12 3 x 4 berth cabins
HOSPITAL	2
RESCUE CAPACITY	200 survivors

FIRE FIGHTING

PUMPS	1 x Thune 3600 m ³ /hr
MONITORS	(water/foam) 2 x Thune 1800 m ³ /hr
THROW HEIGHT/LENGTH	100 m / 150 m

STAND-BY RESCUE

RESCUE CAPACITY	200 survivors
MOB FAST RESCUE CRAFT	1 x Holen HT 24, 180 HP – 20 person
LIFE BOAT	1 x Harding, 80 HP – 20 person
RESCUE NETS / BASKET	2 / 1

ANTI-POLLUTION SYSTEM

DISPERSANT STORAGE	12 m ³
DISPERSANTS BOOMS	2 x 7 m
BOOSTER PUMPS	4 x 700 m ³ /hr @ 29 m head

NAVIGATION/COMMUNICATION

RADARS	1 x 3 cm + 1 x 5 cm Furuno
GYRO	1 x Robertson
AUTOPILOT	1 x Robertson
GMDSS	A1 + A2 + A3
GPS	2 x Ship mate RS 5000
ECHO SOUNDER	1 x Simrad
NAVTEX	1 x Shipmate RS 4500B
INMARSAT-C	1 x Thane, 1 x Scanti
SSB	800/400 W MF/HF
VHF	2 x Taiyo 25 W
VHF PORTABLE	3 x 5 W

BUILT

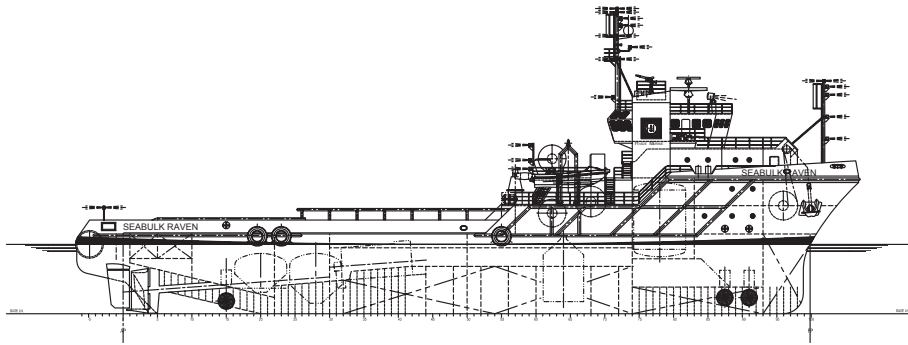
YEAR	1980
BUILDER	Ulstein Trading Ltd. (UT-708)
CLASS	DNV+1A1-ICES Tug Supply Ves-SF-EO-Oil Rec
FLAG / PORT OF REGISTRY	Marshal Island / Majuro
CALL SIGN	V7BL7
OFFICIAL NUMBER / IMO NUMBER	1299 / 7911088

This specification is preliminary and subject to change without notice. Exact tank capacities, deadweight, deck cargo capacity and other figures that have been calculated and may change when the actual vessel is delivered.

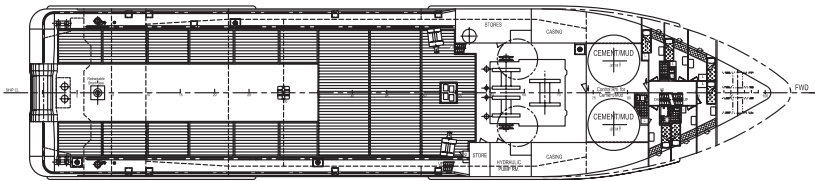
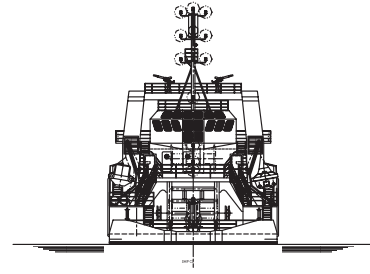
10,560 BHP – AHTS SEABULK RAVEN



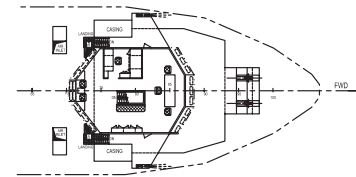
10,560 BHP – AHTS SEABULK RAVEN



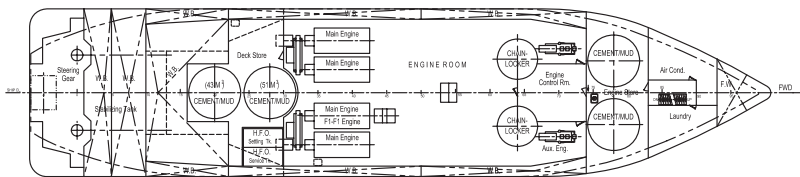
OUTBOARD PROFILE



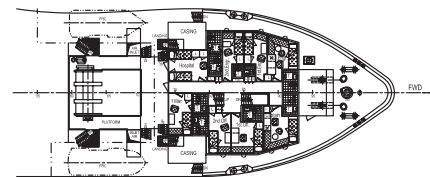
SHELTER DECK



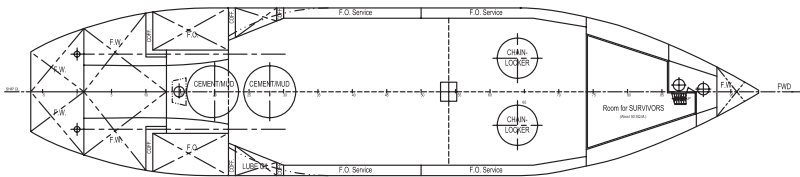
BRIDGE DECK



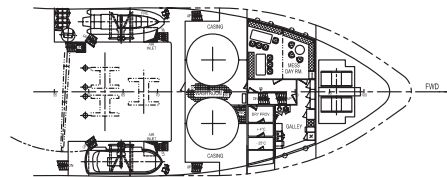
MAIN DECK



B - DECK (F/CLE DK.)



UNDER MAIN DECK



A - DECK