

12,280 BHP – AHTS SEACOR VANTAGE



12,280 BHP – AHTS SEACOR VANTAGE

MAIN PARTICULARS

LENGTH OVERALL	221 ft.	67 m
LENGTH BP	231 ft.	70 m
BEAM	52 ft.	16 m
DEPTH	22 ft.	7 m
LIGHT DRAFT	10 ft.	3 m
LOADED DRAFT	18.87 ft.	5.49 m
SUMMER FREEBOARD	3 ft.	1 m
LIGHTSHIP	2,207 LT.	2,247 MT.

CAPACITIES

DRILL WATER	326,200 USG	1,235 m ³
POTABLE WATER	177,000 USG	672 m ³
FUEL	234,300 USG	885 m ³
LIQUID MUD	3,940 BBLs	636 m ³
DRY BULK	7,920 ft. ³	224 m ³
BRINE	16,800 USG	64 m ³
MAX RIG CHAIN	19,800 ft.	6,035 m
DEADWEIGHT	2,455 LT.	2,500 MT.

CARGO DECK

TONNAGE	1,377.89 LT.	1,403 MT.
STRENGTH	0.5 LT./ft. ²	5 MT./m ²
LENGTH	143 ft.	44 m
WIDTH	41 ft.	12 m
CLEAR AREA	5,863 ft. ²	518 m ²

TONNAGE

GRT	2,283 tons
NRT	684 tons

MACHINERY

MAIN ENGINES	4 EMD 16-645 E7B
BRAKE HORSEPOWER	12280
REDUCTION GEARS	2 Reintjes Double Reduction
GEAR RATIO	5:1
PROPELLERS	2 Berg 4 Blade CPP
RUDDERS	140 Inch x 179 Inch
SHAFT GENERATORS	2 x 1600kW
AUXILIARY GENERATORS	1 x 350kW
EMERGENCY GENERATOR	1 x 120kW
BOW THRUSTERS	2 x 600 BHP Electric Drive Tunnel
STERN THRUSTER(S)	1 x 600 BHP Electric Drive Tunnel

TOWING & ANCHOR HANDLING

WINCH MODEL	Smatco 116-EAW-660W/660W	
LINE PULL	485 LT.	494 MT.
WIRE CAPACITY	2) x 10,100 ft - 3" Wire	(2) x 3078m - 76mm Wire
BOLLARD PULL	137 LT.	129.27 MT.
CHAIN STOPPER(S)	2 Triplex Shark Jaw 344 LT. – 350 MT.	
TOWING PINS	2 x Triplex Shark Jaw	
STERN ROLLER	13 ft. x 7 ft. - 0 LT.	4 M. x 2 M. - 0 MT.
TUGGER WINCHES	2 x 20 LT. – 20 MT.	

PERFORMANCE

MAXIMUM SPEED	14 knots
CRUISING SPEED	11 knots
MAXIMUM FUEL CONSUMPTION	440 USG/Hr 40 m ³ /24 Hrs
CRUISING FUEL CONSUMPTION	198 USG/Hr 18 m ³ /24 Hrs

DISCHARGE RATES

DRILL WATER	550 USG/min @ 300 ft.	125 m ³ /Hr @ 91 m
POTABLE WATER	550 USG/min @ 300 ft.	125 m ³ /Hr @ 91 m
FUEL	550 USG/min @ 300 ft.	125 m ³ /Hr @ 91 m
METHANOL	0 USG/min @ 0 ft.	0 m ³ /Hr @ 0 m
LIQUID MUD	1,000 USG/min @ 165 ft.	227 m ³ /Hr @ 50 m
DRY BULK	1,000 ft. ³ /Hr @ 80 PSI	28 m ³ /Hr @ 6 bar
BRINE	1,000 USG/min @ 165 ft.	227 m ³ /Hr @ 50 m

ACCOMMODATIONS

CABINS/BERTHS	16/24
OFFICERS	2 Suite Office & Qtrs & Head + 2 Single Shared 1 Head
CREW	4 Single Shared 2 Head
VIP	2 Double Shared 1 Head
PASSENGERS	6 Double Shared 3 Head
LOUNGE	10
MESS	16

ELECTRONICS & CONTROLS

JOYSTICK	Ongsberg Simrad SDP-01
DEPTH SOUNDER	None
DGPS	None
DYNAMIC POSITIONING	Kongsberg Simrad SDP-01
GPS	Two Trimble NT-100
GYRO	Robertson RGC-11
SSB	Yes
VHF	Yes
RADAR(S)	Decca BM-250 & Decca BM-180
RADIO SYSTEM	Sperry A3 GMDSS
INTERNET E-MAIL	Globe Offshore
WEATHER RADIO	XM

SPECIAL EQUIPMENT

CRANE	N/A 5 LT @ 30 ft. – 5 MT @ 9 M
SURVIVAL CRAFT	(2) 25 Man Inflatable Life Raft
WINDLASS	N/A 0 inches 0 ft. 0 mm 0 M
RESCUE BOAT	15.5ft Zodiac Hurricane w/50HP Motor
EXTERNAL FIFI	2600GPM @ 450ft/137m
NUMBER OF MONITORS	1

DOCUMENTATION

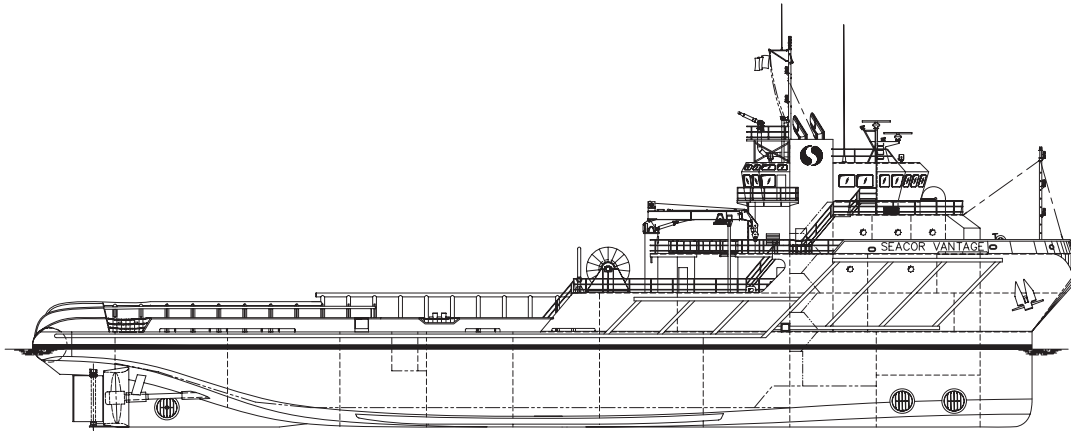
CLASS	ABS +A1, AMS
FLAG	United States
SOLAS	Full
USCG	USCG Sub L, OSV
YEAR BUILT	1998
OFFICIAL NUMBER	1065404
RADIO CALL SIGN	WCY5598
BUILDER	Halter Marine Inc.

This specification is preliminary and subject to change without notice. Exact tank capacities, deadweight, deck cargo capacity and other figures that have been calculated and may change when the actual vessel is delivered.

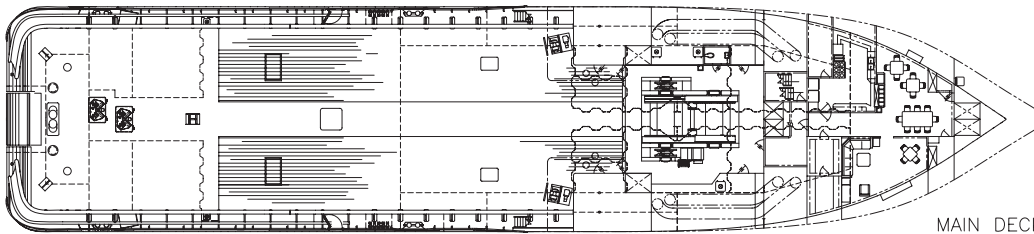
12,280 BHP – AHTS SEACOR VANTAGE



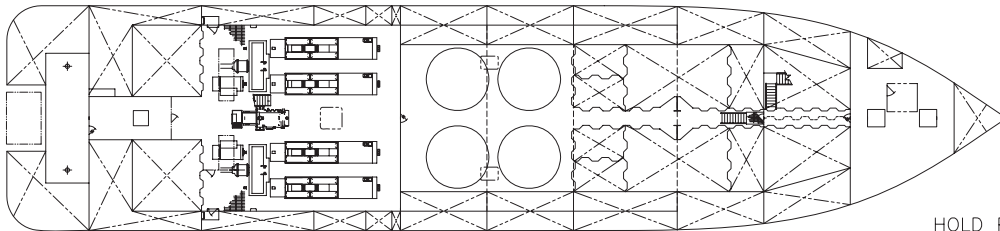
12,280 BHP – AHTS SEACOR VANTAGE



OUTBOARD PROFILE



MAIN DECK



HOLD PLAN