

12,280 BHP – AHTS SEACOR VISION



12,280 BHP – AHTS SEACOR VISION

MAIN PARTICULARS

LENGTH OVERALL	225 ft.	69 m
LENGTH BP	215 ft.	66 m
BEAM	52 ft.	16 m
DEPTH	22 ft.	7 m
LIGHT DRAFT	11 ft.	3 m
LOADED DRAFT	18.84 ft.	6 m
SUMMER FREEBOARD	3 ft.	1 m
LIGHTSHIP	2,059 LT.	2,096 MT.

CAPACITIES

DRILL WATER	200,000 USG	757 m ³
POTABLE WATER	177,890 USG	673 m ³
FUEL	186,730 USG	707 m ³
LIQUID MUD	3,000 BBLS	477 m ³
DRY BULK	7,920 ft. ³	224 m ³
BRINE	84,462 USG	320 m ³
MAX RIG CHAIN	22,500 ft.	6,858 m
DEADWEIGHT	2,180 LT.	2,220 MT.

CARGO DECK

TONNAGE	1,200 LT.	1,222 MT.
STRENGTH	0.51 LT./ft. ²	5 MT./m ²
LENGTH	127 ft.	39 m
WIDTH	41 ft.	12 m
CLEAR AREA	5,207 ft. ²	484 m ²

TONNAGE

GRT	2,136 tons
NRT	640 tons

MACHINERY

MAIN ENGINES	4 NREC 16-645-E7B
BRAKE HORSEPOWER	12280
REDUCTION GEARS	2 Reintjes Double Reduction
GEAR RATIO	5.488:1
PROPELLERS	2 Berg 4 Blade CPP
RUDDERS	140 in x 179 in
SHAFT GENERATORS	2 x 1600kW
AUXILIARY GENERATORS	1 x 350 kW
EMERGENCY GENERATOR	1 x 120 kW
BOW THRUSTERS	2 x 600 BHP Electric Drive Tunnel
STERN THRUSTER(S)	1 x 600 BHP Electric Drive Tunnel

TOWING & ANCHOR HANDLING

WINCH MODEL	Double Drum Waterfall	
LINE PULL	485 LT.	494 MT.
WIRE CAPACITY	15,800 ft. x 3 inch wire	4,816 M. x 76 mm. of wire
TRACTION WINCH LINE PULL	0 LT. @ 0 ft./min	0 MT. @ 0 M./min
TRACTION WINCH WIRE CAPACITY	0 ft. x 0 inch wire	0 M. x 0 mm. of wire
BOLLARD PULL	158 LT.	161 MT.
CHAIN STOPPER(S)	2 Triplex Shark Jaw 344 LT. – 350 MT.	
TOWING PINS	2 x Pair Triplex	
STERN ROLLER	13 ft. x 8 ft. - 0 LT.	4 M. x 2 M. - 0 MT.
TUGGER WINCHES	2 x 220 LT. – 224 MT.	
CAPSTANS	None 0	0

PERFORMANCE

MAXIMUM SPEED	14 knots
CRUISING SPEED	12 knots
MAXIMUM FUEL CONSUMPTION	440 USG/Hr 40 m ³ /24 Hrs
CRUISING FUEL CONSUMPTION	198 USG/Hr 18 m ³ /24 Hrs

DISCHARGE RATES

DRILL WATER	600 USG/min @ 200 ft.	136 m ³ /Hr @ 61 m
POTABLE WATER	600 USG/min @ 200 ft.	136 m ³ /Hr @ 61 m
FUEL	600 USG/min @ 200 ft.	136 m ³ /Hr @ 61 m
METHANOL	0 USG/min @ 0 ft.	0 m ³ /Hr @ 0 m
LIQUID MUD	1,000 USG/min @ 165 ft.	227 m ³ /Hr @ 50 m
DRY BULK	1,000 ft. ³ /Hr @ 80 PSI	28 m ³ /Hr @ 6 bar
BRINE	1,000 USG/min @ 165 ft.	227 m ³ /Hr @ 50 m

ACCOMMODATIONS

CABINS/BERTHS	16/24
OFFICERS	2 Suite Office w/ Head + 2 Single w/ Shared 1 Head
CREW	4 Single Shared 2 Head
VIP	2 Double Shared 2 Head
PASSENGERS	6 Dopuble Shared 3 Head
LOUNGE	10
MESS	16

ELECTRONICS & CONTROLS

JOYSTICK	Kongsberg Simrad STP-600
DEPTH SOUNDER	Sperry ES-5000
DGPS	Starlink DNAV-212
DYNAMIC POSITIONING	Kongsberg Simrad STP-600
GPS	One Micrologic ML-250 & One trimble NT-100
GYRO	Robertson RGC-11
SSB	Yes
VHF	Yes
RADAR(S)	One Decca MB-250 & One Decca SM-180
RADIO SYSTEM	Sperry A3 GMDSS
INTERNET E-MAIL	Glode Offshore
WEATHER RADIO	XM

SPECIAL EQUIPMENT

CRANE	N/A 5 LT @ 30 ft. – 5 MT @ 9 M
SURVIVAL CRAFT	2 Inftable Life Rafts
WINDLASS	Double Wildcat 2 inches 0 ft. 51 mm 0 M
RESCUE BOAT	Ambar AM-420
EXTERNAL FIFI	450ft/137m @ 2600 GPM
NUMBER OF MONITORS	1

DOCUMENTATION

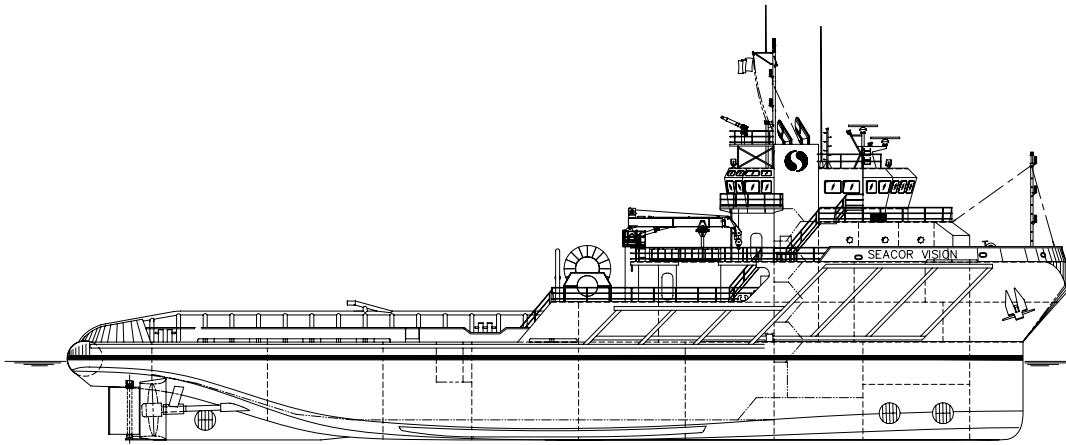
CLASS	12,280 BHP AHTS / DP
FLAG	United States
SOLAS	Full
USCG	USCG Sub L, OSV, ABS +A1 AMS, Solas
YEAR BUILT	1997
OFFICIAL NUMBER	1046754
RADIO CALL SIGN	WCX 5693
BUILDER	Halter Marine Inc.

This specification is preliminary and subject to change without notice. Exact tank capacities, deadweight, deck cargo capacity and other figures that have been calculated and may change when the actual vessel is delivered.

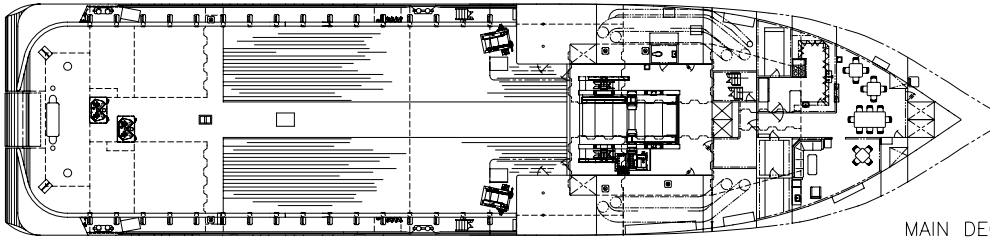
12,280 BHP – AHTS SEACOR VISION



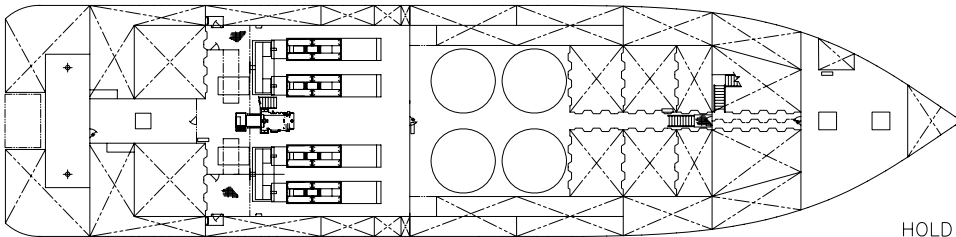
12,280 BHP – AHTS SEACOR VISION



OUTBOARD PROFILE



MAIN DECK



HOLD PLAN