

14,000 HP DP-2 AHTS SEACOR VANGUARD



14,000 HP DP-2 AHTS SEACOR VANGUARD

MAIN PARTICULARS

LENGTH OVERALL	255 ft.	78 m
LENGTH BP	245 ft.	75 m
BEAM	60 ft.	18 m
DEPTH	26 ft.	8 m
LIGHT DRAFT	13 ft.	3.9 m
LOADED DRAFT	22 ft.	6.7 m
LIGHTSHIP	3,370 LT	3,424 MT
DEADWEIGHT	3,276 LT	3,328 MT

CAPACITIES

DRILL WATER/BALLAST	537,830 USG	2,035.9 m ³
POTABLE WATER	127,978 USG	484.4 m ³
FUEL	306,145 USG	1,157.8 m ³
LIQUID MUD	3,676 BBLS	584.4 m ³
DRY BULK	10,350 ft ³	293 m ³
BRINE	41,580 USG	157.4 m ³
MAX RIG CHAIN	15,000 ft x 3"	4,572 m x 76mm

CARGO DECK

TONNAGE	1,083 LT	1,100 MT
STRENGTH	1,024 lbs/ft. ²	5 MT/m ²
LENGTH	125 ft.	38 m
WIDTH	53 ft.	16 m
CLEAR AREA	6,625 ft. ²	615 m ²

TONNAGE

GRT	2,983
NRT	894

MACHINERY

MAIN ENGINES	4 x EMD 16-645F7B, 3500 BHP @ 900RPM	
BRAKE HORSEPOWER	14,000	
REDUCTION GEARS	2 x Reintjes DLG3331(twin input)	
GEAR RATIO	5:1	
PROPELLERS	2 x Berg 4 Blade 140" Dia. CPP	
RUDDERS	2 Independent Double Plate	
SHAFT GENERATORS	2 x KATO, 2000 kW @ 600VAC	
AUXILIARY GENERATORS	1 x Caterpillar 3508, 400 kW @ 480VAC	
AUXILIARY GENERATORS	1 x Caterpillar C-32, 781 kW @ 480 VAC	
EMERGENCY GENERATOR	1 x Caterpillar 3306B, 190 kW @ 480 VAC	
BOW THRUSTERS	2 x 800 HP Electric Drive FPP Tunnel	
STERN THRUSTER(S)	1 x 800 HP Electric Drive FPP Tunnel 1 x 800 HP Electric Drive CPP Tunnel	

TOWING & ANCHOR HANDLING

WINCH MODEL	Smatco 140E/750TW-3200V	
140 WORK DRUM LINE PULL	500 LT	508 MT
140 WORK DRUM WIRE CAPACITY	11,000 ft. x 3"	3,353m x 76.2mm
STORAGE REEL CAPACITY	2 x 23,400 ft - 3" Wire 2 x 13,530 ft - 3" Wire	2 x 7132m - 76mm Wire; 2 x 4124m - 76mm Wire
750 TRACTION WINCH LINE PULL	335 LT Continuous	341 MT
750 TRACTION WINCH WIRE CAPACITY	10,000 ft. x 3.5"	3,048m x 88.9mm
BOLLARD PULL	160 LT	163 MT
CHAIN STOPPER(S)	2 Triplex Shark Jaw 700 LT	711 MT
TOWING PINS	4 x 2-700Ton Tow & 2-700Ton Angle	
STERN ROLLER	3 piece roller 8 ft x 24 ft. - 500 LT 2.5m x 7.3m - 508 MT	
TUGGER WINCHES	2 x fwd 12 LT 2 x stern 8 LT	12 MT 8 MT

PERFORMANCE

MAXIMUM SPEED	14.6 knots	
CRUISING SPEED	12.3 knots	
MAXIMUM FUEL CONSUMPTION	583 USG/Hr	53 m ³ /24 Hrs
CRUISING FUEL CONSUMPTION	335 USG/Hr	31 m ³ /24 Hrs

DISCHARGE RATES

BALLAST/DRILL WATER	1,000 USG/min @ 200 ft.	227 m ³ /Hr @ 61 m
POTABLE WATER	1,000 USG/min @ 200 ft.	227 m ³ /Hr @ 61 m
FUEL	600 USG/min @ 200 ft.	136 m ³ /Hr @ 61 m
LIQUID MUD	1,000 USG/min @ 170 ft.	227 m ³ /Hr @ 50 m
DRY BULK (FREE AIR)	1,000 ft./min @ 80 PSI	28 m/min @ 6 bar
BRINE	250 USG/min @ 180 ft.	57 m ³ /Hr @ 55 m

ACCOMMODATIONS

CABINS/BERTHS	16/30 (Total)
OFFICERS	2 Suite w/Office & Head + 2 Double w/Shared Head
CREW	4 Double Shared 2 head
VIP	4 Double Shared 2 Head
PASSENGERS	6 Double Shared 3 Head
LOUNGE	12
MESS	16

ELECTRONICS & CONTROLS

DYNAMIC POSITIONING	Kongsberg K-Pos, Class II
INDEPENDENT JOYSTICK	Kongsberg C-Joy
DGPS	3 x C-Nav 3050
GPS	Micrologic ML-250
GYRO	3 x Navigat Mk1
LASER RADAR	Fanbeam 4.2
ANEMOMETER	3 x Gill Wind Observer II
GMDSS	Area 3
VHF	Four
RADAR(S)	Decca BM-250 & BM-180
INTERNET E-MAIL	Satellite VSAT / Globe Wireless
CCTV SYSTEM	6 Monitors, 20 Cameras all on DVR
WEATHER RADIO	XM
DEPTH SOUNDER	Sperry ES-5000

SPECIAL EQUIPMENT

CRANE	EBC TC30	15 LT	15.24 MT
SURVIVAL CRAFT	4 x 25 Person Inflatable Liferrafts 2 x 6 Person Inflatable Liferrafts		
WINDLASS	McElroy 2 inch chain	51mm	
RESCUE BOAT	Ambar AM420		
EXTERNAL FIFI	2,645 GPM @ 450ft/137m		
NUMBER OF MONITORS	1		

DOCUMENTATION

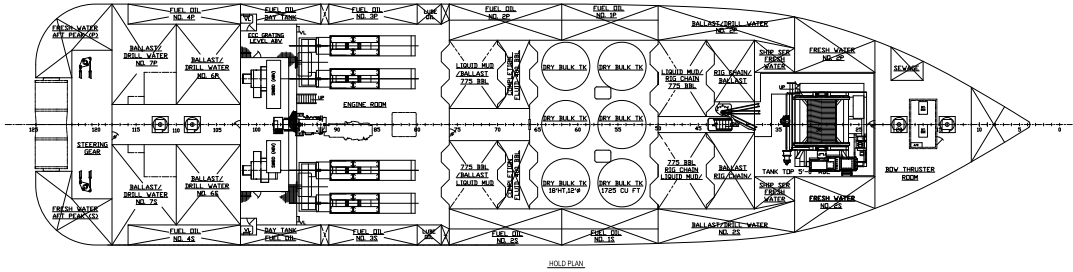
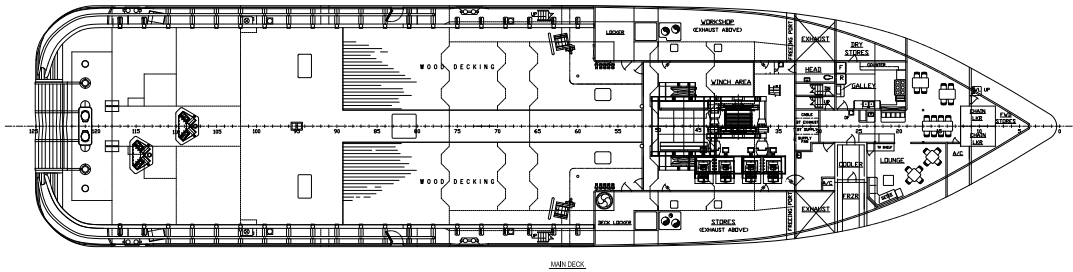
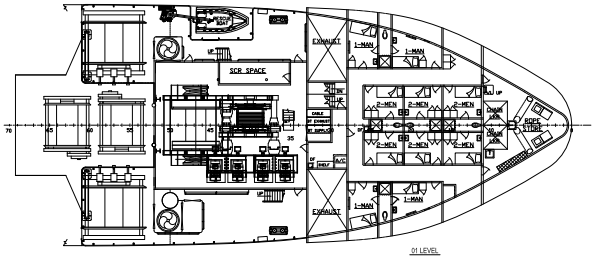
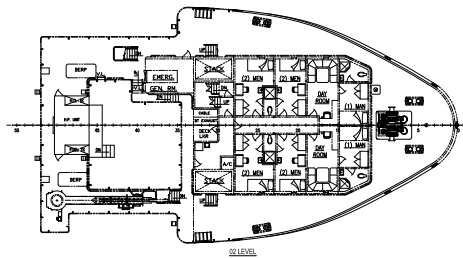
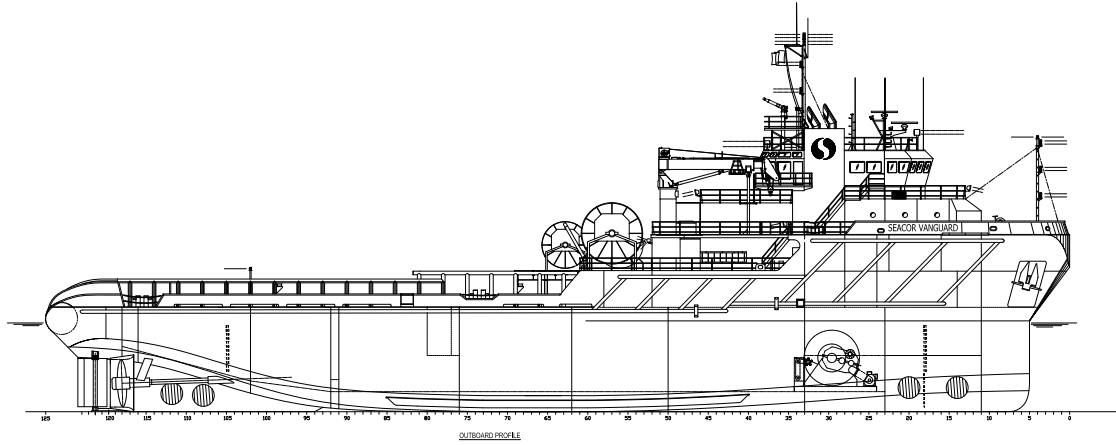
CLASS	ABS-A1, Towing Service, AMS, DPS-2
FLAG	United States
SOLAS	Full
USCG	USCG Sub L, OSV
YEAR BUILT	1998
OFFICIAL NUMBER	1059683
RADIO CALL SIGN	WDC3760
BUILDER	Halter Marine Inc.

This specification is preliminary and subject to change without notice. Exact tank capacities, deadweight, deck cargo capacity and other figures that have been calculated and may change when the actual vessel is delivered.

14,000 HP DP-2 AHTS SEACOR VANGUARD



14,000 HP DP-2 AHTS SEACOR VANGUARD



DP CAPABILITY

