

# 150' MINISUPPLY HILTON JOSEPH



150' MINISUPPLY HILTON JOSEPH

## MAIN PARTICULARS

LENGTH OVERALL	150 ft.	46 m
LENGTH BP	129 ft.	39 m
BEAM	36 ft.	11 m
DEPTH	11.5 ft.	4 m
LIGHT DRAFT	5 ft.	2 m
LOADED DRAFT	10 ft.	3 m
SUMMER FREEBOARD	2 ft.	1 mm
LIGHTSHIP	382 LT.	389 MT.

## CAPACITIES

DRILL WATER	62,879 USG	238 m <sup>3</sup>
FUEL	31,486 USG	119 m <sup>3</sup>
LIQUID MUD	1,199 BBLS	191 m <sup>3</sup>
METHANOL	515 BBLS	82 m <sup>3</sup>
POTABLE WATER	15,288 USG	58 m <sup>3</sup>
DEADWEIGHT	480 LT.	489 MT.

## CARGO DECK

TONNAGE	400 LT.	407 MT.
STRENGTH	0.24 lbs./ft. <sup>2</sup>	2 MT./m <sup>2</sup>
LENGTH	98 ft.	30 m
WIDTH	32 ft.	10 m
CLEAR AREA	3,136 ft. <sup>2</sup>	291 m <sup>2</sup>

## TONNAGE

GRT	99 US tons	443 tons
NRT	50 US tons	132 tons

## MACHINERY

MAIN ENGINES	2 - Detroit 8V149
BRAKE HORSEPOWER	1520
REDUCTION GEARS	TwinDisc MG 520
GEAR RATIO	5:1
PROPELLERS	62X54
RUDDERS	2
AUXILIARY GENERATORS	2-75KW / GM 671
BOW THRUSTERS	Shottel S103L /GM671
LIQUID MUD CIRCULATION	Ships Pump

## PERFORMANCE

MAXIMUM SPEED	12 knots	
CRUISING SPEED	10 knots	
MAXIMUM FUEL CONSUMPTION	74 USG/Hr	7 m <sup>3</sup> /24 Hrs
CRUISING FUEL CONSUMPTION	58 USG/Hr	5 m <sup>3</sup> /24 Hrs

## DISCHARGE RATES

DRILL WATER	400 USG/min @ 80 ft.	91 m <sup>3</sup> /Hr @ 24 m
POTABLE WATER	400 USG/min @ 80 ft.	91 m <sup>3</sup> /Hr @ 24 m
FUEL OIL	400 USG/min @ 80 ft.	91 m <sup>3</sup> /Hr @ 24 m
LIQUID MUD	700 USG/min @ 150 ft.	159 m <sup>3</sup> /Hr @ 46 m
METHANOL	400 USG/min @ 80 ft.	91 m <sup>3</sup> /Hr @ 24 m

## ACCOMMODATIONS

CABINS/BERTHS	5/18
OFFICERS	2
CREW	3
VIP	Stateroom
PASSENGERS	19
LOUNGE	7
MESS	12

## ELECTRONICS & CONTROLS

DEPTH RECORDER	Datamarine
DP	No
GPS	2-Fururno GP31 & JRC
RADAR(S)	2 ea Furuno
HF RADIO	Null
SSB	SEA222
INTERNET E-MAIL	Globe Wireless
VHF	2
AUTOPILOT	Standard Horizon
WEATHER RADIO	XM

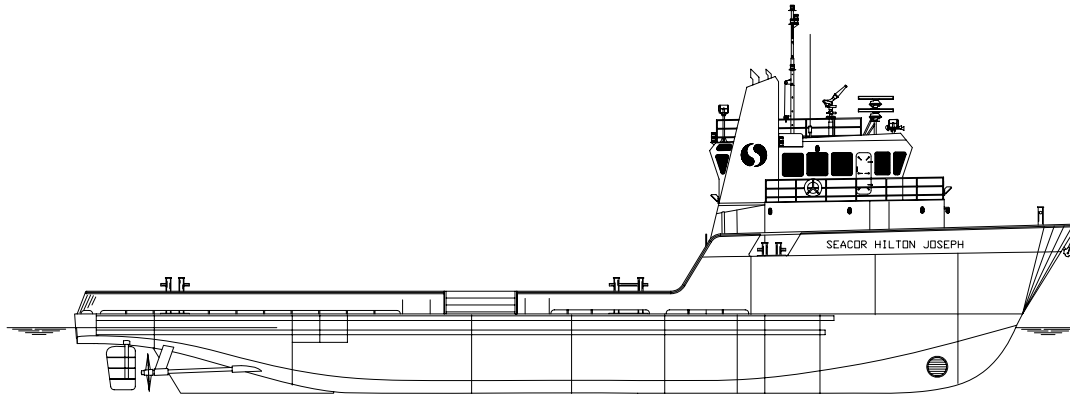
## SPECIAL EQUIPMENT

WINDLASS	N/A	0 inches	0 ft.	0 mm	0 m
EXTERNAL FIFI	N/A				
NUMBER OF MONITORS	1				
EEP	Equipped				

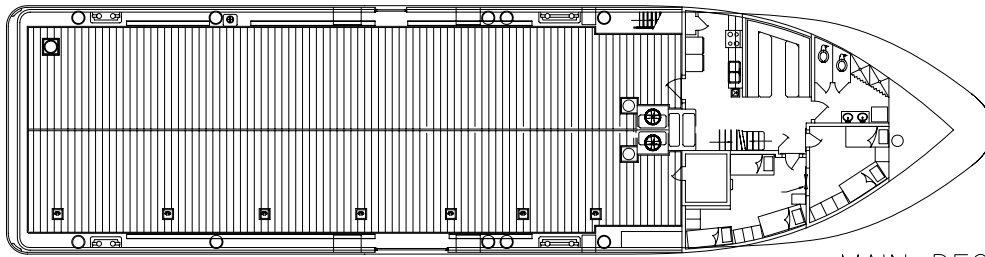
## DOCUMENTATION

CLASS	145 FT. MS
FLAG	United States
USCG	USCG Sub L, OSV, ABS Int Load Line
YEAR BUILT	1997
OFFICIAL NUMBER	1059402
BUILDER	Bollinger

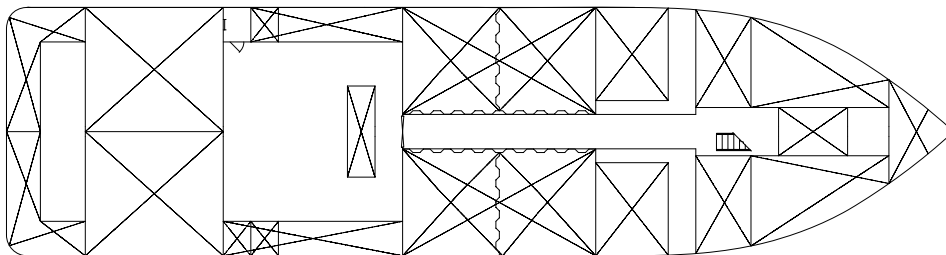
This specification is preliminary and subject to change without notice. Exact tank capacities, deadweight, deck cargo capacity and other figures that have been calculated and may change when the actual vessel is delivered.



OUTBOARD PROFILE



MAIN DECK



HOLD PLAN