

# 152' CREW/FSV SEABULK St CHARLES



152' CREW/FSV SEABULK St CHARLES

## MAIN PARTICULARS

LENGTH OVERALL	152 ft.	46 m
BEAM	30 ft.	9 m
DEPTH	11.5 ft.	4 m
LIGHT DRAFT	5 ft.	2 m
LOADED DRAFT	8 ft.	2 m

## CAPACITIES

DRILL WATER	31,139 USG	118 m <sup>3</sup>
POTABLE WATER	31,139 USG	118 m <sup>3</sup>
FUEL	15,514 USG	59 m <sup>3</sup>

## CARGO DECK

LENGTH	90 ft.	27 m
WIDTH	28 ft.	9 m
CLEAR AREA	2,520 ft. <sup>2</sup>	234 m <sup>2</sup>

## TONNAGE

GRT	98 US tons	309 tons
-----	------------	----------

## MACHINERY

MAIN ENGINES	(5) 3412 DITA Caterpillars
BRAKE HORSEPOWER	3820

## PERFORMANCE

MAXIMUM SPEED	24 knots	
CRUISING SPEED	22 knots	
MAXIMUM FUEL CONSUMPTION	130 USG/Hr	12 m <sup>3</sup> /24 Hrs
CRUISING FUEL CONSUMPTION	125 USG/Hr	11 m <sup>3</sup> /24 Hrs

## DISCHARGE RATES

### ACCOMMODATIONS

PASSENGERS	72 Null
------------	---------

### ELECTRONICS & CONTROLS

DEPTH SOUNDER	Data Marine 3000
RADAR(S)	(2) Furuno 8100
SSB	(1) Sea 222
INTERNET E-MAIL	Globe Wireless

### SPECIAL EQUIPMENT

NUMBER OF MONITORS	Elkhart 292-6
--------------------	---------------

### DOCUMENTATION

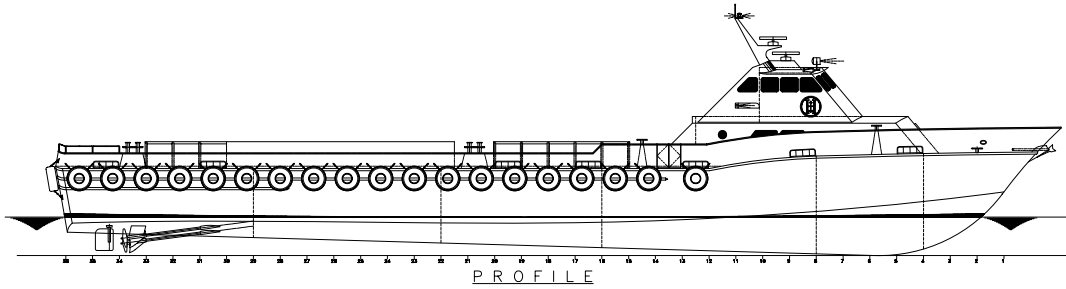
CLASS	152 FT. CB
FLAG	US
USCG	152 Crew
YEAR BUILT	1993
BUILDER	Breaux's Bay Craft

This specification is preliminary and subject to change without notice. Exact tank capacities, deadweight, deck cargo capacity and other figures that have been calculated and may change when the actual vessel is delivered.

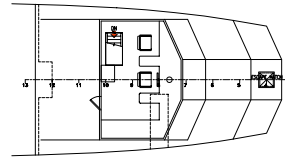
# 152' CREW/FSV SEABULK St CHARLES



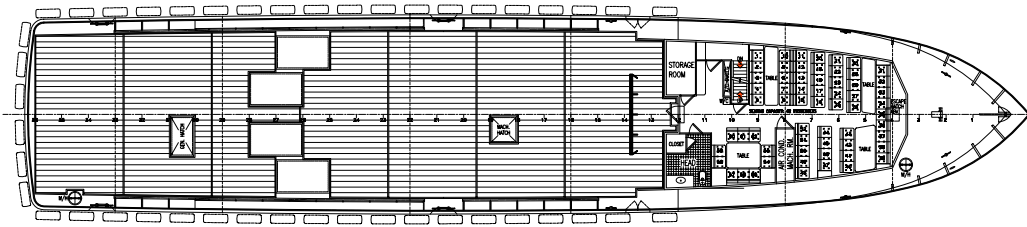
152' CREW/FSV SEABULK St CHARLES



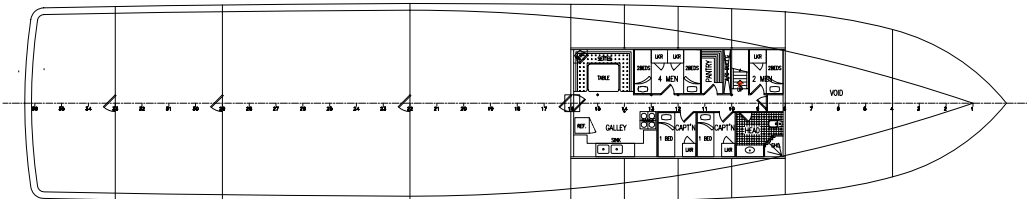
PROFILE



PILOT HOUSE



MAIN DECK PLAN



BELOW DECK PLAN