

160' MINISUPPLY SEACOR QUEST



160' MINISUPPLY SEACOR QUEST

MAIN PARTICULARS

LENGTH OVERALL	159 ft.	48 m
LENGTH BP	144 ft.	44 m
BEAM	36 ft.	11 m
DEPTH	12 ft.	4 m
LIGHT DRAFT	7 ft.	2.1 m
LOADED DRAFT	10 ft.	3 m
SUMMER FREEBOARD	2 ft.	1 mm
LIGHTSHIP	398 LT.	405 MT.

CAPACITIES

DRILL WATER	72,900 USG	276 m ³
FUEL	55,400 USG	210 m ³
LIQUID MUD	1,440 BBLs	229 m ³
METHANOL	862 BBLs	137 m ³
POTABLE WATER	8,900 USG	34 m ³
DEADWEIGHT	675 LT.	687 MT.

CARGO DECK

TONNAGE	450 LT.	458 MT.
STRENGTH	0.5 lbs./ft. ²	5 MT./m ²
LENGTH	122 ft.	37 m
WIDTH	28 ft.	9 m
CLEAR AREA	3,416 ft. ²	317 m ²

TONNAGE

GRT	94 US tons	486 tons
NRT	64 US tons	145 tons

MACHINERY

MAIN ENGINES	2 CAT 3508 B LS
BRAKE HORSEPOWER	1500
REDUCTION GEARS	TD MG 665-000SC
GEAR RATIO	3.21:1
PROPELLERS	HS HTB-4B 64x55
RUDDERS	Two flat plate yoked
AUXILIARY GENERATORS	2 CAT 3304T@99 kW
BOW THRUSTERS	Marprop 300 hp tunnel
LIQUID MUD CIRCULATION	Magnum 5x4x14

PERFORMANCE

MAXIMUM SPEED	12 knots	
CRUISING SPEED	10 knots	
MAXIMUM FUEL CONSUMPTION	100 USG/Hr	9 m ³ /24 Hrs
CRUISING FUEL CONSUMPTION	80 USG/Hr	7 m ³ /24 Hrs

DISCHARGE RATES

DRILL WATER	400 USG/min @ 80 ft.	91 m ³ /Hr @ 24 m
POTABLE WATER	400 USG/min @ 80 ft.	91 m ³ /Hr @ 24 m
FUEL OIL	400 USG/min @ 81 ft.	91 m ³ /Hr @ 25 m
LIQUID MUD	700 USG/min @ 150 ft.	159 m ³ /Hr @ 46 m
METHANOL	400 USG/min @ 80 ft.	91 m ³ /Hr @ 24 m

ACCOMMODATIONS

CABINS/BERTHS	6/20
OFFICERS	3
CREW	3
LOUNGE	10
MESS	10

ELECTRONICS & CONTROLS

DEPTH RECORDER	Sounder BBF1
GPS	Furuno GP37
RADAR(S)	2 x Furuno 1933 C/NT
HF RADIO	Furuno FS 1503 SSB
SSB	1X Furuno FS-1503
INTERNET E-MAIL	Globe Offshore
VHF	4 x Icom M 502
AUTOPILOT	Robertson AP-45
WEATHER RADIO	XM

SPECIAL EQUIPMENT

WINDLASS	Coastal w/ Wire Rope 1 Inches 750 ft. 25 mm 229 m
EXTERNAL FIFI	1000 GPM
NUMBER OF MONITORS	1
EEP	Equipped

DOCUMENTATION

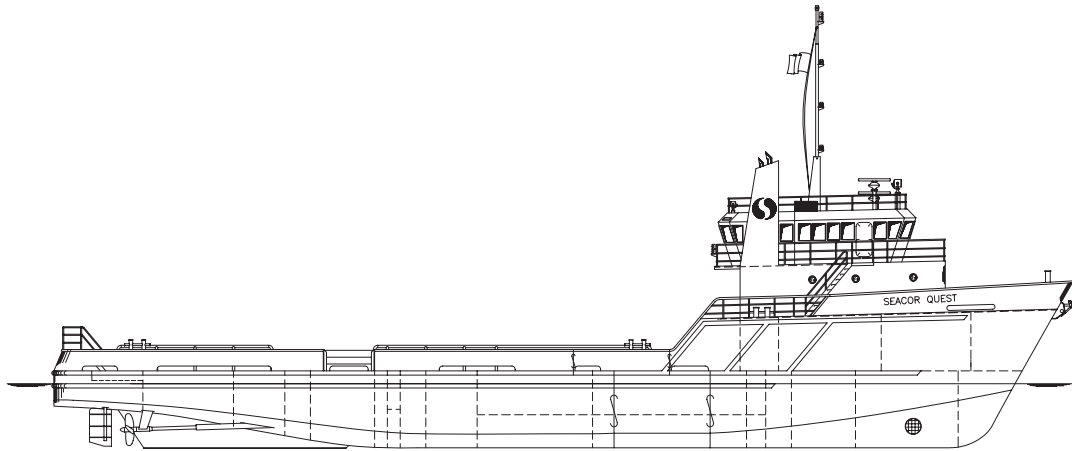
CLASS	160 FT. MS
FLAG	United States
USCG	USCG Subchapter L OSV
YEAR BUILT	2002
OFFICIAL NUMBER	1134613
BUILDER	

This specification is preliminary and subject to change without notice. Exact tank capacities, deadweight, deck cargo capacity and other figures that have been calculated and may change when the actual vessel is delivered.

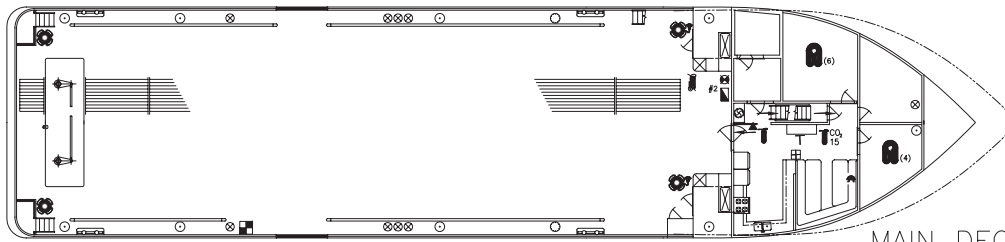
160' MINISUPPLY SEACOR QUEST



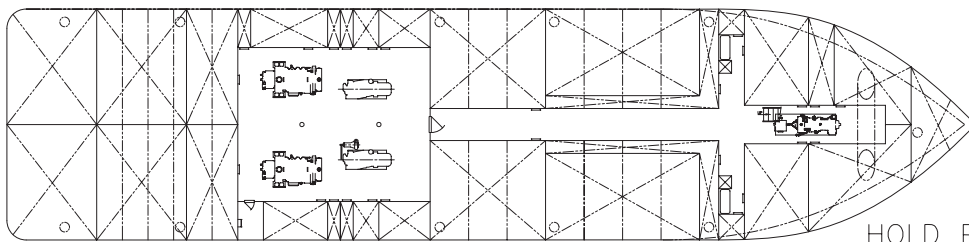
160' MINISUPPLY SEACOR QUEST



OUTBOARD PROFILE



MAIN DECK



HOLD PLAN