

# 165' MINISUPPLY CLAY ELLA



165' MINISUPPLY CLAY ELLA

## MAIN PARTICULARS

LENGTH OVERALL	167 ft.	51 m
LENGTH BP	157 ft.	48 m
BEAM	40 ft.	12 m
DEPTH	13 ft.	4 m
LIGHT DRAFT	6 ft.	2 m
LOADED DRAFT	10 ft.	3 m
SUMMER FREEBOARD	2 ft.	1 m
LIGHTSHIP	552 LT.	562 MT.

## CAPACITIES

DRILL WATER	150,000 USG	568 m <sup>3</sup>
POTABLE WATER	15,000 USG	57 m <sup>3</sup>
FUEL	47,362 USG	179 m <sup>3</sup>
LIQUID MUD	2,500 BBLS	397 m <sup>3</sup>
DRY BULK	0 ft. <sup>3</sup>	0 m <sup>3</sup>
BRINE	0 USG	0 m <sup>3</sup>
BASE OIL	0 USG	0 m <sup>3</sup>
METHANOL	1,661 BBLS	264 m <sup>3</sup>
DEADWEIGHT	860 LT.	876 MT.

## CARGO DECK

TONNAGE	620 LT.	631 MT.
STRENGTH	850 lbs./ft. <sup>2</sup>	8,300 MT./m <sup>2</sup>
LENGTH	120 ft.	37 m
WIDTH	35 ft.	11 m
CLEAR AREA	4,200 ft. <sup>2</sup>	390 m <sup>2</sup>

## TONNAGE

GRT	612 tons
NRT	224 tons

## MACHINERY

MAIN ENGINES	2 Cummins KT38M2
BRAKE HORSEPOWER	2400
REDUCTION GEARS	N/A
PROPELLERS	Controllable Pitch
RUDDERS	2 Spade Type
SHAFT GENERATORS	N/A
AUXILIARY GENERATORS	2- 99KW
EMERGENCY GENERATOR	N/A
BOW THRUSTERS	Bow & Stern Shottel
STERN THRUSTER(S)	N/A
LIQUID MUD CIRCULATION	Service pumps

## TOWING & ANCHOR HANDLING

TUGGER WINCHES	0 x 0 LT. / MT.
CAPSTANS	N/A 0 LT. / MT.

## PERFORMANCE

MAXIMUM SPEED	12 knots	
CRUISING SPEED	10 knots	
MAXIMUM FUEL CONSUMPTION	75 USG/Hr	7 m <sup>3</sup> /24 Hrs
CRUISING FUEL CONSUMPTION	65 USG/Hr	6 m <sup>3</sup> /24 Hrs

## DISCHARGE RATES

DRILL WATER	400 USG/min @ 80 ft.	91 m <sup>3</sup> /Hr @ 24 m
POTABLE WATER	400 USG/min @ 80 ft.	91 m <sup>3</sup> /Hr @ 24 m
FUEL	400 USG/min @ 80 ft.	91 m <sup>3</sup> /Hr @ 24 m
LIQUID MUD	700 USG/min @ 150 ft.	159 m <sup>3</sup> /Hr @ 46 m
DRY BULK	0 ft. <sup>3</sup> /Hr @ 0 PSI	0 m <sup>3</sup> /Hr @ 0 bar
BRINE	0 USG/min @ 0 ft.	0 m <sup>3</sup> /Hr @ 0 m
BASE OIL	0 USG/min @ 0 ft.	0 m <sup>3</sup> /Hr @ 0 m
METHANOL	400 USG/min @ 80 ft.	91 m <sup>3</sup> /Hr @ 24 m

## ACCOMMODATIONS

CABINS/BERTHS	5 / 20
OFFICERS	2
CREW	1
VIP	1
PASSENGERS	1
LOUNGE	10
MESS	10

## ELECTRONICS & CONTROLS

JOYSTICK	N/A
DEPTH SOUNDER	1 Datamarine
DYNAMIC POSITIONING	1 Kongsberg Simrad
GPS	1
GYRO	N/A
RADAR(S)	2 Furuno
RADIO SYSTEM	1
SSB	1
VHF	2
INTERNET E-MAIL	Globe Wireless
WEATHER RADIO	XM

## SPECIAL EQUIPMENT

CRANE	N/A 0 LT @ 0 ft. - 0 MT @ 0 M	
EXTERNAL FIFI	3000	
SURVIVAL CRAFT	N/A	
WINDLASS	Coastal 1,200 inches 2	30,480 mm 1
RESCUE BOAT	N/A	
WATER CAPACITY	0 GPM @ 0 ft. @ 0 psi	0 M3/Hr @ 0 M. @ 0 bar
NUMBER OF MONITORS	1	
EEP	Equipped	

## DOCUMENTATION

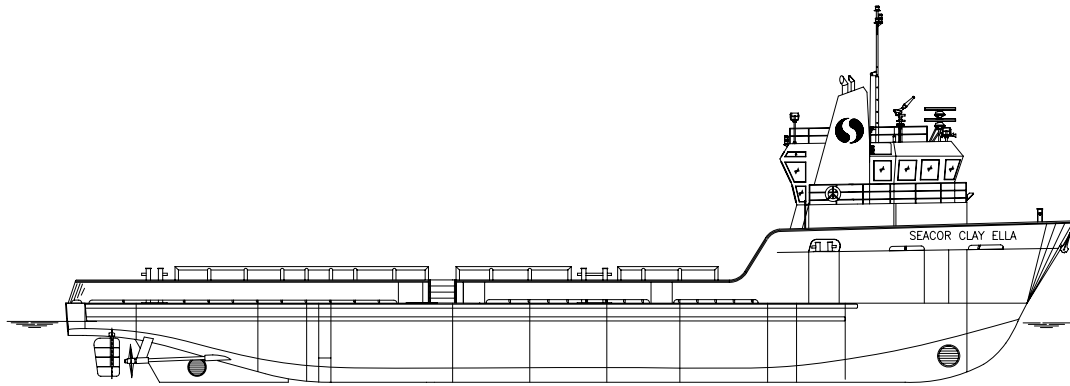
CLASS	166 FT. PSV / DP
FLAG	United States
SOLAS	N/A
USCG	USCG Sub L, OSV
YEAR BUILT	2001
OFFICIAL NUMBER	1105951
RADIO CALL SIGN	N/A
BUILDER	Bollinger Shipyard

This specification is preliminary and subject to change without notice. Exact tank capacities, deadweight, deck cargo capacity and other figures that have been calculated and may change when the actual vessel is delivered.

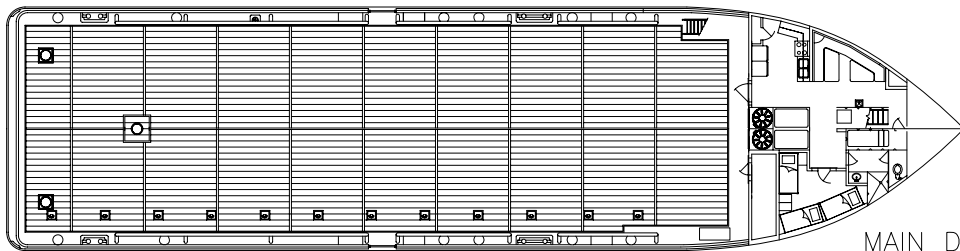
# 165' MINISUPPLY CLAY ELLA



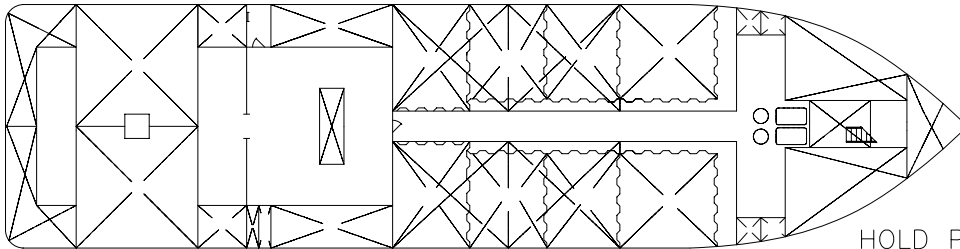
165' MINISUPPLY CLAY ELLA



OUTBOARD PROFILE



MAIN DECK



HOLD PLAN