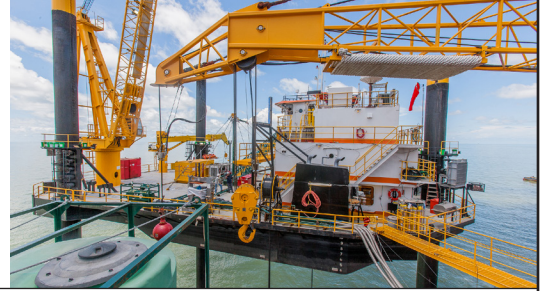


# SEACOR FUTURE CLASS 175' LIFTBOAT



## LEG

NUMBER OF LEGS	3
LEG LENGTH	175 ft.
LEG DIAMETER	54 in.
LEG WALL	0.75 in.
LEG TOWER HEIGHT	14 ft.
TRIANGLE	56 P/S x 88 AFT

## HULL

LENGTH	113 ft.
LENGTH (BARGE ONLY)	110 ft. 3 in.
BEAM	70 ft.
BEAM (BARGE ONLY)	69 ft. 6 in.
HULL DEPTH	9 ft.
DESIGN DRAFT	6.76 ft.
REGISTERED TONNAGE	173 t / 139 t
INTERNATIONAL TONNAGE	440 t / 123 t

## PAD

PAD LENGTH	26 ft.
PAD WIDTH	14 ft.
PAD DEPTH	2 ft.
PAD LOADING	N/A
DECK LOADING	N/A
	Raked at both ends

## CRANE

	PORT	STARBOARD
MAKE	Ram	EBI
MODEL		
LOAD RATINGS	100T@30 ft. 200,000 lbs.	26T@10 ft. 52,000 lbs.
BOOM TYPE	Fixed	Telescoping
BOOM LENGTH	100 ft.	40-70 ft.
CRANE INST. TYPE		
HEELPIN ABOVE DECK	14 ft.	13 ft.

## PROPULSION

	PORT	STARBOARD
MAINS - MAKE	CAT	CAT
MAINS - MODEL	3412	3412
HORSEPOWER	873	873
BOW THRUSTER EQUIPPED	NO	
CLUTCH MAKE/REDUCTION		
4 FT. REDUCTION GEARS	Twin Disc MG 516	

## DECK

TOTAL DECK AREA	5,074 ft <sup>2</sup>
USABLE DECK AREA	2,850 ft <sup>2</sup> (53.8 x 66)
MAXIMUM USABLE LEG EXTENDED	335,000 lbs.
VARIABLE DECKLOAD	579,000 lbs. w/ 15 ft. of reserve leg above the tower

## GENERATORS

GENERATOR ENGINE MAKE	Isuzu	
GENERATOR ENGINE MODEL		
GENERATOR OUTPUT	99 kw	
AUX GENSET EQUIPPED	N/A	Output :

## CAPACITIES

DIESEL FUEL	8,547 USG
LUBE OIL	160 USG
POTABLE WATER	13,625 USG
WATERMAKER EQUIPPED	N/A

## ELECTRONIC AIDS & COMMUNICATIONS

COMPASS	FULLY EQUIPPED
GPS/DGPS	FULLY EQUIPPED
RADAR(S)	FULLY EQUIPPED
FATHOMETER	FULLY EQUIPPED
LOUDHAILER	FULLY EQUIPPED
SATELLITE PHONE	FULLY EQUIPPED
PRIVATE FREQ. RADIOTELEPHONE	N/A
VHF RADIO	FULLY EQUIPPED
SINGLE SIDEBAND RADIO	FULLY EQUIPPED
GMDSS	N/A

## PERSONNEL ACCOMMODATIONS

TOTAL ACCOMMODATIONS	31
VIP ACCOMMODATIONS	1
CREW ACCOMMODATIONS	8
CONTRACTOR ACCOMMODATIONS	22
TRANSIT PASSENGERS	31
GALLEY & DINING	FULLY EQUIPPED
TV LOUNGE	FULLY EQUIPPED
LAUNDRY FACILITY	FULLY EQUIPPED
AIR CONDITION / HEATER	Standard Electrical Commercial Units
HELIPORT	N/A

## PERFORMANCE

ESTIMATED SPEED	6 knots
MAX SEPARATION, PAD TO DECK	161 ft.
MAX WORKING WATER DEPTH	128 ft.
MIN WORKING WATER DEPTH	10 ft.
MAX JACKING SOFT BOTTOM	5 ft.
SEA STATES HARD BOTTOM	5 ft.

## DOCUMENTATION

CLASS	
FLAG/PORT OF REGISTRY	USA / New Orleans, LA
SOLAS	
USCG	INSPECTED
OFFICIAL NUMBER	1212034
IMO	8770376
CALL SIGN	WDG 3602
VESSEL DELIVERY DATE	2008
BUILDER	HALIMAR SY, LLC/MIF
ZERO DISCHARGE CAPABLE	YES
ZERO DISCHARGE READY	NO

This specification is preliminary and subject to change without notice. Exact tank capacities, deadweight, deck cargo capacity and other figures that have been calculated and may change when the actual vessel is delivered.

# SEACOR FUTURE CLASS 175' LIFTBOAT

MODEL - RAM 100 TON / BOW TO C/L CRANE: 12 FT.  
PORT CRANE 100 FOOT BOOM

CRANE			
RADIUS IN FEET	BOOM ANGLE	STATIC RATING (x 1000 LBS.)	DYNAMIC RATING (x 1000 LBS.)
23	81	200.000	133.333
25	80	200.000	133.333
30	77	200.000	133.333
35	74	175.210	116.807
40	71	151.970	101.313
45	68	133.900	89.267
50	65	119.440	79.627
55	62	107.600	71.733
60	58	97.740	65.160
65	55	89.400	59.600
70	51	82.240	54.827
75	47	76.050	50.700
80	43	70.610	47.073
85	39	65.820	43.880
90	34	61.560	41.040
95	28	57.740	38.493
100	21	54.300	36.200
105	9	49.000	32.667
106	0	45.000	30.000

### BASIS OF RATING

1. STATIC RATING ARE FOR LIFTING AND LANDING LOADS ON THE PLATFORM
2. DYNAMIC RATING ARE FOR LIFTING AND LANDING LOADS ON A FLOATING VESSEL
3. RATING DOES NOT INCLUDE WEIGHT ON HOOK BLOCK, OVERHAUL BALL, SLINGS AND RIGGING
4. LOAD CHART RADIUS FROM CENTER OF ROTATION TO CENTER OF GRAVITY OF LOAD

### RIGGING

1. MAIN HOIST: EIGHT PART REEVING OF 1" WIRE ROPE ROTATION RESISTANT RIGHT REGULAR LAY WITH A MINIMUM BREAKING STRENGTH OF 127,000 LBS.
2. AUXILIARY HOIST: ONE PART REEVING OF 3/4" WIRE ROPE ROTATION RESISTANT RIGHT REGULAR LAY WITH A MINIMUM BREAKING STRENGTH OF 69,000 LBS.
3. BOOM HOIST: TEN PART REEVING OF 1" WIRE ROPE 6 X 19 EEIP IWRC (OR EQUAL) RIGHT REGULAR LAY WITH A MINIMUM BREAKING STRENGTH OF 115,000 LBS.
4. PENDANT: 2" WIRE ROPE 6 X 19 EEIP IWRC RIGHT REGULAR LAY WITH A MINIMUM BREAKING STRENGTH OF 432,000 LBS. EACH

MODEL - TECHCRANE T30-40-70

### STBD CRANE

CRANE	BOOM FULLY RETRACTED - 40'			BOOM FULLY RETRACTED - 60'			
	RADIUS IN FEET	BOOM ANGLE	DYNAMIC LOAD LINE	STATIC LOAD LINE	RADIUS IN FEET	BOOM ANGLE	DYNAMIC LOAD LINE
10	75.5	34,900	53,050	10	80	20,100	20,100
15	68.5	25,550	39,025	15	75.5	19,850	20,100
20	60	19,850	30,475	20	70.5	16,000	20,100
25	52.5	16,400	25,300	25	65.5	13,350	20,100
30	43	13,650	21,175	30	60	11,350	17,725
35	31	11,200	17,500	35	54.5	9,850	15,475
40	0	6,650	10,675	40	48.5	8,600	13,600
				45	42	7,700	12,250
				50	34	6,650	10,675
				55	25	5,600	9,100
				60	0	2,950	5,125

### BOOM FULLY RETRACTED - 40'

MAXIMUM OVERTURNING MOMENT (FT.-LBS.)	1,620,400
CORRESPONDING AXIAL FORCE (LBS.)	66,270
MAXIMUM AXIAL FORCE (LBS.)	137,380
CORRESPONDING MOMENT (FT.-LBS.)	1,163,500
BASIC CRANE WEIGHT (LBS.)	28,478

### BOOM FULLY RETRACTED - 60'

MAXIMUM OVERTURNING MOMENT (FT.-LBS.)	1,600,700
CORRESPONDING AXIAL FORCE (LBS.)	52,650
MAXIMUM AXIAL FORCE (LBS.)	92,250
CORRESPONDING MOMENT (FT.-LBS.)	1,030,300
BASIC CRANE WEIGHT (LBS.)	28,478

### BOOM EXTENDED - 50'

MAXIMUM OVERTURNING MOMENT (FT.-LBS.)	1,615,600
CORRESPONDING AXIAL FORCE (LBS.)	56,400
MAXIMUM AXIAL FORCE (LBS.)	95,100
CORRESPONDING MOMENT (FT.-LBS.)	1,085,300
BASIC CRANE WEIGHT (LBS.)	28,478

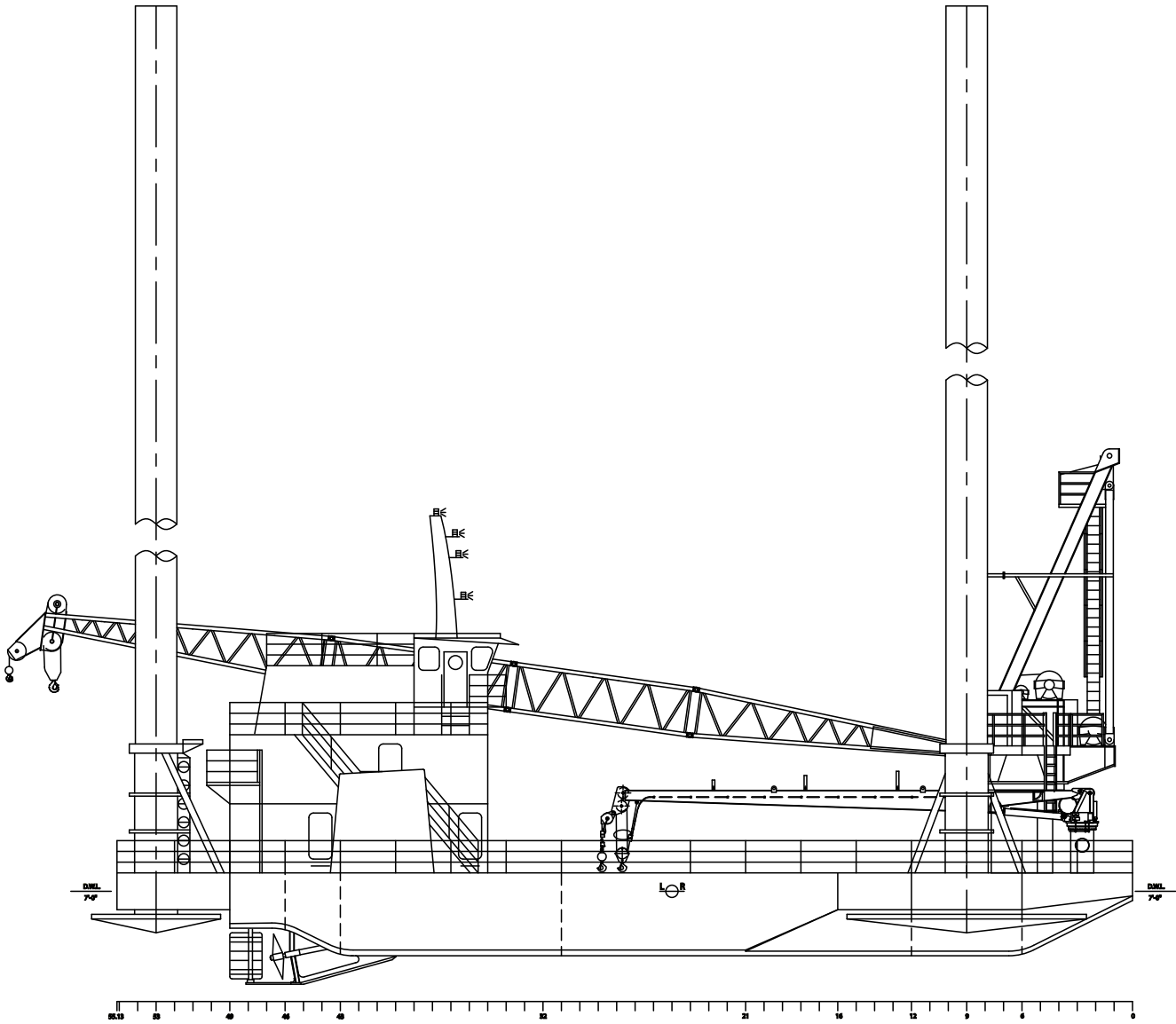
CRANE	BOOM EXTENDED - 50'			BOOM FULLY RETRACTED - 70'			
	RADIUS IN FEET	BOOM ANGLE	DYNAMIC LOAD LINE	STATIC LOAD LINE	RADIUS IN FEET	BOOM ANGLE	DYNAMIC LOAD LINE
10	78	20,300	20,300	10	81.75	20,100	20,100
15	72.5	20,300	20,300	15	77.5	16,850	20,100
20	66.5	18,900	20,300	20	73	12,100	18,850
25	60	15,350	20,300	25	69	10,050	15,775
30	53.5	12,950	20,125	30	64.5	8,400	13,300
35	46	11,000	17,200	35	60	7,100	11,350
40	37.5	9,400	14,800	40	55.5	6,200	10,000
45	27	7,900	12,550	45	50	5,250	8,575
50	0	4,500	7,450	50	44.5	4,600	7,600
				55	38.5	4,050	6,775
				60	31.5	3,600	6,100
				65	22.5	3,200	5,500
				70	0	1,800	3,400

### BOOM FULLY RETRACTED - 70'

MAXIMUM OVERTURNING MOMENT (FT.-LBS.)	1,411,700
CORRESPONDING AXIAL FORCE (LBS.)	42,290
MAXIMUM AXIAL FORCE (LBS.)	92,980
CORRESPONDING MOMENT (FT.-LBS.)	680,770
BASIC CRANE WEIGHT (LBS.)	28,478

# SEACOR FUTURE CLASS 175' LIFTBOAT

CLASS 175' LIFTBOAT SEACOR FUTURE



OUTBOARD PROFILE  
SCALE 3/16" = 1'-0"

