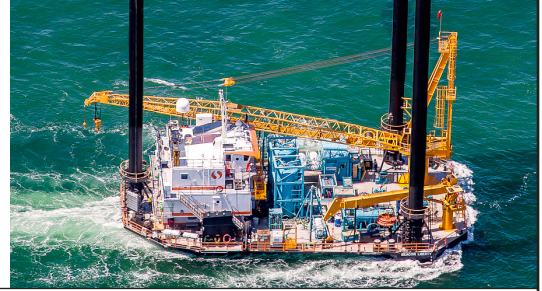


# SEACOR LIBERTY

## CLASS 175' LIFTBOAT



### LEG

NUMBER OF LEGS	3
LEG LENGTH	175 ft.
LEG DIAMETER	54 in.
LEG WALL	0.75 in.
LEG TOWER HEIGHT	14 ft.
TRIANGLE	56 P/S x 88 AFT

### HULL

LENGTH	113 ft.
LENGTH (BARGE ONLY)	110 ft. 3 in.
BEAM	70 ft.
BEAM (BARGE ONLY)	69 ft. 6 in.
HULL DEPTH	9 ft.
DESIGN DRAFT	6.76 ft.
REGISTERED TONNAGE	173 t / 139 t
INTERNATIONAL TONNAGE	440 t / 132 t

### PAD

PAD LENGTH	26 ft.
PAD WIDTH	14 ft.
PAD DEPTH	2 ft.
PAD LOADING	N/A
DECK LOADING	N/A
	Raked at both ends

### CRANE

	PORT	STARBOARD
MAKE	Ram	EBI
MODEL		
LOAD RATINGS	100T@30 ft. 200,000 lbs.	26T@10 ft. 52,000 lbs.
BOOM TYPE	Fixed	Telescoping
BOOM LENGTH	100 ft.	40-70 ft.
CRANE INST. TYPE		
HEELPIN ABOVE DECK	14 ft.	13 ft.

### PROPULSION

	PORT	STARBOARD
MAINS - MAKE	CAT	CAT
MAINS - MODEL	3412	3412
HORSEPOWER	873	873
BOW THRUSTER EQUIPPED	NO	
CLUTCH MAKE/REDUCTION		
4 FT. REDUCTION GEARS	Twin Disc MG 516	

### DECK

TOTAL DECK AREA	5,074 ft <sup>2</sup>
USABLE DECK AREA	2,850 ft <sup>2</sup> (53.8 x 66)
MAXIMUM USABLE LEG EXTENDED	335,000 lbs.
VARIABLE DECKLOAD	579,000 lbs. w/15 ft. of reserve leg above the tower

### GENERATORS

GENERATOR ENGINE MAKE	Isuzu	
GENERATOR ENGINE MODEL		
GENERATOR OUTPUT	99 kw	
AUX GENSET EQUIPPED	N/A	Output :

### CAPACITIES

DIESEL FUEL	8,547 USG
LUBE OIL	160 USG
POTABLE WATER	13,625 USG
WATERMAKER EQUIPPED	N/A

### ELECTRONIC AIDS & COMMUNICATIONS

COMPASS	FULLY EQUIPPED
GPS/DGPS	FULLY EQUIPPED
RADAR(S)	FULLY EQUIPPED
FATHOMETER	FULLY EQUIPPED
LOUDHAILER	FULLY EQUIPPED
SATELLITE PHONE	FULLY EQUIPPED
PRIVATE FREQ. RADIOTELEPHONE	N/A
VHF RADIO	FULLY EQUIPPED
SINGLE SIDEBAND RADIO	FULLY EQUIPPED
GMDSS	N/A

### PERSONNEL ACCOMMODATIONS

TOTAL ACCOMMODATIONS	31
VIP ACCOMMODATIONS	1
CREW ACCOMMODATIONS	8
CONTRACTOR ACCOMMODATIONS	22
TRANSIT PASSENGERS	31
GALLEY & DINING	FULLY EQUIPPED
TV LOUNGE	FULLY EQUIPPED
LAUNDRY FACILITY	FULLY EQUIPPED
AIR CONDITION / HEATER	Standard Electrical Commercial Units
HELIPORT	N/A

### PERFORMANCE

ESTIMATED SPEED	6 knots
MAX SEPARATION, PAD TO DECK	161 ft.
MAX WORKING WATER DEPTH	128 ft.
MIN WORKING WATER DEPTH	10 ft.
MAX JACKING SOFT BOTTOM	5 ft.
SEA STATES HARD BOTTOM	5 ft.

### DOCUMENTATION

CLASS	
FLAG/PORT OF REGISTRY	USA / New Orleans, LA
SOLAS	
USCG	INSPECTED
OFFICIAL NUMBER	1208449
IMO	8770259
CALL SIGN	WDG 3601
VESSEL DELIVERY DATE	2008
BUILDER	HALIMAR SY, LLC
ZERO DISCHARGE CAPABLE	YES
ZERO DISCHARGE READY	NO

This specification is preliminary and subject to change without notice. Exact tank capacities, deadweight, deck cargo capacity and other figures that have been calculated and may change when the actual vessel is delivered.

# SEACOR LIBERTY

## CLASS 175' LIFTBOAT

MODEL - RAM 100 TON BOW TO C/L CRANE: 12 FT.

**PORT CRANE**

CRANE	100-FOOT BOOM		
	ANGLE IN DEGREES	STATIC RATING (x 1000 LBS.)	DYNAMIC RATING (x 1000 LBS.)
23	81	200.000	133.333
25	80	200.000	133.333
30	77	200.000	133.333
35	74	175.210	116.807
40	71	151.970	101.313
45	68	133.900	89.267
50	65	119.440	79.627
55	62	107.600	71.733
60	58	97.740	65.160
65	55	89.400	59.600
70	51	82.240	54.827
75	47	76.050	50.700
80	43	70.610	47.073
85	39	65.820	43.880
90	34	61.560	41.040
95	28	57.740	38.493
100	21	54.300	36.200
105	9	49.000	32.667
106	0	45.000	30.000

**BASIS OF RATING**

1. STATIC RATING ARE FOR LIFTING AND LANDING LOADS ON THE PLATFORM
2. DYNAMIC RATING ARE FOR LIFTING AND LANDING LOADS ON A FLOATING VESSEL
3. RATING DOES NOT INCLUDE WEIGHT ON HOOK BLOCK, OVERHAUL BALL, SLINGS AND RIGGING
4. LOAD CHART RADIUS FROM CENTER OF ROTATION TO CENTER OF GRAVITY OF LOAD

**RIGGING**

1. MAIN HOIST: EIGHT PART REEVING OF 1" WIRE ROPE ROTATION RESISTANT RIGHT REGULAR LAY WITH A MINIMUM BREAKING STRENGTH OF 127,000 LBS.
2. AUXILIARY HOIST: ONE PART REEVING OF 3/4" WIRE ROPE ROTATION RESISTANT RIGHT REGULAR LAY WITH A MINIMUM BREAKING STRENGTH OF 69,000 LBS.
3. BOOM HOIST: TEN PART REEVING OF 1" WIRE ROPE 6 X 19 EEIP IWRC (OR EQUAL) RIGHT REGULAR LAY WITH A MINIMUM BREAKING STRENGTH OF 115,000 LBS.
4. PENDANT: 2" WIRE ROPE 6 X 19 EEIP IWRC RIGHT REGULAR LAY WITH A MINIMUM BREAKING STRENGTH OF 432,000 LBS. EACH

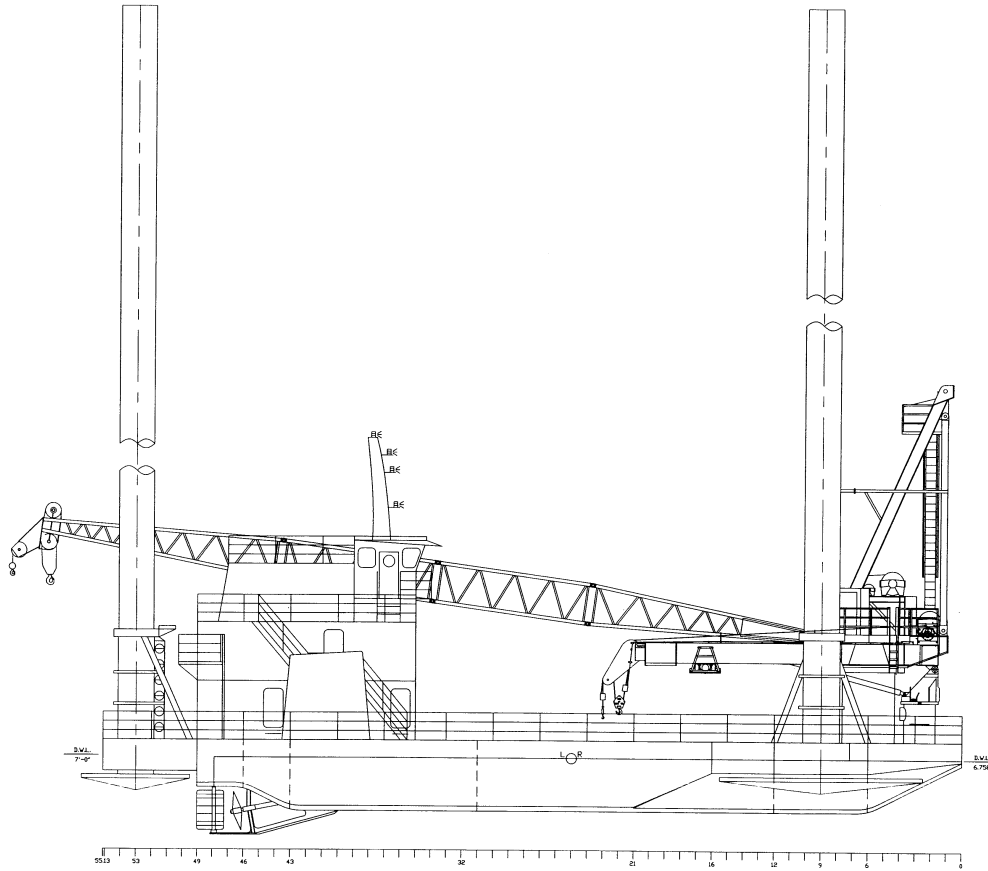
MODEL - TECHCRANE T30-40-70

**STBD**

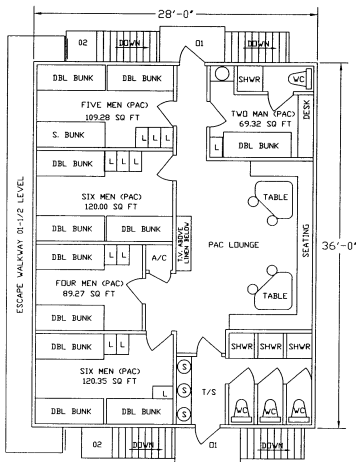
CRANE	BOOM FULLY RETRACTED - 40'			BOOM FULLY RETRACTED - 60'			BOOM EXTENDED - 50'			BOOM FULLY RETRACTED - 70'		
	BOOM ANGLE	DYNAMIC LOAD LINE	STATIC LOAD LINE	BOOM ANGLE	DYNAMIC LOAD LINE	STATIC LOAD LINE	BOOM ANGLE	DYNAMIC LOAD LINE	STATIC LOAD LINE	BOOM ANGLE	DYNAMIC LOAD LINE	STATIC LOAD LINE
10	75.5	34,900	53,050	80	20,100	20,100	78	20,300	20,300	81.75	20,100	20,100
15	68.5	25,550	39,025	75.5	19,850	20,100	72.5	20,300	20,300	77.5	16,850	20,100
20	60	19,850	30,475	70.5	16,000	20,100	66.5	18,900	20,300	73	12,100	18,850
25	52.5	16,400	25,300	65.5	13,350	20,100	60	15,350	20,300	69	10,050	15,775
30	43	13,650	21,175	60	11,350	17,725	53.5	12,950	20,125	64.5	8,400	13,300
35	31	11,200	17,500	54.5	9,850	15,475	46	11,000	17,200	60	7,100	11,350
40	0	6,650	10,675	48.5	8,600	13,600	37.5	9,400	14,800	55.5	6,200	10,000
45				42	7,700	12,250	27	7,900	12,550	50	5,250	8,575
50				34	6,650	10,675	0	4,500	7,450	44.5	4,600	7,600
55				25	5,600	9,100				38.5	4,050	6,775
60				0	2,950	5,125				31.5	3,600	6,100
65										22.5	3,200	5,500
70										0	1,800	3,400
	MAXIMUM OVERTURNING MOMENT (FT.-LBS.) 1,620,400			MAXIMUM OVERTURNING MOMENT (FT.-LBS.) 1,600,700			MAXIMUM OVERTURNING MOMENT (FT.-LBS.) 1,615,600			MAXIMUM OVERTURNING MOMENT (FT.-LBS.) 1,411,700		
	CORRESPONDING AXIAL FORCE (LBS.) 66,270			CORRESPONDING AXIAL FORCE (LBS.) 52,650			CORRESPONDING AXIAL FORCE (LBS.) 56,400			CORRESPONDING AXIAL FORCE (LBS.) 42,290		
	MAXIMUM AXIAL FORCE (LBS.) 137,380			MAXIMUM AXIAL FORCE (LBS.) 92,250			MAXIMUM AXIAL FORCE (LBS.) 95,100			MAXIMUM AXIAL FORCE (LBS.) 92,980		
	CORRESPONDING MOMENT (FT.-LBS.) 1,163,500			CORRESPONDING MOMENT (FT.-LBS.) 1,030,300			CORRESPONDING MOMENT (FT.-LBS.) 1,085,300			CORRESPONDING MOMENT (FT.-LBS.) 680,770		
	BASIC CRANE WEIGHT (LBS.) 28,478			BASIC CRANE WEIGHT (LBS.) 28,478			BASIC CRANE WEIGHT (LBS.) 28,478			BASIC CRANE WEIGHT (LBS.) 28,478		

# SEACOR LIBERTY CLASS 175' LIFTBOAT

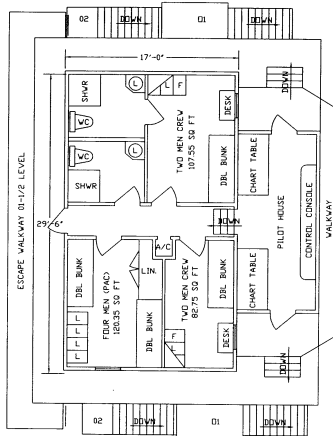
CLASS 175' LIFTBOAT SEACOR LIBERTY



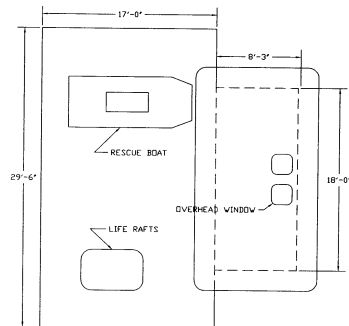
OUTBOARD PROFILE  
SCALE 3/16" = 1'-0"



GENERAL ARRANGEMENT 01 LEVEL  
SCALE 1/4" = 1'-0"



GENERAL ARRANGEMENT 02 LEVEL  
SCALE 1/4" = 1'-0"



GENERAL ARRANGEMENT 03 LEVEL  
SCALE 1/4" = 1'-0"