

SEACOR ENDEAVOR

CLASS 200' LIFTBOAT



LEG

NUMBER OF LEGS	3
LEG LENGTH	200 ft.
LEG DIAMETER	52 in
LEG WALL	1.5 in
LEG TOWER HEIGHT	18 ft.
TRIANGLE	64 P/S x 103 AFT

HULL

LENGTH	132 ft.
LENGTH (BARGE ONLY)	116.5 ft.
BEAM	77 ft.
BEAM (BARGE ONLY)	49 ft.
HULL DEPTH	10 ft.
DESIGN DRAFT	6.375 ft.
REGISTERED TONNAGE	139 t / 94 t
INTERNATIONAL TONNAGE	717 t / 215 t

PAD

PAD LENGTH	28 ft.
PAD WIDTH	14 ft.
PAD DEPTH	2.6 ft.
PAD LOADING	N/A
DECK LOADING	N/A
	Raked at both ends

CRANE

	PORT	STARBOARD
MAKE	AmClyde	EBI Cranes
MODEL	20000	TC-30
LOAD RATINGS	100 TONS	25 TONS
BOOM TYPE	Lattice	Telescoping
BOOM LENGTH	100 ft.	70 ft.
CRANE INST. TYPE	Pedestal	Pedestal
ALL PUBLISHED LOAD RATINGS ARE BASED UPON A 30 FT. RADIUS		

PROPULSION

MAINS - MAKE	Caterpillar	
MAINS - MODEL	3508	
HORSEPOWER	1,710	
BOW THRUSTER EQUIPPED	NO	
CLUTCH MAKE/REDUCTION		4.94:1

DECK

TOTAL DECK AREA	4,320 ft ²
USABLE DECK AREA	3,498 ft ² (57 x 73.6)
MAXIMUM DECKLOAD	300,000 lbs.

GENERATORS

GENERATOR ENGINE MAKE	Caterpillar	
GENERATOR ENGINE MODEL	3306	
GENERATOR OUTPUT	Two (2) 128 kw	
AUX GENSET EQUIPPED	N/A	Output :

CAPACITIES

DIESEL FUEL	10,315 USG
POTABLE WATER	18,350 USG
WATERMAKER EQUIPPED	N/A

ELECTRONIC AIDS & COMMUNICATIONS

COMPASS	FULLY EQUIPPED
GPS/DGPS	FULLY EQUIPPED
RADAR(S)	FULLY EQUIPPED
FATHOMETER	FULLY EQUIPPED
LOUDHAILER	FULLY EQUIPPED
SATELLITE PHONE	FULLY EQUIPPED
PRIVATE FREQ. RADIOTELEPHONE	N/A
VHF RADIO	FULLY EQUIPPED
SINGLE SIDEBAND RADIO	FULLY EQUIPPED
GMDSS	N/A

PERSONNEL ACCOMMODATIONS

TOTAL ACCOMMODATIONS	36
VIP ACCOMMODATIONS	2
CREW ACCOMMODATIONS	10
CONTRACTOR ACCOMMODATIONS	24
TRANSIT PASSENGERS	16
GALLEY & DINING	FULLY EQUIPPED
TV LOUNGE	FULLY EQUIPPED
LAUNDRY FACILITY	FULLY EQUIPPED
AIR CONDITION / HEATER	Standard Electrical Commercial Units
HELIPORT	N/A

PERFORMANCE

ESTIMATED SPEED	6 mph / 5.21 knots
MAX SEPARATION, PAD TO DECK	182 ft.
MAX WORKING WATER DEPTH	145 ft.
MIN WORKING WATER DEPTH	10 ft.
MAX JACKING SOFT BOTTOM	5 ft.
SEA STATES HARD BOTTOM	4 ft.

DOCUMENTATION

CLASS	ABS
FLAG/PORT OF REGISTRY	USA / New Orleans, LA
SOLAS	
USCG	INSPECTED
OFFICIAL NUMBER	1060683
IMO	8766038
CALL SIGN	WDG 3588
VESSEL DELIVERY DATE	1998
BUILDER	BOLLINGER SHIPYARD
ZERO DISCHARGE CAPABLE	YES
ZERO DISCHARGE READY	NO

This specification is preliminary and subject to change without notice. Exact tank capacities, deadweight, deck cargo capacity and other figures that have been calculated and may change when the actual vessel is delivered.

SEACOR ENDEAVOR

CLASS 200' LIFTBOAT

MODEL - AMCLYDE 20000 100 FOOT BOOM / BOOM CABLE 7/8 X 1010 FT. • 6 X 25

PORT CRANE

CRANE	ANGLE IN DEGREES	RADIUS IN FEET	4-PARTS OF LINE		6-PARTS OF LINE		8-PARTS OF LINE	
			STATIC	DYNAMIC	STATIC	DYNAMIC	STATIC	DYNAMIC
79	25		100,000	100,000	150,000	133,000	200,000	133,000
76	30		100,000	100,000	150,000	127,000	200,000	127,000
73	35		100,000	100,000	150,000	108,000	165,000	108,000
70	40		100,000	93,000	142,000	93,000	142,000	93,000
67	45		100,000	81,000	125,000	81,000	125,000	81,000
64	50		100,000	72,000	110,000	72,000	110,000	72,000
61	55		99,000	64,000	99,000	64,000	99,000	64,000
58	60		90,000	58,000	90,000	58,000	90,000	58,000
54	65		82,000	53,000	82,000	53,000	82,000	53,000
50	70		76,000	48,000	76,000	48,000	76,000	48,000
47	75		70,000	45,000	70,000	45,000	70,000	45,000
42	80		65,000	41,000	65,000	41,000	65,000	41,000
38	85		60,000	38,000	60,000	38,000	60,000	38,000
33	90		57,000	36,000	57,000	36,000	57,000	36,000
27	95		53,000	33,000	53,000	33,000	53,000	33,000
20	100		50,000	31,000	50,000	31,000	50,000	31,000
8	105		47,000	29,000	47,000	29,000	47,000	29,000
0	106		46,000	29,000	46,000	29,000	46,000	29,000

HEELPIN 7 FT. FROM BOW AND 11 FT. 8.5 IN. ABOVE DECK

MODEL - EBI CRANE TC30-40-70

STBD API LOAD CHART

CRANE	RETRACTED 40 FT MAX REACH					EXTENDED 50 FT MAX REACH				
	RADIUS IN FEET	BOOM ANGLE	LOAD LINE LBS		FAST LINE LBS		BOOM ANGLE	LOAD LINE LBS		FAST LINE LBS
STATIC			DYNAMIC	STATIC	DYNAMIC	STATIC		DYNAMIC	STATIC	DYNAMIC
10	76'	53,040	34,890	4,890	4,890	78'	20,290	20,290	4,890	4,890
15	69'	39,015	25,540	4,890	4,890	73'	20,290	20,290	4,890	4,890
20	61'	30,485	19,840	4,890	4,890	67'	20,290	18,890	4,890	4,890
25	53'	25,290	16,390	4,890	4,890	60'	20,290	15,340	4,890	4,890
30	43'	21,165	13,640	4,890	4,890	54'	20,115	12,960	4,890	4,890
35	31'	17,490	11,190	4,890	4,890	46'	17,190	10,990	4,890	4,890
40	0	10,665	6,640	4,890	4,890	38'	14,790	9,390	4,890	4,890
45						27'	12,540	7,890	4,890	4,890
50						0	7,440	4,490	4,890	4,890
55										
60										
65										
70										

CRANE	RETRACTED 60 FT MAX REACH					EXTENDED 570 FT MAX REACH				
	RADIUS IN FEET	BOOM ANGLE	LOAD LINE LBS		FAST LINE LBS		BOOM ANGLE	LOAD LINE LBS		FAST LINE LBS
STATIC			DYNAMIC	STATIC	DYNAMIC	STATIC		DYNAMIC	STATIC	DYNAMIC
10	80'	20,090	20,090	4,890	4,890	82'	20,090	20,090	4,890	4,890
15	76'	20,090	19,860	4,890	4,890	78'	20,090	16,860	4,890	4,890
20	71'	20,090	15,990	4,890	4,890	73'	18,860	12,090	4,890	4,890
25	66'	20,090	13,310	4,890	4,890	69'	15,765	10,040	4,890	4,890
30	60'	17,715	11,340	4,890	4,890	65'	13,290	8,390	4,890	4,890
35	55'	15,465	9,860	4,890	4,890	60'	11,340	7,090	4,890	4,890
40	49'	13,590	8,590	4,890	4,890	56'	9,990	6,190	4,890	4,890
45	42'	12,240	7,960	4,890	4,890	50'	8,565	5,240	4,890	4,890
50	34'	10,665	6,640	4,890	4,890	45'	7,590	4,590	4,890	4,590
55	25'	9,090	5,590	4,890	4,890	39'	6,765	4,040	4,890	4,040
60	0	5,115	2,960	4,890	2,960	32'	6,090	3,590	4,890	3,590
65						23'	5,490	3,190	4,890	3,190
70						0	3,390	1,790	3,390	1,790

VALUES SHOWN ARE HOOK LOADS
 EBI LOAD LINE BLOCK AND HOOK
 WEIGHT IS 13,000 LBS
 EBI WHIP LINE BLOCK AND HOOK
 WEIGHT IS 110 LBS

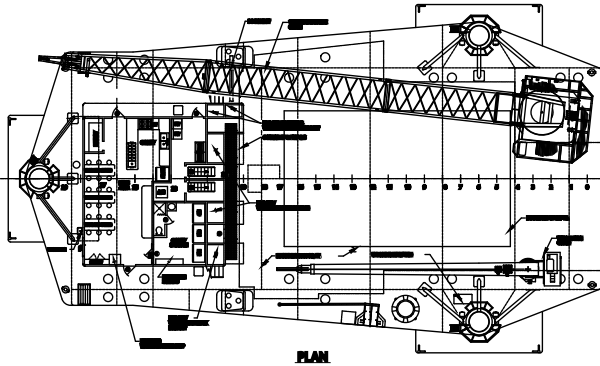
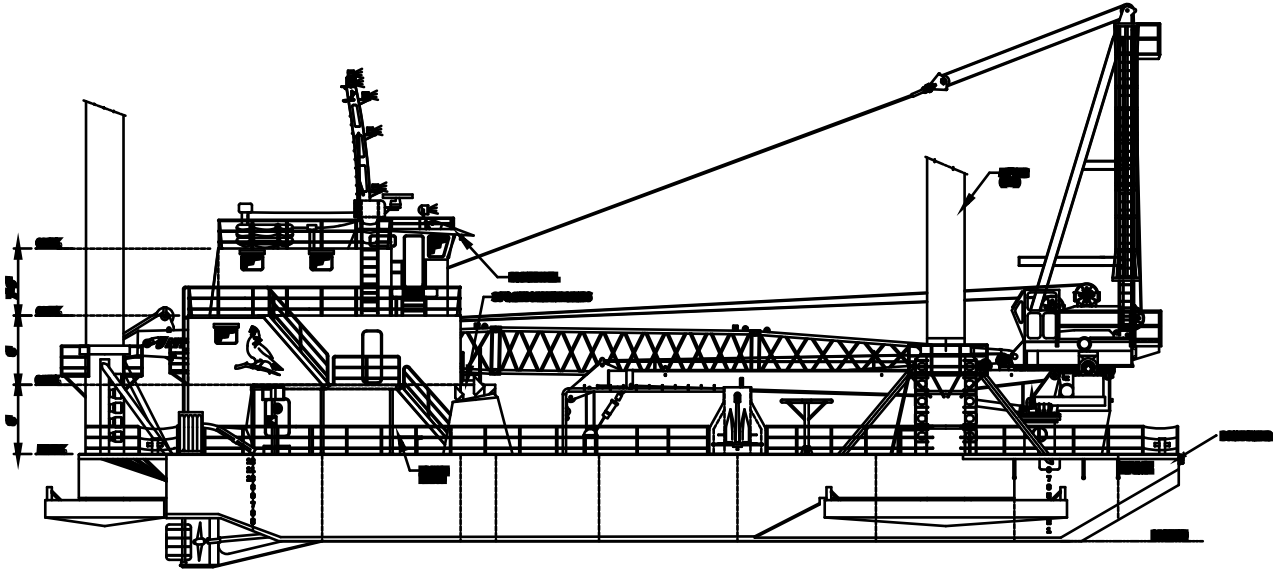
THE LOADS SHOWN ARE LESS THAN
 THE ALLOWABLES TO ACCOUNT FOR
 THE WEIGHT OF THE BLOCKS AND
 HOOKS

LOAD LINE: 4-PART LINE, 1 IN 6 X 25
 EIPS IWRC
 100,000 LB NOMINAL STRENGTH
 20,000 LB WORKING

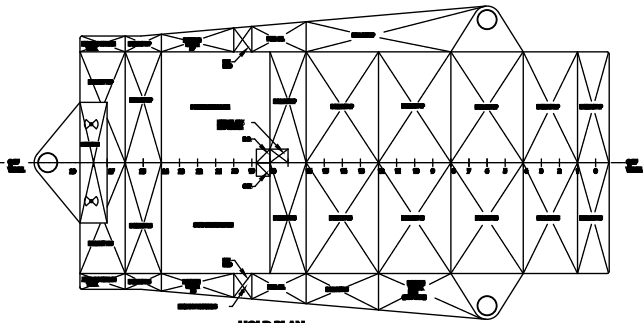
FAST LINE: 1-PART 9/16 IN 9 X 17 EIPS
 IWRC
 25,000 LB NOMINAL STRENGTH
 5,000 LB WORKING

SEACOR ENDEAVOR CLASS 200' LIFTBOAT

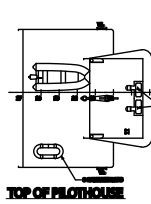
CLASS 200' LIFTBOAT SEACOR ENDEAVOR



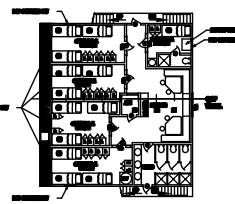
PLAN



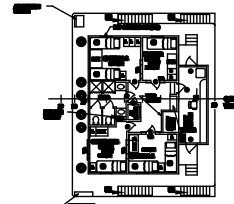
HOLD PLAN



TOP OF PILOTHOUSE



DECK LEVEL 01



DECK LEVEL 02