

# 205' PSV/DP1 SEABULK ARIZONA



205' PSV/DP1 SEABULK ARIZONA

## MAIN PARTICULARS

LENGTH OVERALL	62.50 m	205.00 ft
LENGTH BP	–	–
BEAM	14.02 m	46.00 ft
DEPTH	5.18 m	17.00 ft
DRAFT	4.54	14.5 ft
DRAFT @ SUMMER LWL	4.31 m	14.13 ft

## CAPACITIES

DRILL WATER	594.70 m <sup>3</sup>	157,103.12 USG
POTABLE WATER	121.2 m <sup>3</sup>	32,017.653 USG
FUEL OIL	465.9 m <sup>3</sup>	123,077.76 USG
LIQUID MUD/BASE OIL	515.60 m <sup>3</sup>	3,244.00 bbl
DRY BULK	238.70 m <sup>3</sup>	8,425 ft <sup>3</sup>
BRINE	–	–
METHANOL	–	–
DEADWEIGHT	1,725 MT	1,698 LT

## CARGO DECK

TONNAGE	900 t	–
STRENGTH	900 t	5 tons/m <sup>2</sup>
CLEAR AREA	450 m <sup>2</sup>	4,843 ft <sup>2</sup>

## TONNAGE (ITC)

GT	1,099 MT	1,081.64 LT
NT	329 MT	323.80 LT

## MACHINERY

MAIN ENGINES	2 x CAT 3516-B, 1600 RPM
BRAKE HORSEPOWER	4200 BHP in total
REDUCTION GEARS	2 x Reintjes WAF 861
PROPELLERS	2 x F.P.P open wheel
RUDDERS	2 x Independent High - Lift
AUX. GENERATORS	2 x CAT 3304T 150 kW, 440/220V; 60Hz
SHAFT GENERATORS	–
BOW THRUSTER	1 X azimuth drop down thruster, 650 BHP
STERN THRUSTER(S)	–

## DECK EQUIPMENT

TUGGER WINCHES	1 x S T
CAPSTANS	–
WINDLASS	2 x 32mm, 10t Pull
ANCHORS	2 x 1600 kg
ANCHOR CHAINS	2 x 38mm 247.5 + 220m NVK3
DECK CRANE	1 x 1.5 t at 7.35 m reach
ROLL REDUCTION SYSTEM	–

## PERFORMANCE

MAXIMUM SPEED	12 knots
SERVICE SPEED	11 knots
ECONOMICAL SPEED	10 knots
FUEL CONSUMPTION AT MAX SPEED	12.7 t/day
FUEL CONSUMPTION AT SERVICE SPEED	10.0 t/day
FUEL CONSUMPTION AT ECONOMICAL SPEED	7.0 t/day
IN PORT	.6 t/day
STANDBY AT SEA W/DP OPERATION	5.0 t/day (1.8 t/day w/out DP)

## DISCHARGE RATES

DRILL WATER	120 m <sup>3</sup> /hr @ 50 m per head
POTABLE WATER	120 m <sup>3</sup> /hr @ 50 m per head
FUEL OIL	120 m <sup>3</sup> /hr @ 50 m per head
LIQUID MUD	120 m <sup>3</sup> /hr @ 50 m per head
DRY BULK	80 m <sup>3</sup> /hr @ 80 m per head
BRINE	–
BASE OIL	100 m <sup>3</sup> /hr @ 50 m per head
METHANOL	–

## ACCOMMODATIONS

BERTHS	16 (berths in 6 cabins)	2 x 1 berth cabins
CREW MAX.	12	1 x 2 berth cabins
VIP	–	2 x 4 berth cabins
PASSENGERS	4	1 x 4 berth cabins

## ELECTRONICS & CONTROLS

JOYSTICK	1 x Kongsberg C-joy
DEPTH SOUNDER	1 x Datamarine, 1 x Saracom
DYNAMIC POSITIONING	DP1 Kongsberg C-pos
AUTOPILOT	1 x Simrad
GMDSS	A3
GMDSS PORTABLE RADIO	2 x VHF JRC
GPS	2 x Navigator
GYRO	2 x Navtex
RADAR(S)	2 x Furuno
SATCOM	Immersat C telephone, fax, e-mail facilities
SSB	1 x Icom 250 W
NAVTEX	1
VHF	2 x Icom 25 W
VHF PORTABLE	2 x Icom 5 W

## SPECIAL EQUIPMENT

EXTERNAL FIFI PUMP	1 x 230 m <sup>3</sup> /hr
MOB FAST RESCUE BOAT	1 x 9 m, 6 men, 25hp, rigid inflatable
MONITORS	1 x 1200 m <sup>2</sup> /hr, 1 x 230 m <sup>2</sup> /hr
THROW HEIGHT/LENGTH	–
SURVIVAL CRAFT	–
LIFERAFT	4 x 10 person, inflatable
RESCUE BOAT	–
RESCUE ZONE	2, one on each side

## DOCUMENTATION

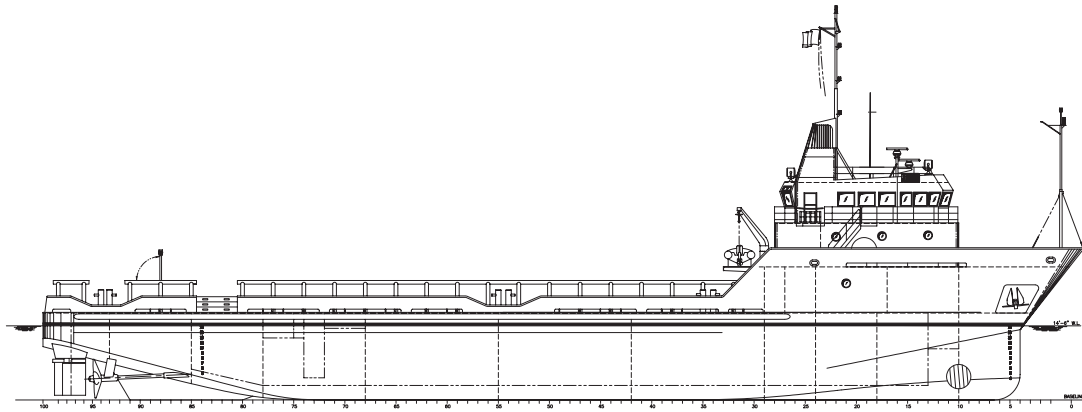
CLASS	ABS A1 AMS/DPS1
FLAG	USA / MIAMI
SOLAS	Certified
USCG	Certified
YEAR BUILT	1998
OFFICIAL NUMBER	1066216
IMO	9191096
CALL SIGN	WDE4781
BUILDER	Halter Marine Group

This specification is preliminary and subject to change without notice. Exact tank capacities, deadweight, deck cargo capacity and other figures that have been calculated and may change when the actual vessel is delivered.

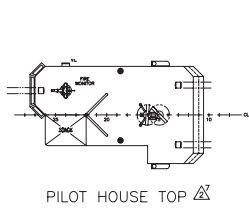
# 205' PSV/DP1 SEABULK ARIZONA



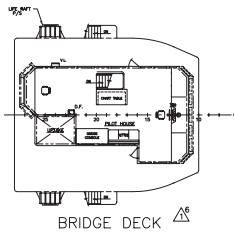
205' PSV/DP1 SEABULK ARIZONA



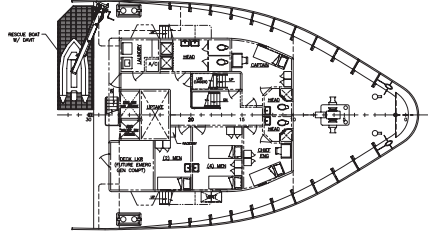
OUTBOARD PROFILE  $\Delta^7 \Delta^1 \Delta^3$



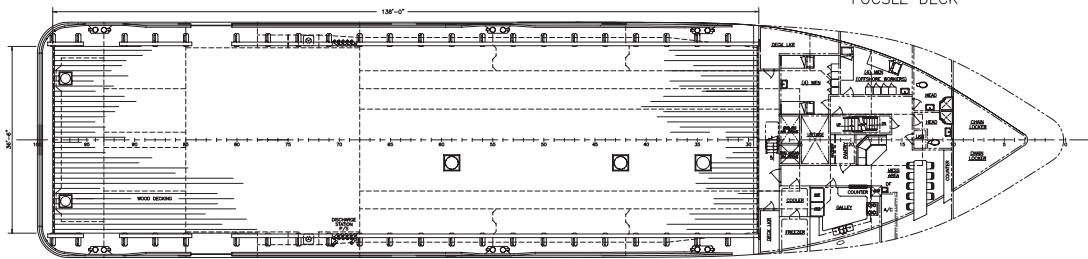
PILOT HOUSE TOP  $\Delta$



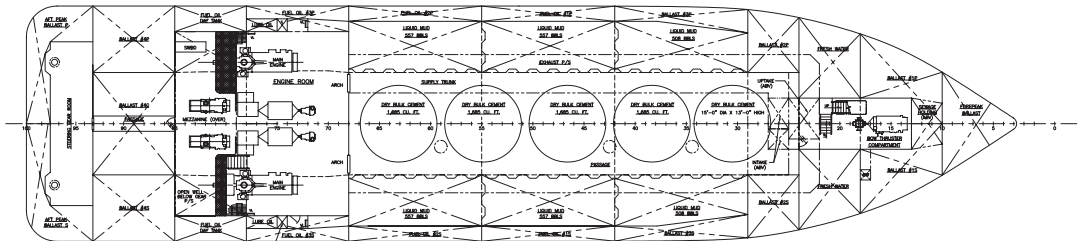
BRIDGE DECK  $\Delta^6$



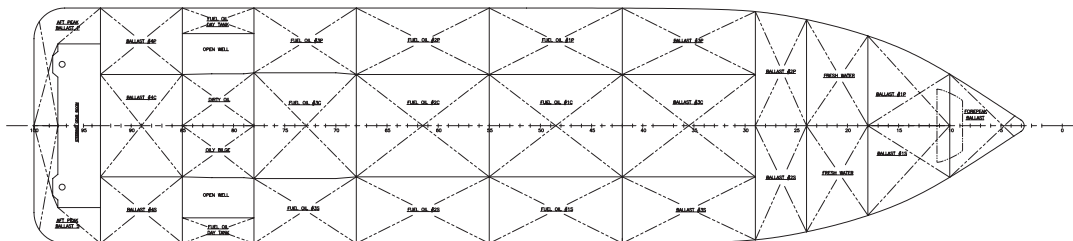
FOCSLS DECK  $\Delta^4 \Delta^5 \Delta^6$



MAIN DECK  $\Delta^3 \Delta^4$



HOLD PLAN  $\Delta^1 \Delta^3 \Delta^5 \Delta^9$



INNERBOTTOM PLAN  $\Delta^2$