

205' PSV SEABULK KANSAS



205' PSV SEABULK KANSAS

MAIN PARTICULARS

	U.S.	METRIC
LENGTH OVERALL	205 ft	62.49 m
LENGTH BP	191.2 ft	58.28 m
BEAM	46 ft	14.02 m
DEPTH	17 ft	5.18 m
LIGHT DRAFT	9 ft	2.74 m
LOADED DRAFT	14 ft 2 in	4.32 m
SUMMER FREEBOARD	2 ft 10 in	0.88 m
LIGHT SHIP	936.62 LT	951.65 MT

CAPACITIES (100%)

	U.S.	METRIC
DRILL WATER	162,758 usg	616.11 m ³
POTABLE WATER	30,142 usg	114.10 m ³
FUEL	124,971 usg	473.07 m ³
METHANOL	N/A	N/A
LIQUID MUD	3,244 bbls	515.72 m ³
DRY BULK	8,425 ft ³	238.57 m ³
BRINE	136,239 usg	515.72 m ³
BASE OIL	136,239 usg	515.72 m ³
DEAD WEIGHT	1,697.29 LT	1,724.53 MT

CARGO DECK

	U.S.	METRIC
TONNAGE	1,200 LT	1,219.26 MT
STRENGTH	540 lbs/ft ²	2.64 MT/m ²
LENGTH	120 ft	36.58 m
WIDTH	36 ft	10.97 m
CLEAR AREA	4,320 ft ²	401.34 m ²

TONNAGE

	U.S.	INT
GROSS	N/A	1,099 GT ITC
NET	N/A	329 NT ITC

MACHINERY

MAIN ENGINES	2 - Caterpillar 3516 B
BRAKE HORSEPOWER	4,200
Z DRIVES	N/A
REDUCTION GEARS	2 - Reintjes WAF861
GEAR RATIO	5,842 : 1
PROPELLERS	2 - Bird Johnson 92D x 67P
RUDDERS	2 - Becker
SHAFT GENERATORS	N/A
AUXILIARY GENERATORS	2 - 99 kw
EMERGENCY GENERATORS	N/A
BOW THRUSTERS	1 - 1,000 hp - Azmuthing
STERN THRUSTERS	N/A
LIQUID MUD CIRCULATION	2 - pumps

PERFORMANCE

MAXIMUM SPEED	12 kts
CRUISING SPEED	11 kts
MAX FUEL CONSUMPTION	172 GPH
CRUISING FUEL CONSUMPTION	138 GPH

DISCHARGE RATES

	U.S.	METRIC
DRILL WATER	600 GPM @ 150 ft	136.27 m ³ /hr @ 45.72 m
POTABLE WATER	600 GPM @ 150 ft	136.27 m ³ /hr @ 45.72 m
FUEL	600 GPM @ 150 ft	136.27 m ³ /hr @ 45.72 m
METHANOL	N/A	N/A
LIQUID MUD	1,200 GPM @ 150 ft	272.55 m ³ /hr @ 45.72 m
DRY BULK	1,000 ft ³ /hr @ 80 psi	28.32 m ³ /hr @ 5.52 bar
BRINE	1,200 GPM @ 150 ft	272.55 m ³ /hr @ 45.72 m
BASE OIL	1,200 GPM @ 150 ft	272.55 m ³ /hr @ 45.72 m

ACCOMMODATIONS

TOTAL CABINS / BERTHS	6 cabins / 16 berths
OFFICER CABINS	2 cabins / 2 x 1
CREW CABINS	1 cabin / 1 x 4
VIP CABINS	N/A
PASSENGER CABINS	3 cabins / 1 x 2 & 2 x 4
LOUNGE	N/A
MESS	Seating for 12

ELECTRONICS & CONTROLS

JOYSTICK	1 - Kongsberg Simrad
DEPTH SOUNDER	1 - Datamarine
DGPS	1 - Oceanstar, 1 - Raven
DYNAMIC POSITIONING	1 - Kongsberg Simrad CPOS, DP1
GPS	1 - Garmin
GYRO	1 - Robertson, 1 - Sperry
SSB	1 - SEA
VHF	2 - SEA, 2 - Standard Horizon
RADARS	1 - Furuno, 1 - Raytheon
RADIO SYSTEM	GMDSS
INTERNET E-MAIL	Globe Wireless
WEATHER RADIO	XM

SPECIAL EQUIPMENT

CRANE	N/A
SURVIVAL CRAFT	N/A
WINDLASS	1 - Fritz Culver - 1.25 in
RESCUE BOAT	1 - Zodiac
FIREFIGHTING	1 - @ 1,000 GPM

DOCUMENTATION

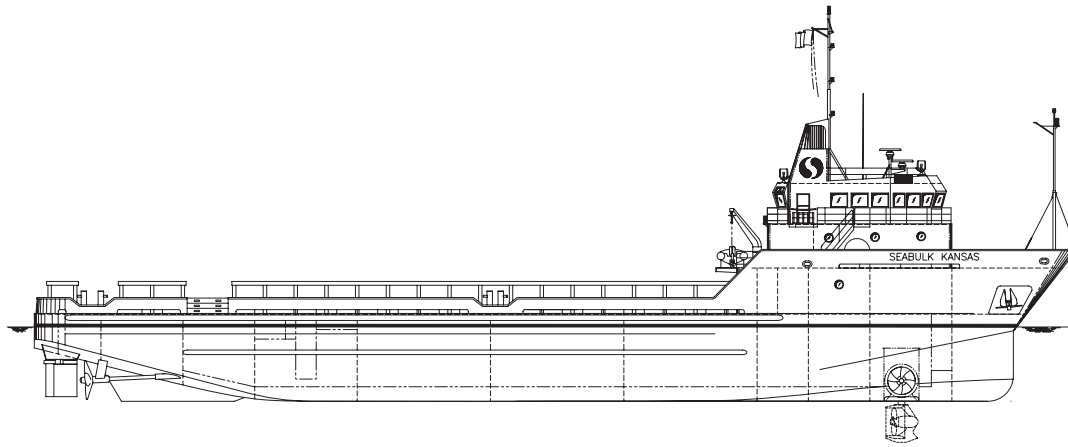
CLASS	+A1, U.S. Domestic Service, +AMS, DPS -1
FLAG	United States
SOLAS	N/A
USCG	Sub Chapter L, OSV
YEAR BUILT	1998
OFFICIAL NUMBER	1071486
RADIO CALL SIGN	WCY6961
BUILDER	Halter Marine, Inc

Information provided is for guidance purposes only and are not guaranteed. Please verify accuracy with SEACOR Marine representative(s)

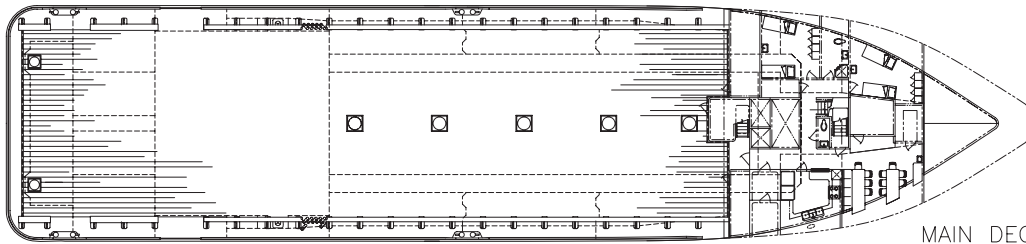
205' PSV SEABULK KANSAS



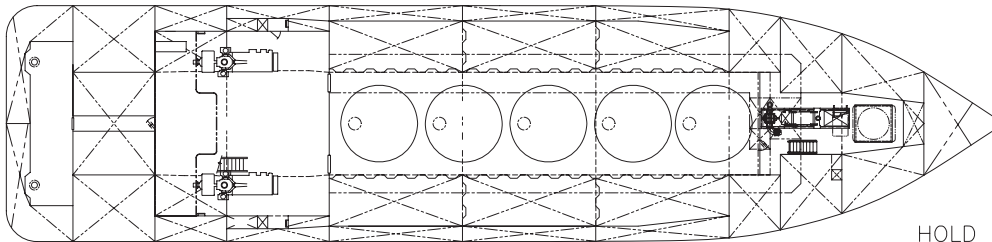
205' PSV SEABULK KANSAS



OUTBOARD PROFILE



MAIN DECK



HOLD PLAN