

205' PSV SEABULK WISCONSIN



205' PSV SEABULK WISCONSIN

MAIN PARTICULARS

LENGTH OVERALL	205 ft	62.49 m
LENGTH BP	191 ft	58.22 m
BEAM	46 ft	14.02 m
DEPTH	17 ft	5.18 m
LIGHT DRAFT	9 ft	2.74 m
LOADED DRAFT	14 ft 2 in	4.32 m
SUMMER FREEBOARD	2 ft 10 in	0.88 m
LIGHT SHIP	936.62 LT	951.65 MT

CAPACITIES (100%)

DRILL WATER	162,758 usg	616.11 m ³
POTABLE WATER	30,142 usg	114.10 m ³
FUEL	124,971 usg	473.07 m ³
METHANOL	N/A	N/A
LIQUID MUD	3,244 bbls	515.72 m ³
DRY BULK	8,425 ft ³	238.57 m ³
BRINE	136,239 usg	515.72 m ³
BASE OIL	136,239 usg	515.72 m ³
DEAD WEIGHT	1,698.01 LT	1,725.26 MT

CARGO DECK

TONNAGE	1,220 LT	1,239.58 MT
STRENGTH	540 lbs/ft ²	2.64 MT/m ²
LENGTH	120 ft	36.58 m
WIDTH	36 ft	10.97 m
CLEAR AREA	4,680 ft ²	434.78 m ²

TONNAGE

U.S.

INT

GROSS	N/A	1,099 GT ITC
NET	N/A	329 NT ITC

MACHINERY

MAIN ENGINES	2 - Caterpillar 3516 B
BRAKE HORSEPOWER	4,200
Z DRIVES	N/A
REDUCTION GEARS	2 - Reintjes WAF861
GEAR RATIO	5.842 : 1
PROPELLERS	2 - Bird Johnson 92D x 67P
RUDDERS	2 - Becker
SHAFT GENERATORS	N/A
AUXILIARY GENERATORS	2 - 105 kw
EMERGENCY GENERATORS	N/A
BOW THRUSTERS	1 - 1,000 hp - Azmuthing
STERN THRUSTERS	N/A
LIQUID MUD CIRCULATION	2 - pumps

PERFORMANCE

MAXIMUM SPEED	12 kts
CRUISING SPEED	11 kts
MAX FUEL CONSUMPTION	172 GPH
CRUISING FUEL CONSUMPTION	138 GPH

DISCHARGE RATES

DRILL WATER	600 GPM @ 150 ft	136.27 m ³ /hr @ 45.72 m
POTABLE WATER	600 GPM @ 150 ft	136.27 m ³ /hr @ 45.72 m
FUEL	600 GPM @ 150 ft	136.27 m ³ /hr @ 45.72 m
METHANOL	N/A	N/A
LIQUID MUD	1,200 GPM @ 150 ft	272.55 m ³ /hr @ 45.72 m
DRY BULK	1,000 ft ³ /hr @ 80 psi	28.32 m ³ /hr @ 5.52 bar
BRINE	1,200 GPM @ 150 ft	272.55 m ³ /hr @ 45.72 m
BASE OIL	1,200 GPM @ 150 ft	272.55 m ³ /hr @ 45.72 m

ACCOMMODATIONS

TOTAL CABINS / BERTHS	6 cabins / 16 berths
OFFICER CABINS	2 cabins / 2 x 1
CREW CABINS	1 cabin / 1 x 4
VIP CABINS	N/A
PASSENGER CABINS	3 cabins / 1 x 2 & 2 x 4
LOUNGE	N/A
MESS	Seating for 12

ELECTRONICS & CONTROLS

JOYSTICK	1 - Kongsberg Simrad
DEPTH SOUNDER	1 - Si-Tex, 1 - Echopilot
DGPS	1 - OceanStar, 1 - Raven
DYNAMIC POSITIONING	1 - Kongsberg CPOS, DP1
GPS	1 - Furuno, 1 - Navigator
GYRO	1 - Robertson, 1 - Sperry
SSB	1 - SEA
VHF	2 - SEA, 2 - Standard Horizon
RADARS	1 - Simrad, 1 - JRC
RADIO SYSTEM	GMDSS
INTERNET E-MAIL	Globe Wireless
WEATHER RADIO	XM

SPECIAL EQUIPMENT

CRANE	N/A
SURVIVAL CRAFT	N/A
WINDLASS	1 - Fritz Culver - 1.25 in
RESCUE BOAT	1 - Zodiac
FIREFIGHTING	1 - @ 1,000 GPM

DOCUMENTATION

CLASS	+A1, U.S. Domestic Service, +AMS, DPS -1
FLAG	United States
SOLAS	N/A
USCG	Sub Chapter L, OSV
YEAR BUILT	1998
OFFICIAL NUMBER	1069832
RADIO CALL SIGN	WCY6329
BUILDER	Halter Marine, Inc

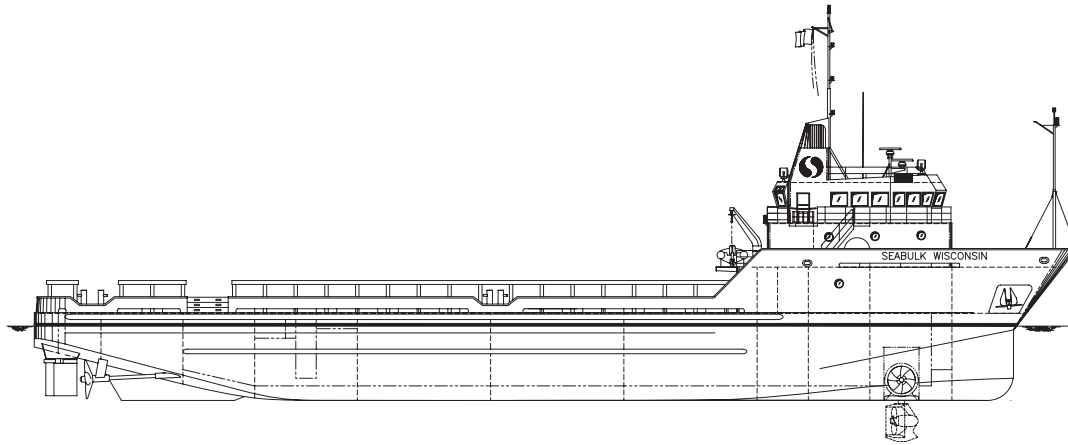
Information provided is for guidance purposes only and are not guaranteed. Please verify accuracy with SEACOR Marine representative(s)

r041311

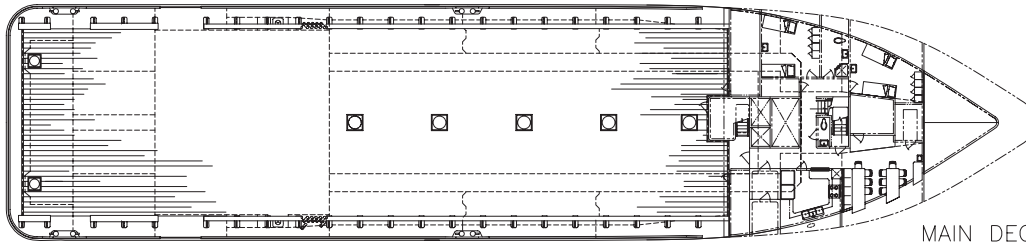
205' PSV SEABULK WISCONSIN



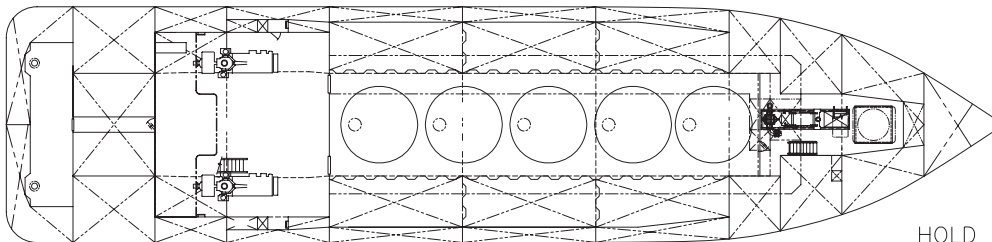
205' PSV SEABULK WISCONSIN



OUTBOARD PROFILE



MAIN DECK



HOLD PLAN