

205' PSV SEACOR CONQUEST



205' PSV SEACOR CONQUEST

MAIN PARTICULARS

| | U.S. | METRIC |
|------------------|-------------|-----------|
| LENGTH OVERALL | 205 ft | 62.49 m |
| LENGTH BP | 191 ft 2 in | 58.27 m |
| BEAM | 46 ft | 14.02 m |
| DEPTH | 17 ft | 5.18 m |
| LIGHT DRAFT | 9 ft | 2.74 m |
| LOADED DRAFT | 14 ft 2 in | 4.32 m |
| SUMMER FREEBOARD | 2 ft 10 in | 0.88 m |
| LIGHT SHIP | 945.44 LT | 960.61 MT |

CAPACITIES (100%)

| | U.S. | METRIC |
|---------------|-----------------------|-----------------------|
| DRILL WATER | 162,758 usg | 616.11 m ³ |
| POTABLE WATER | 30,142 usg | 114.10 m ³ |
| FUEL | 124,500 usg | 471.28 m ³ |
| METHANOL | N/A | N/A |
| LIQUID MUD | 3,245 bbls | 515.91 m ³ |
| DRY BULK | 6,900 ft ³ | 195.39 m ³ |
| BRINE | 136,290 usg | 515.91 m ³ |
| BASE OIL | 136,290 usg | 515.91 m ³ |
| DEAD WEIGHT | 1,690 LT | 1,717.12 MT |

CARGO DECK

| | U.S. | METRIC |
|------------|-------------------------|------------------------|
| TONNAGE | 835 LT | 848.40 MT |
| STRENGTH | 540 lbs/ft ² | 2.64 MT/m ² |
| LENGTH | 120 ft | 36.58 m |
| WIDTH | 36 ft | 10.97 m |
| CLEAR AREA | 4,320 ft ² | 401.34 m ² |

TONNAGE

| | U.S. | INT |
|-------|------|--------------|
| GROSS | N/A | 1,099 GT ITC |
| NET | N/A | 329 NT ITC |

MACHINERY

| | |
|------------------------|----------------------------|
| MAIN ENGINES | 2 - Caterpillar 3516 B |
| BRAKE HORSEPOWER | 4,200 |
| Z DRIVES | N/A |
| REDUCTION GEARS | 2 - Reintjes WAF861 |
| GEAR RATIO | 5.842:1 |
| PROPELLERS | 2 - Bird Johnson 92D x 67P |
| RUDDERS | 2 - Becker |
| SHAFT GENERATORS | N/A |
| AUXILIARY GENERATORS | 2 - 105 kw |
| EMERGENCY GENERATORS | N/A |
| BOW THRUSTERS | 1 - 1,000 hp - Azmuthing |
| STERN THRUSTERS | N/A |
| LIQUID MUD CIRCULATION | 2 - pumps |

PERFORMANCE

| | |
|---------------------------|---------|
| MAXIMUM SPEED | 12 kts |
| CRUISING SPEED | 11 kts |
| MAX FUEL CONSUMPTION | 172 GPH |
| CRUISING FUEL CONSUMPTION | 138 GPH |

DISCHARGE RATES

| | U.S. | METRIC |
|---------------|------------------------------------|-------------------------------------|
| DRILL WATER | 600 GPM @ 150 ft | 136.27 m ³ /hr @ 45.72 m |
| POTABLE WATER | 600 GPM @ 150 ft | 136.27 m ³ /hr @ 45.72 m |
| FUEL | 600 GPM @ 150 ft | 136.27 m ³ /hr @ 45.72 m |
| METHANOL | N/A | N/A |
| LIQUID MUD | 1,200 GPM @ 150 ft | 272.55 m ³ /hr @ 45.72 m |
| DRY BULK | 1,000 ft ³ /hr @ 80 psi | 28.32 m ³ /hr @ 5.52 bar |
| BRINE | 1,200 GPM @ 150 ft | 272.55 m ³ /hr @ 45.72 m |
| BASE OIL | 1,200 GPM @ 150 ft | 272.55 m ³ /hr @ 45.72 m |

ACCOMMODATIONS

| | |
|-----------------------|--------------------------|
| TOTAL CABINS / BERTHS | 6 cabins / 16 berths |
| OFFICER CABINS | 2 cabins / 2 x 1 |
| CREW CABINS | 1 cabin / 1 x 4 |
| VIP CABINS | N/A |
| PASSENGER CABINS | 3 cabins / 1 x 2 & 2 x 4 |
| LOUNGE | N/A |
| MESS | Seating for 12 |

ELECTRONICS & CONTROLS

| | |
|---------------------|------------------------------|
| JOYSTICK | 1 - Kongsberg Simrad |
| DEPTH SOUNDER | 1 - Data Marine |
| DGPS | 1 - Raytheon, 1 - Ocean Star |
| DYNAMIC POSITIONING | 1 - Kongsberg Simrad, DPO |
| GPS | N/A |
| GYRO | 1 - Robertson |
| SSB | 1 - SEA |
| VHF | 2 - SEA |
| RADARS | 2 - Raytheon |
| RADIO SYSTEM | Seator |
| INTERNET E-MAIL | Globe Wireless |
| WEATHER RADIO | XM |

SPECIAL EQUIPMENT

| | |
|----------------|-----------------------|
| CRANE | N/A |
| SURVIVAL CRAFT | N/A |
| WINDLASS | 1 - McElroy - 1.25 in |
| RESCUE BOAT | 1 - Zodiac |
| FIREFIGHTING | 1 - @ 1,000 GPM |

DOCUMENTATION

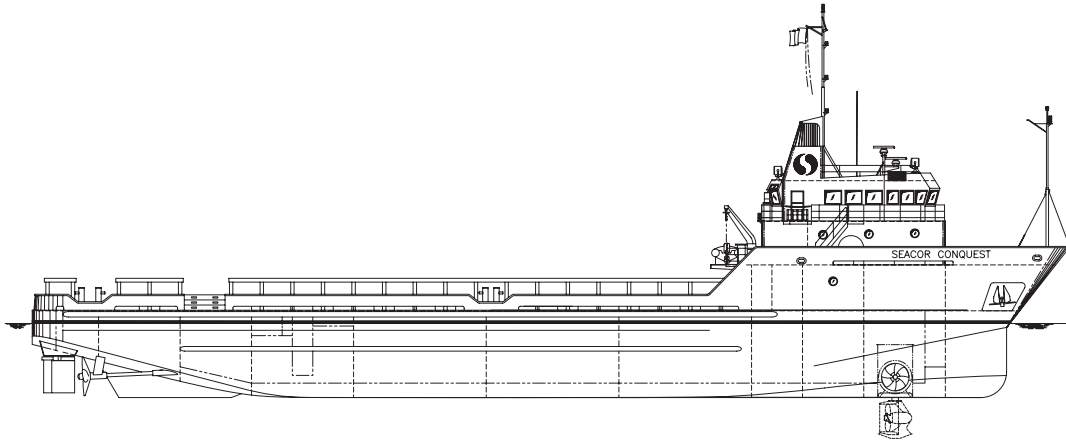
| | |
|-----------------|----------------------------------|
| CLASS | +A1, U.S. Domestic Service, +AMS |
| FLAG | United States |
| SOLAS | N/A |
| USCG | Sub Chapter L, OSV |
| YEAR BUILT | 1999 |
| OFFICIAL NUMBER | 1082888 |
| RADIO CALL SIGN | WDA9650 |
| BUILDER | Halter Marine, Inc |

Information provided is for guidance purposes only and are not guaranteed. Please verify accuracy with SEACOR Marine representative(s)

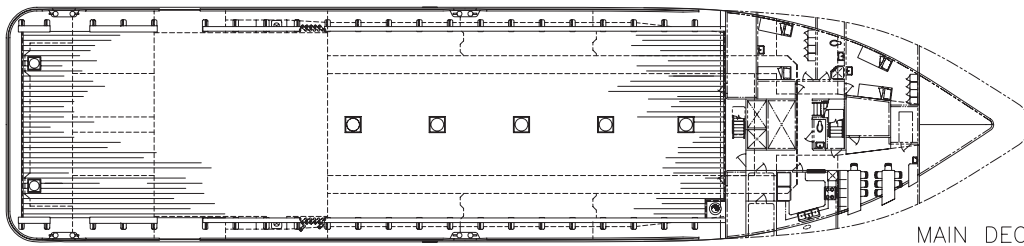
205' PSV SEACOR CONQUEST



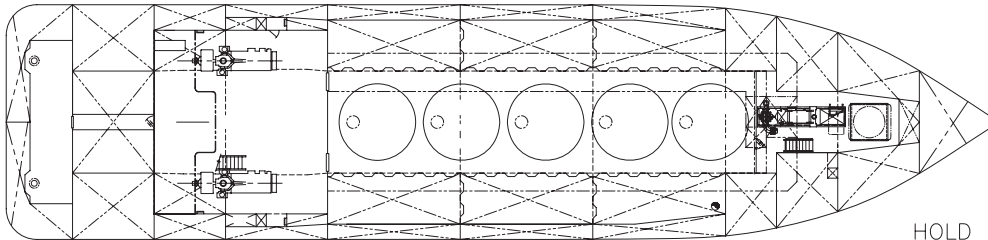
205' PSV SEACOR CONQUEST



OUTBOARD PROFILE



MAIN DECK



HOLD PLAN