

217' PSV SEACOR PRIDE



217' PSV SEACOR PRIDE

MAIN PARTICULARS

LENGTH OVERALL	217 ft	66.14 m
LENGTH BP	211 ft	64.31 m
BEAM	46 ft	14.02 m
DEPTH	17 ft	5.18 m
LIGHT DRAFT	6 ft	1.83 m
LOADED DRAFT	14 ft	4.27 m
SUMMER FREEBOARD	3 ft	0.91 m
LIGHTSHIP	1,075 T	1,092.2 t
DEADWEIGHT	1,883 T	1,913.51 t
GRT	1,243	
NRT	413	

CARGO DECK

TONNAGE	1,400 T	406.42 t
STRENGTH	540 lbs/ft ²	2064 t/m ²
LENGTH	144 ft	43.89 m
WIDTH	36.6 ft	11.15 m
CLEAR AREA	5,250 ft ²	487.74 m ²

DECK EQUIPMENT

TUGGER WINCHES	30 T
----------------	------

MACHINERY

MAIN ENGINES	2 - CAT 3516B
AUXILIARY GENERATORS	2 - CAT 170 KW
EMERGENCY GENERATOR	1 - CAT 99 KW
TOTAL INSTALLED POWER	4000 BHP
PROPELLERS	84.21" dia. 2.2 m dia.
AZIMUTHING THRUSTERS	2 - Steerprop 2000 HP
BOW THRUSTERS	1 - BRUNVOLL Tunnel 1,000 HP CPP
WINDLASS	1 - Edgewater Machine - 1.25 in
ANCHOR / CHAIN	2 - 3000 lb. Danforth X 10 Shots ea. 1.25 in. chain

PERFORMANCE

MAXIMUM SPEED	13 kts	
CRUISING SPEED	11 kts	
MAXIMUM FUEL CONSUMPTION	210 USG/Hr	0.79 m ³ /hr
CRUISING FUEL CONSUMPTION	108 USG/Hr	0.40 m ³ /hr

CAPACITIES

DRILL WATER	141,799 USG	m ³
POTABLE WATER	34,660 USG	m ³
FUEL	152,576 USG	m ³
LIQUID MUD	5,165 bbls	m ³
DRY BULK	6,740 ft ³	m ³
BRINE	216,930 USG	m ³
BASE OIL	216,930 USG	m ³

DISCHARGE RATES

DRILL WATER	600 GPM @ 150 ft	136.27m ³ /hr @ 45.72 m
POTABLE WATER	600 GPM @ 150 ft	136.27m ³ /hr @ 45.72 m
FUEL	600 GPM @ 150 ft	136.27m ³ /hr @ 45.72 m
LIQUID MUD	1,200 GPM @ 150 ft	272.55 m ³ /hr @ 45.72 m
DRY BULK	1,000 ft ³ /hr @ 80 psi	28.32 m ³ /hr @ 5.52 bar
BRINE	1,200 GPM @ 150 ft	272.55 m ³ /hr @ 45.72 m
BASE OIL	1,200 GPM @ 150 ft	272.55 m ³ /hr @ 45.72 m

ACCOMMODATION

CABINS/BERTHS	9 cabins / 18 berths
OFFICERS	2 cabins / 2 x 1
CREW	3 cabins / 3 x 2
PASSENGERS	4 cabins / 1 x 4 & 3 x 2
MESS	Seating for 16
WALK IN REFRIGERATION	Cooler / Freezer

ELECTRONICS & CONTROLS

DYNAMIC POSITIONING	Kongsberg, Simrad DP1
DGPS	1 - C-NAV 2050 / 1 - C-NAV 1000
LASER REFERENCE SYSTEM	MDL Fanbeam 4.2
JOYSTICK	2 - Kongsberg Simrad
COMPASS	1 - Magnetic / 2 - Gyro C-Plath
AUTOPILOT	Kongsberg
GPS	2 - Furuno
RADAR(S)	2 - Furuno
DEPTH SOUNDER	1 - Furuno
AIS	Furuno FA - 100
ELECTRONIC CHART SYSTEM	Coastal Explorer

COMMUNICATIONS

GMDSS	Furuno
SSB	1 - Furuno, 1 - ICOM
VHF	2 - Furuno, 4 - ICOM
NAVTEX	Furuno
EMAIL	Globe Wireless
WEATHER RADIO	XM
SATELLITE TV	Yes

SAFETY

LIFERAFTS	4 x 16 man each
MOB FAST RESCUE BOAT	1 x 6 man

DOCUMENTATION

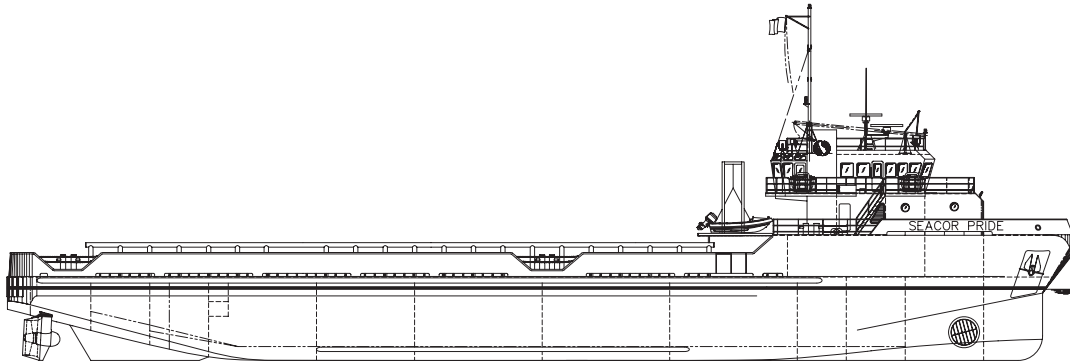
CLASS	✳ A1, ✳AMS, ✳DPS-1 UWILD
FLAG/PORT OF REGISTRY	USA New Orleans, LA.
SOLAS	Full
USCG	Sub Chapter L, OSV
OFFICIAL NUMBER	1140485
IMO	9283564
CALL SIGN	WDB7465
YEAR BUILT	2004
BUILDER	VT Halter Marine, Inc

Information provided is for guidance purposes only and are not guaranteed. Please verify accuracy with SEACOR Marine representative(s)

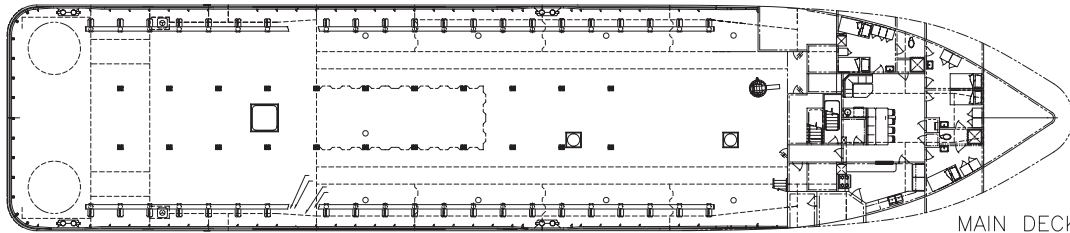
217' PSV SEACOR PRIDE



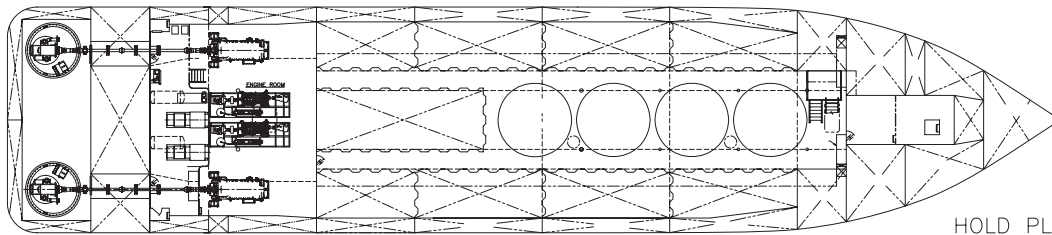
217' PSV SEACOR PRIDE



OUTBOARD PROFILE



MAIN DECK



HOLD PLAN