

OVER
35
YEARS

LIFTBOAT EXPERIENCE IN THE GULF OF MEXICO



MONTCO

Established 1948



L/B MYRTLE CLASS 245'

SELF-ELEVATING VESSEL -- YEAR BUILT - 2002
OFFICIAL NUMBER – 1125196 – CALL SIGN – WDA8679

DIMENSIONS:

Length (Overall)	137.5' (42.31m)
Beam (Overall)	100' (30.77m)
Beam (Barge Only)	69' (21.33m)
Depth (Barge Only)	13' (4m)
Design Draft	7' (2.15m)

HULL CHARACTERISTICS:

Gross Tonnage	173 tons (1305 ITC)
Open Deck Area	6,550 ft. ² (609m ²)
Total Usable Space	9,000 ft. ² (836m ²)
Max. Deck Load	950,000 lbs (431,818 kg)

LEGS:

Number	3
Length	245' (75.38m)
Size	72" diameter x 1.5" wall thickness (182.88cm dia. x 3.81cm wall thickness)
Material	API 5LX-70 KSI Steel

PADS:

Length	40' (12.31m)
Width	16' (4.92m)
Depth	3' (0.92m)
Configuration	Raked on both ends

CRANE CAPACITY:

Number	3(API-2C Certified)
Primary Crane	150 Tons @ 30' radius (136,363 kg @ 9.23m)
Boom Length	110' (33.85m) lattice type
Heal Pin	12' (3.69m) above deck
#1 Auxiliary Crane	50 Tons @ 10' radius (45,454 kg @ 3.08m)
Boom Length	(Telescoping) 50'-70' (15.38m- 21.54m)
#2 Auxiliary Crane	25 Tons @ 10' radius (22,727 kg @ 3.08m)
Boom Length	Fixed Boom 70' (21.54m)

PROPULSION:

Main Engines	(2) Caterpillar 3512
Horsepower/engine	1500 @ 1800 rpm
Reduction Gear	(2) Reintjes
Propellers	(2) CPP

Bow Thruster 350 hp hydraulic

CAPACITIES:

Fuel	32,380 gal (122,571 L)
Potable Water	21,030 gal (79,607 L)
Lube Oil	1410 gal (5,337 L)
Hydraulic Oil	1400 gal (5,300 L)
Submersible Pumps	2 @ 150 GPM each (2 @ 567.75 L/min)

GENERATORS:

Engines (2)	Caterpillar 3306
Generators (2)	190KW, 460 VAC, 3 PH, 60 Hz

LIVING QUARTERS:

Berths	Total 46 (10 Crew / 36 PACs)
Galley	Ref., Fr., Ice Maker, Range
Sanitary Facilities	(12) Heads
Laundry	(3) Washers and (3) Dryers

NAVIGATION EQUIPMENT:

Radar, VHF's, Fathometer, Compass, Single Sideband, AIS, Auto Pilot, GPS, Anemometer, Electronic Charting, GMDSS Station, SSAS, SpeedDoppler

JACKING:

Max. Working Water Depth	180' (55.38m)
Max. Height of Deck above mud line (Subtract Penetration)	223' (68.62m)

SPECIAL FEATURES:

Joystick Controlled, Separate VIP Room Facilities, Zero Discharge Capability, Marine Sewage Treatment System Walk-in Cooler & Freezer

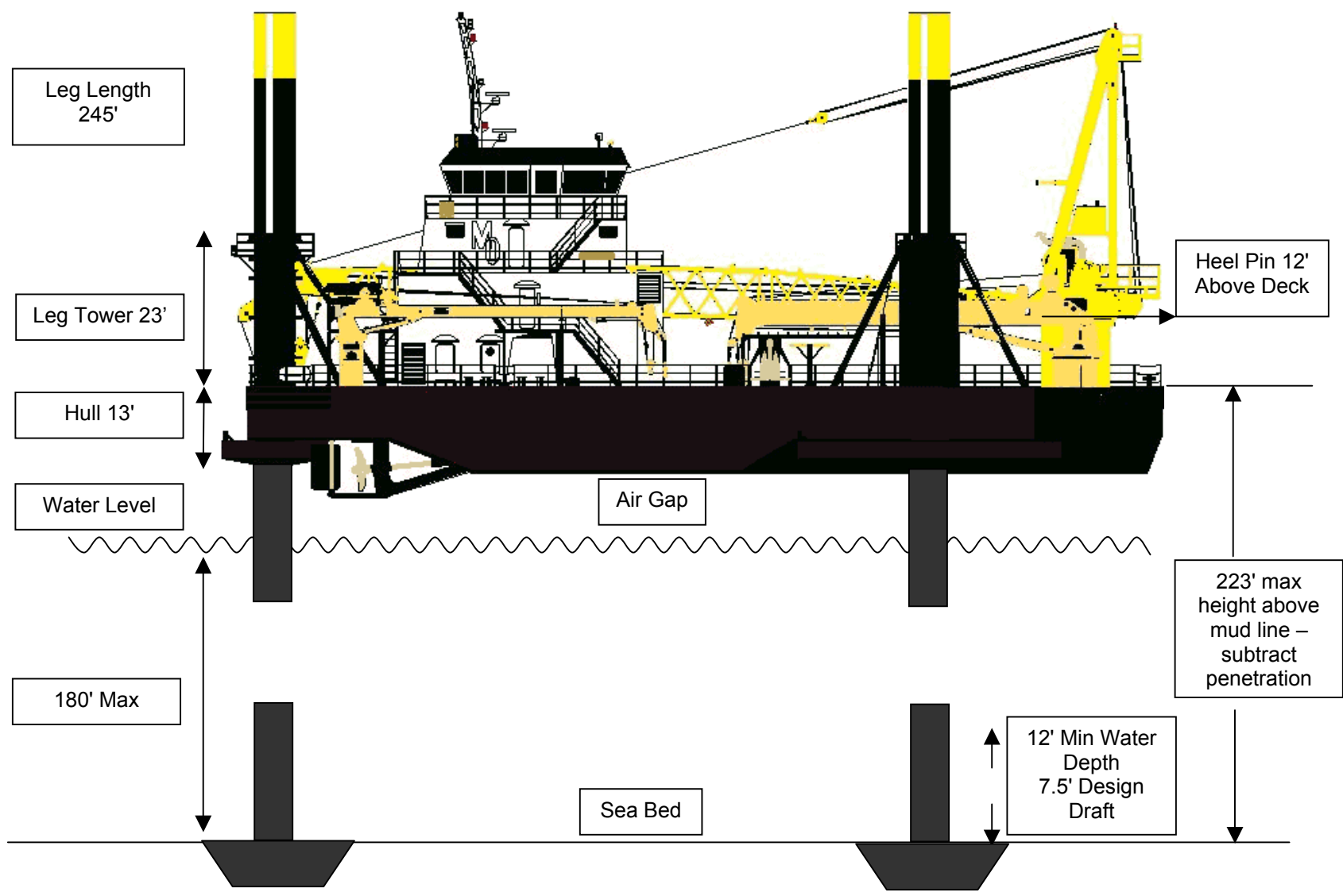
ESTIMATED SPEED: 6 Knots

FUEL CONSUMPTION:

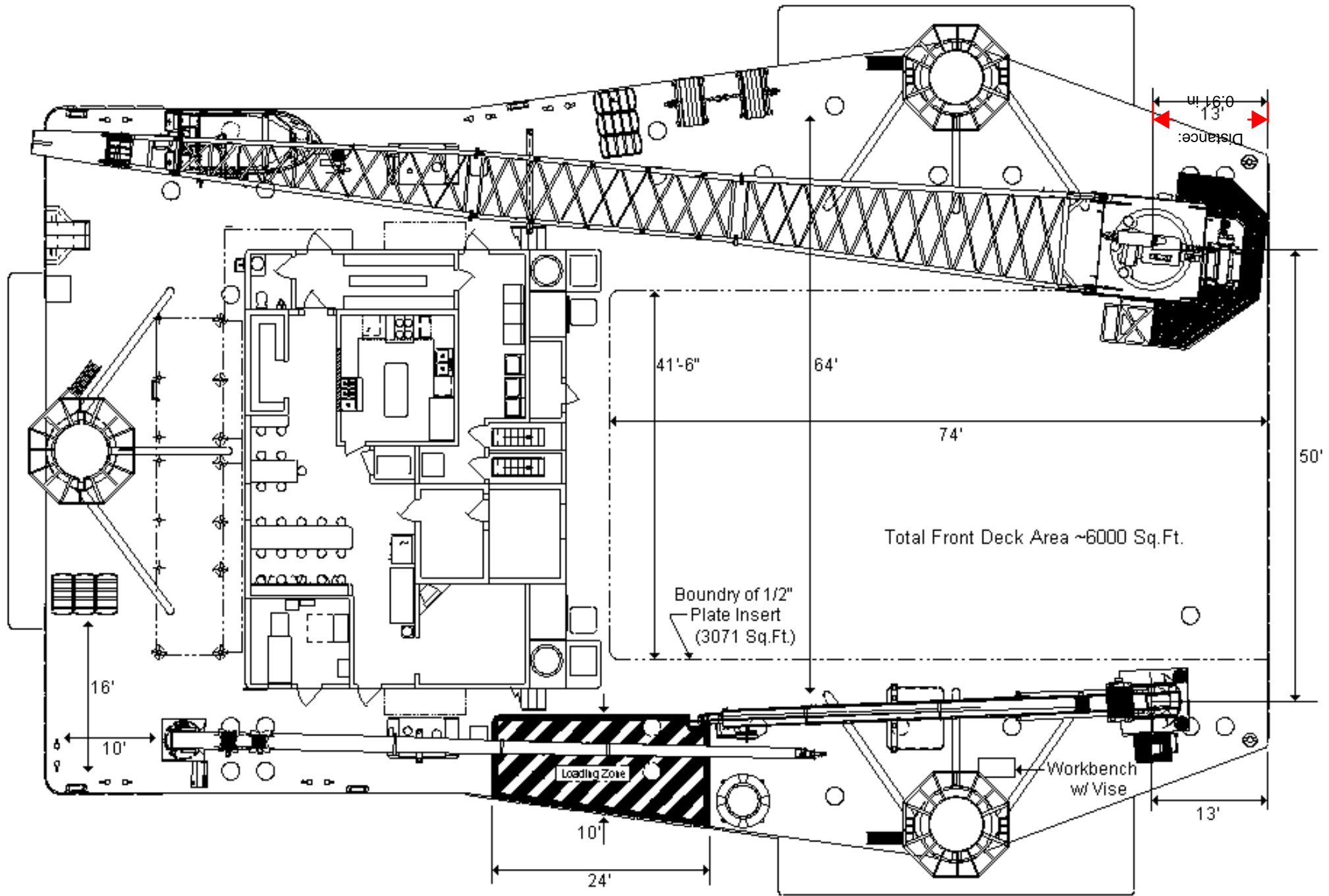
Main Engines	85 gal/hr = 2040 gal/day (321 L/hr = 7722 L/day)
Generators	4.8 gal/hr = 116 gal/day (18.17 L/hr = 439 L/day)
Crane Engine	5-7 gal/hr (19-27 L/hr)

REGULATORY CLASSIFICATION:

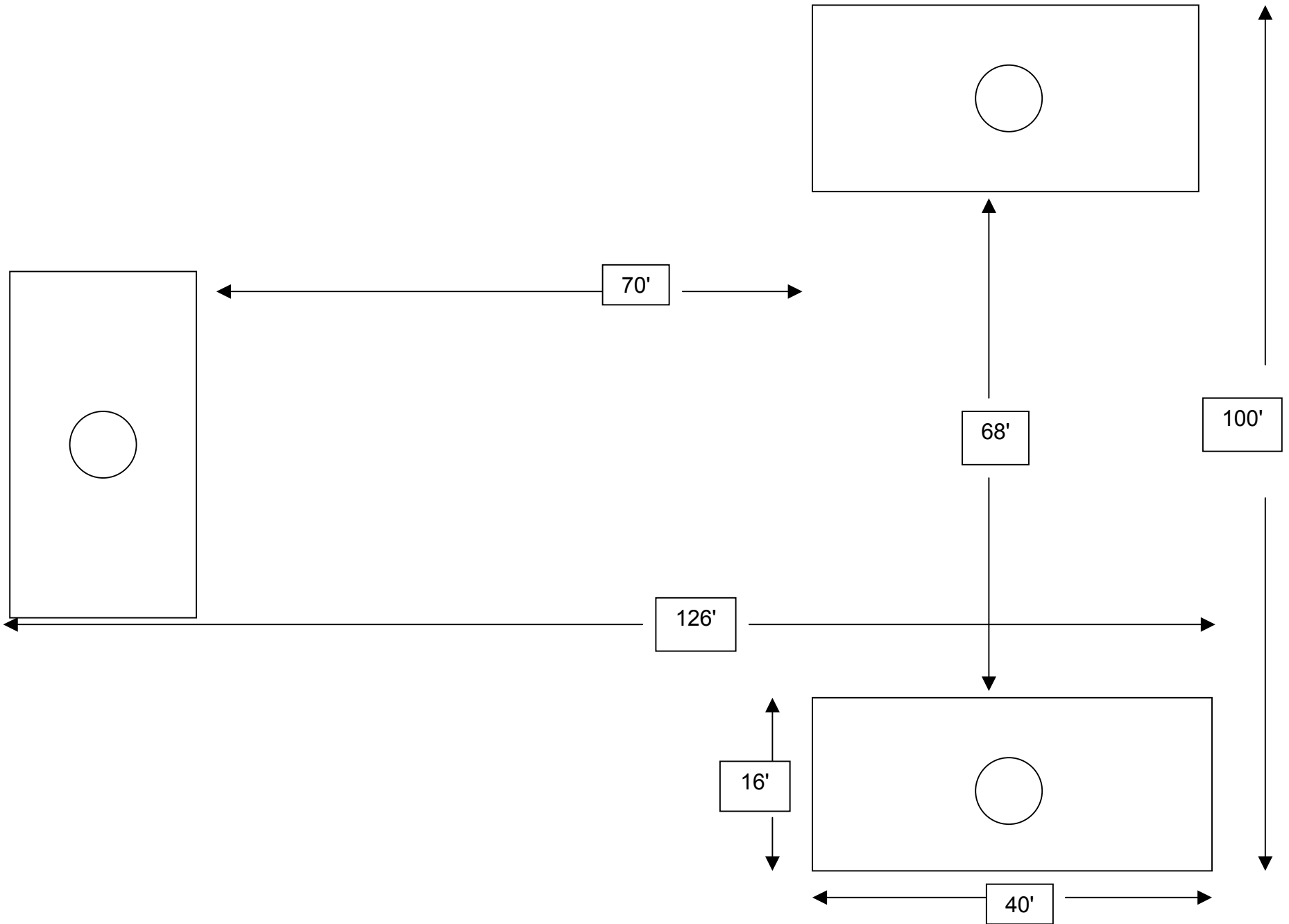
USCG O.S.V., SOLAS/MARPOL, ABS Class



L/B Myrtle 245' Class



MAIN DECK PLAN



L/B Myrtle (Distance between leg pads)

L/B MYRTLE

LIFTING LOAD CAPACITY CHART NAUTILUS MODEL 1100L1-100 MARINE CRANE

RADIUS (FT.)	BOOM ANGLE (DEG.)	MAIN HOIST										AUXILIARY HOIST		
		12 PART REEVING		10 PART REEVING		8 PART REEVING		6 PART REEVING		4 PART REEVING		2 PART REEVING		
		STATIC (LBS.)	DYNAMIC (LBS.)	STATIC (LBS.)	DYNAMIC (LBS.)	STATIC (LBS.)	DYNAMIC (LBS.)	STATIC (LBS.)	DYNAMIC (LBS.)	STATIC (LBS.)	DYNAMIC (LBS.)	STATIC (LBS.)	DYNAMIC (LBS.)	PERSONNEL (LBS.)
20.5	84	310,304	220,000	261,963	220,000	212,429	212,429	161,104	161,104	107,690	107,690	20,000	13,333	6,048
25	82	310,304	220,000	261,963	220,000	212,429	212,429	161,104	161,104	107,690	107,690	20,000	13,333	6,048
30	79	297,414	196,276	261,963	196,276	212,429	196,276	161,104	161,104	107,690	107,690	20,000	13,333	6,048
35	76	252,948	166,632	252,948	166,632	212,429	166,632	161,104	161,104	107,690	107,690	20,000	13,333	6,048
40	74	217,924	143,283	217,924	143,283	212,429	143,283	161,104	143,283	107,690	107,690	20,000	13,333	6,048
45	71	190,888	125,259	190,888	125,259	190,888	125,259	161,104	125,259	107,690	107,690	20,000	13,333	6,048
50	68	169,656	111,104	169,656	111,104	169,656	111,104	161,104	111,104	107,690	107,690	20,000	13,333	6,048
55	65	152,448	99,632	152,448	99,632	152,448	99,632	152,448	99,632	107,690	99,632	20,000	13,333	6,048
60	62	138,200	90,133	138,200	90,133	138,200	90,133	138,200	90,133	107,690	90,133	20,000	13,333	6,048
65	59	126,215	82,143	126,215	82,143	126,215	82,143	126,215	82,143	107,690	82,143	20,000	13,333	6,048
70	56	115,992	75,328	115,992	75,328	115,992	75,328	115,992	75,328	107,690	75,328	20,000	13,333	6,048
75	53	107,272	69,515	107,272	69,515	107,272	69,515	107,272	69,515	107,272	69,515	20,000	13,333	6,048
80	49	99,523	64,349	99,523	64,349	99,523	64,349	99,523	64,349	99,523	64,349	20,000	13,333	6,048
85	46	92,812	59,875	92,812	59,875	92,812	59,875	92,812	59,875	92,812	59,875	20,000	13,333	6,048
90	42	86,424	55,616	86,424	55,616	86,424	55,616	86,424	55,616	86,424	55,616	20,000	13,333	6,048
95	38	80,580	51,720	80,580	51,720	80,580	51,720	80,580	51,720	80,580	51,720	20,000	13,333	6,048
100	33	75,301	48,201	75,301	48,201	75,301	48,201	75,301	48,201	75,301	48,201	20,000	13,333	6,048
105	28	70,506	45,004	70,506	45,004	70,506	45,004	70,506	45,004	70,506	45,004	20,000	13,333	6,048
110	21	66,063	42,042	66,063	42,042	66,063	42,042	66,063	42,042	66,063	42,042	20,000	13,333	6,048
115	11	61,975	39,317	61,975	39,317	61,975	39,317	61,975	39,317	61,975	39,317	20,000	13,333	6,048
116.7	0	56,498	35,665	56,498	35,665	56,498	35,665	56,498	35,665	56,498	35,665	20,000	13,333	6,048

Serial Number: 030105C

P/N: N2001SK3-118

L/B MYRTLE

LIFTING LOAD CAPACITY CHART NAUTILUS MODEL 340BT-50/70 MARINE CRANE

RADIUS (FT.)	BOOM ANGLE (DEG.)	50 FOOT BOOM - RETRACTED								
		MAIN HOIST 6 PART REEVING		MAIN HOIST 4 PART REEVING		MAIN HOIST 2 PART REEVING		AUXILIARY HOIST 1 PART REEVING		
		STATIC (LBS.)	DYNAMIC (LBS.)	STATIC (LBS.)	DYNAMIC (LBS.)	STATIC (LBS.)	DYNAMIC (LBS.)	STATIC (LBS.)	DYNAMIC (LBS.)	PERSONNEL (LBS.)
7.9	82	100,000	66,667	68,830	66,667	33,790	33,790	8,610	8,610	2,436
10	80	100,000	66,667	68,830	66,667	33,790	33,790	8,610	8,610	2,436
15	74	100,000	66,667	68,830	66,667	33,790	33,790	8,610	8,610	2,436
20	68	100,000	66,667	68,830	66,667	33,790	33,790	8,610	8,610	2,436
25	62	97,364	64,493	68,830	64,493	33,790	33,790	8,610	8,610	2,436
30	55	83,345	55,147	68,830	55,147	33,790	33,790	8,610	8,610	2,436
35	48	72,461	47,891	68,830	47,891	33,790	33,790	8,610	8,610	2,436
40	39	63,230	41,737	63,230	41,737	33,790	33,790	8,610	8,610	2,436
45	29	54,163	35,692	54,163	35,692	33,790	33,790	8,610	8,610	2,436
50	0	30,776	20,101	30,776	20,101	30,776	20,101	8,610	8,610	2,436

RADIUS (FT.)	BOOM ANGLE (DEG.)	70 FOOT BOOM - EXTENDED								
		MAIN HOIST 6 PART REEVING		MAIN HOIST 4 PART REEVING		MAIN HOIST 2 PART REEVING		AUXILIARY HOIST 1 PART REEVING		
		STATIC (LBS.)	DYNAMIC (LBS.)	STATIC (LBS.)	DYNAMIC (LBS.)	STATIC (LBS.)	DYNAMIC (LBS.)	STATIC (LBS.)	DYNAMIC (LBS.)	PERSONNEL (LBS.)
10.7	82	98,750	65,417	68,830	65,417	33,790	33,790	8,610	6,457	3,123
15	79	96,350	63,817	68,830	63,817	33,790	33,790	8,610	6,457	3,123
20	74	84,137	55,675	68,830	55,675	33,790	33,790	8,610	6,457	3,123
25	70	74,658	49,355	68,830	49,355	33,790	33,790	8,610	6,457	3,123
30	66	67,082	44,305	67,082	44,305	33,790	33,790	8,610	6,457	3,123
35	61	60,815	40,127	60,815	40,127	33,790	33,790	8,610	6,457	3,123
40	57	55,796	36,781	55,796	36,781	33,790	33,790	8,610	6,457	3,123
45	52	51,649	34,016	51,649	34,016	33,790	33,790	8,610	6,457	3,123
50	46	48,215	31,727	48,215	31,727	33,790	31,727	8,610	6,457	3,123
55	40	45,395	29,847	45,395	29,847	33,790	29,847	8,610	6,457	3,123
60	33	41,132	27,005	41,132	27,005	33,790	27,005	8,610	6,457	3,123
65	24	35,903	23,519	35,903	23,519	33,790	23,519	8,610	6,457	3,123
70	0	21,337	13,808	21,337	13,808	21,337	13,808	8,610	6,457	3,123

L/B MYRTLE

LIFTING LOAD CAPACITY CHART NAUTILUS MODEL 60B2A-70 MARINE CRANE

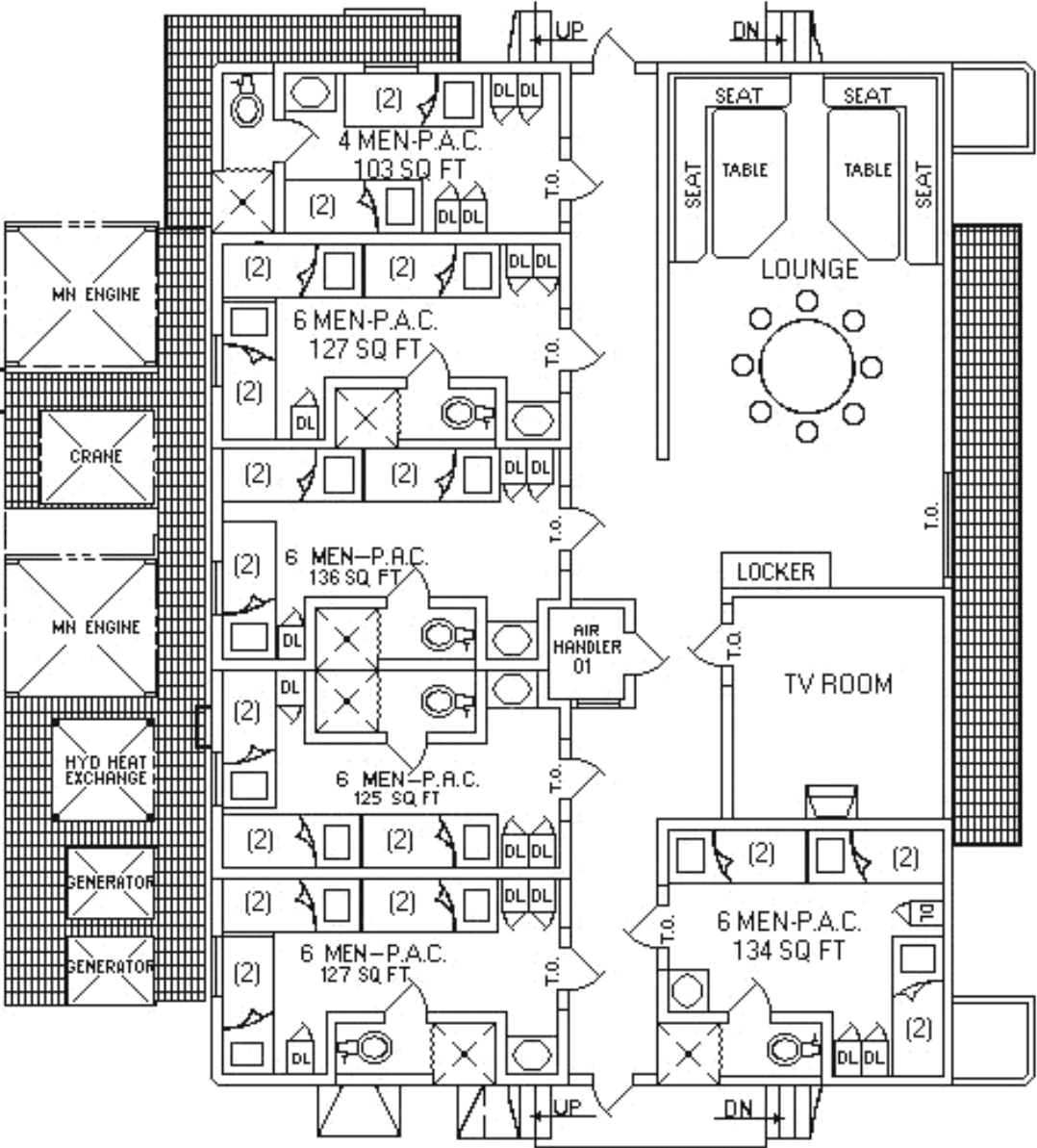
RADIUS (FT)	BOOM ANGLE (DEG.)	MAIN HOIST 6 PART REEVING		MAIN HOIST 4 PART REEVING		AUXILIARY HOIST 1 PART REEVING		
		STATIC (LBS)	DYNAMIC (LBS)	STATIC (LBS)	DYNAMIC (LBS)	STATIC (LBS)	DYNAMIC (LBS)	PERSONNEL (LBS)
11.8	81	47,752	31,655	32,233	31,655	8,610	6,457	2,436
15	78	44,787	29,591	32,233	29,591	8,610	6,457	2,436
20	74	40,666	26,844	32,233	26,844	8,610	6,457	2,436
25	70	36,885	24,323	32,233	24,323	8,610	6,457	2,436
30	65	30,066	19,777	30,066	19,777	8,610	6,457	2,436
35	61	25,146	16,497	25,146	16,497	8,610	6,457	2,436
40	56	21,427	14,018	21,427	14,018	8,610	6,457	2,436
45	51	18,517	12,078	18,517	12,078	8,610	6,457	2,436
50	45	16,178	10,519	16,178	10,519	8,610	6,457	2,436
55	39	14,255	9,237	14,255	9,237	8,610	6,457	2,436
60	32	12,645	8,163	12,645	8,163	8,610	6,457	2,436
65	23	11,276	7,251	11,276	7,251	8,610	6,457	2,436
70	0	8,281	5,254	8,281	5,254	8,610	5,844	2,436

- * MAIN HOIST CAPACITIES ARE BASED ON 6 & 4 PART LINE OF 5/8" DIAMETER, DYFORM-18 HSLR WIRE ROPE. (BREAKING STRENGTH = 45,400 LBS.). 677 FT. OF WIRE ROPE IS REQUIRED.
- * AUXILIARY HOIST CAPACITIES ARE BASED ON SINGLE PART LINE OF 5/8" DIAMETER, DYFORM-18 HSLR WIRE ROPE. (BREAKING STRENGTH = 45,000 LBS.). 231 FT. OF WIRE ROPE IS REQUIRED.
- * SHEAVE EFFICIENCY IS INCLUDED.
- * ALL RATINGS IN ACCORDANCE WITH API SPECIFICATION 2C (SPEC 2C), FIFTH EDITION, APRIL 3, 1995. A DYNAMIC COEFFICIENT (cb) OF 2.0 IS USED.
- * THE ABOVE RATINGS ARE CONSIDERED "NET RATINGS" AS THE LOAD BLOCK WEIGHT OF 800 LBS. AND OVERHAUL BALL WEIGHT OF 210 LBS. HAVE ALREADY BEEN DEDUCTED.

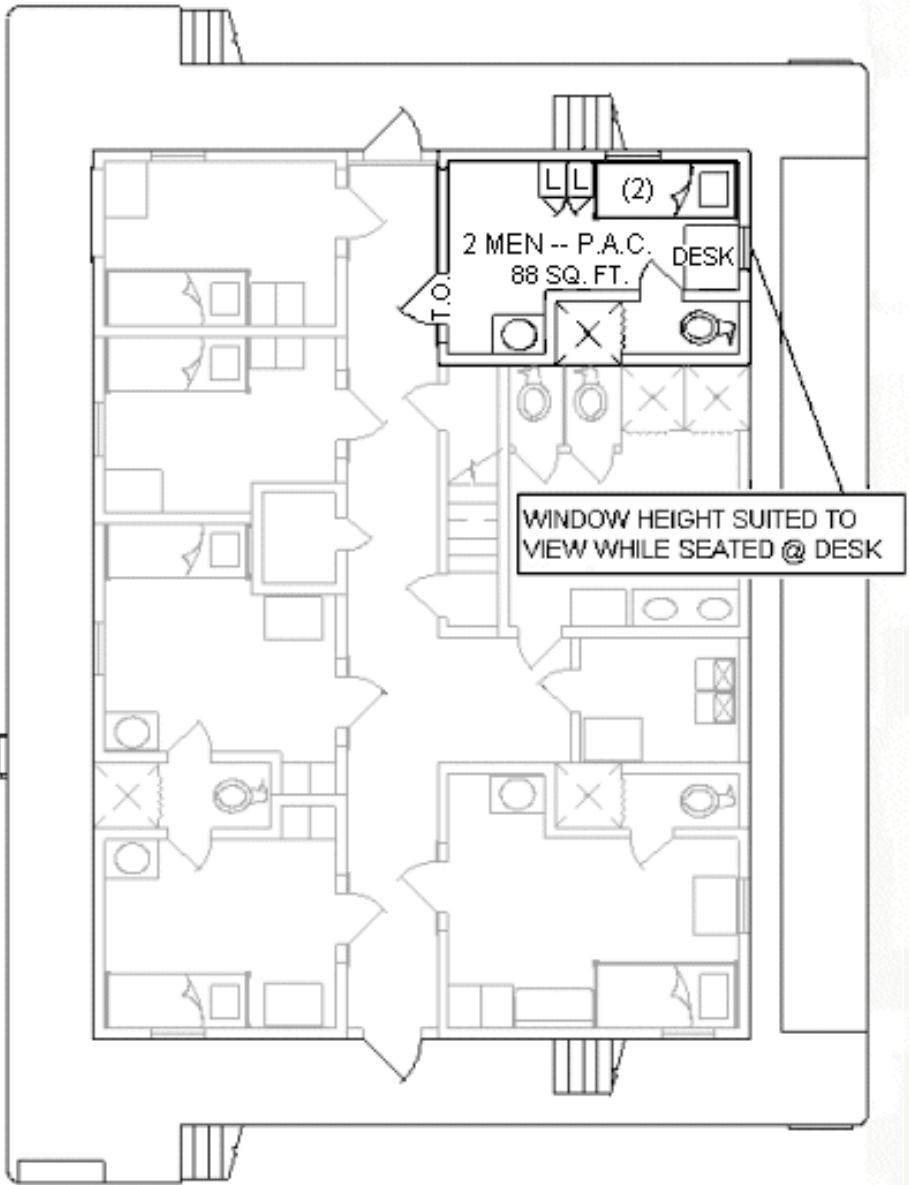
SERIAL NUMBER: 030103C

P/N: N2001SK3-132

L/B MYRTLE Company Accommodations



DECK 01 -- COMPANY CREW



DECK 02 -- COMPANY REPRESENTATIVE