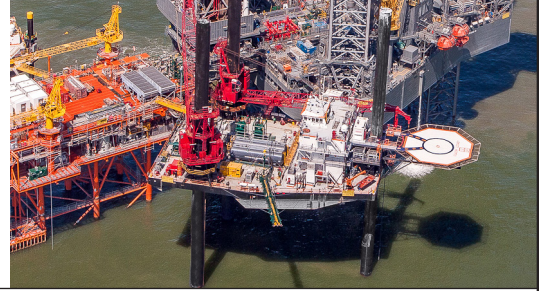


SEACOR LEGACY

CLASS 250' LIFTBOAT



LEG

NUMBER OF LEGS	3	
LEG LENGTH	250 ft.	76.2 m
LEG DIAMETER	102 in	2.6 m
LEG WALL	1.125 in	2.9 cm
LEG TOWER HEIGHT	19 ft.	5.8 m
TRIANGLE	91 ft. P/S x 132 ft. A	27.7 m P/S x 40.2 m A

HULL

LENGTH	225 ft.	68.6 m
LENGTH (BARGE ONLY)	157 ft.	47.9 m
BEAM	120 ft.	36.6 m
BEAM (BARGE ONLY)	103 ft.	31.4 m
HULL DEPTH	13 ft.	4 m
DESIGN DRAFT	13 ft. 5 in	4.1 m
REGISTERED TONNAGE	N/A	
INTERNATIONAL TONNAGE	2,259 t / 677 t	

PAD

PAD LENGTH	49 ft.	14.9 m
PAD WIDTH	29 ft.	8.8 m
PAD DEPTH	5 ft.	1.5 m
PAD LOADING	N/A	
DECK LOADING	N/A	
	Raked at both ends	

CRANE

	PORT	STARBOARD
MAKE	SeaTrax	SeaTrax
MODEL	10520	10520
LOAD RATINGS	185 TONS	185 TONS
BOOM TYPE	Lattice	Lattice
BOOM LENGTH	120 ft. / 36.6 m	120 ft. / 36.6 m
CRANE INST. TYPE	Leg Mount	Leg Mount
PUBLISHED LOAD RATINGS ARE BASED UPON A 40 FT. RADIUS		

PROPULSION

MAINS - MAKE	Caterpillar
MAINS - MODEL	3508B
HORSEPOWER	3800
BOW THRUSTER EQUIPPED	YES
CLUTCH MAKE/REDUCTION	6.18:1

DECK

TOTAL DECK AREA	10,000 ft ²	929 m ²
USABLE DECK AREA	8,083 ft ² (92.7 x 87.2)	751 m ²
MAXIMUM DECKLOAD	750,000 lbs.	340,194 kg

GENERATORS

GENERATOR ENGINE MAKE	Caterpillar	
GENERATOR ENGINE MODEL	3412	
GENERATOR OUTPUT	425 kw	
AUX GENSET EQUIPPED	FULLY EQUIPPED	Output : 190 kw

CAPACITIES

DIESEL FUEL	40,488 USG	153.3 m ³
POTABLE WATER	29,676 USG	112.3 m ³
WATERMAKER EQUIPPED	N/A	

ELECTRONIC AIDS & COMMUNICATIONS

COMPASS	FULLY EQUIPPED
GPS/DGPS	FULLY EQUIPPED
RADAR(S)	FULLY EQUIPPED
FATHOMETER	FULLY EQUIPPED
LOUDHAILER	FULLY EQUIPPED
SATELLITE PHONE	FULLY EQUIPPED
PRIVATE FREQ. RADIOTELEPHONE	FULLY EQUIPPED
VHF RADIO	FULLY EQUIPPED
SINGLE SIDEBAND RADIO	FULLY EQUIPPED
GMDSS	FULLY EQUIPPED

PERSONNEL ACCOMMODATIONS

TOTAL ACCOMMODATIONS	50
VIP ACCOMMODATIONS	2
CREW ACCOMMODATIONS	12
CONTRACTOR ACCOMMODATIONS	36
TRANSIT PASSENGERS	36
GALLEY & DINING	FULLY EQUIPPED
TV LOUNGE	FULLY EQUIPPED
LAUNDRY FACILITY	FULLY EQUIPPED
AIR CONDITION / HEATER	Standard Electrical Commercial Units
HELIPORT	AFT-Helipad 48 ft. / 14.6 m diameter
	Load rating 12,000 lbs / 5,443 kg

PERFORMANCE

ESTIMATED SPEED	5 mph / 4.34 knots	8kph
MAX SEPARATION, PAD TO DECK	231 ft.	70.4 m
MAX WORKING WATER DEPTH	180 ft.	54.9 m
MIN WORKING WATER DEPTH	14 ft.	4.3 m
MAX JACKING SOFT BOTTOM	5 ft.	1.5 m
SEA STATES HARD BOTTOM	4 ft.	1.2 m

DOCUMENTATION

CLASS	ABS
FLAG/PORT OF REGISTRY	USA / New Orleans, LA
SOLAS	
USCG	
OFFICIAL NUMBER	1095071
IMO	8765046
CALL SIGN	WDG 3590
VESSEL DELIVERY DATE	2001
BUILDER	SEMCO
ZERO DISCHARGE CAPABLE	YES
ZERO DISCHARGE READY	YES

This specification is preliminary and subject to change without notice. Exact tank capacities, deadweight, deck cargo capacity and other figures that have been calculated and may change when the actual vessel is delivered.

SEACOR LEGACY

CLASS 250' LIFTBOAT

MODEL - SEATRAX LM 10520 LEG CRANE LOAD CHART ABS

PORT LEG & STBD LEG

CRANE RADIUS IN FEET	6-PART MAIN HOIST		1-PART AUXILIARY HOIST	
	STATIC	DYNAMIC	STATIC	DYNAMIC
25	372,317	372,317	55,034	55,034
30	372,317	372,317	55,034	55,034
35	372,317	372,317	55,034	55,034
40	372,317	342,243	55,034	55,034
45	331,833	301,348	55,034	55,034
50	295,845	268,632	55,034	55,034
55	266,400	241,364	55,034	55,034
60	241,863	219,557	55,034	55,034
65	221,101	200,683	55,034	55,034
70	203,305	184,504	55,034	55,034
75	187,881	170,483	55,034	55,034
80	174,386	158,214	55,034	55,034
85	162,478	147,389	55,034	55,034
90	151,893	137,767	55,034	55,034
95	142,423	129,157	55,034	55,034
100	133,900	121,409	55,034	55,034
105	126,188	114,398	55,034	55,034
110	119,177	108,025	55,034	55,034
115	112,776	102,206	55,034	55,034
120	106,909	96,871	55,034	55,034
127	98,973	89,657	55,034	55,034

IMPORTANT: THIS TEXT APPLIES TO BOTH CHARTS

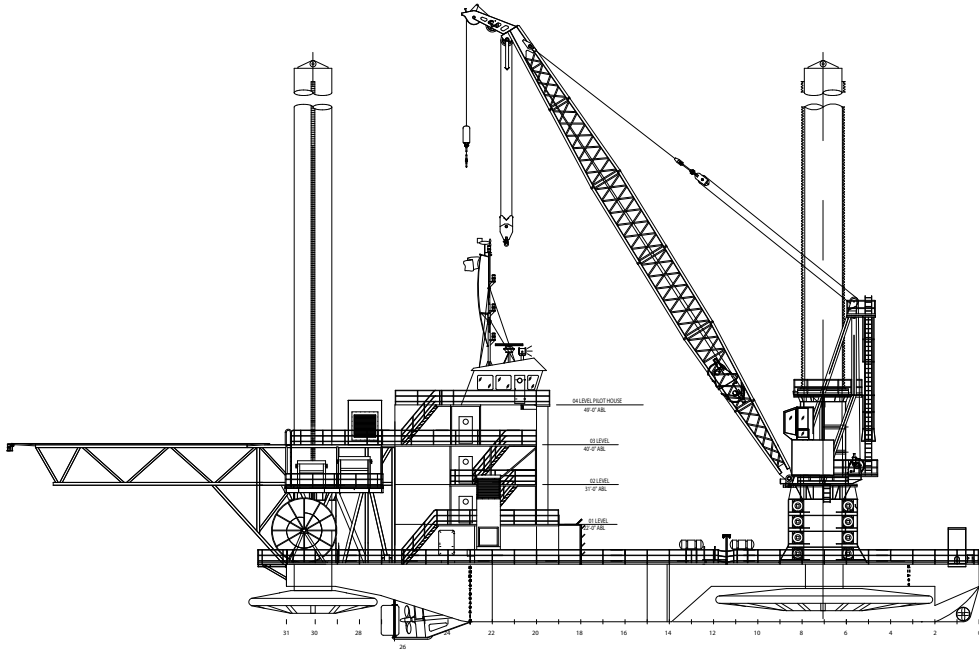
1. STATIC SWLS ARE TO BE USED ONLY FOR LIFTS FROM STATIONARY PLATFORMS. DYNAMIC SWLS SHALL BE USED FOR LIFTS FROM VESSELS.
2. LOWER CASE LETTERS AFTER SWLS INDICATE THE LOAD LIMITING FACTOR REFERENCED IN API SPEC 2C, SEC 3, 3.1.2 (A) THRU (F).
3. RATED LOADS ARE NET LOADS. A 3000 LB. MAIN HOOK BLOCK AND A 500 LB. OVERHAUL BALL HAVE BEEN DEDUCTED FROM GROSS LOADS.
4. MAIN DRUM CABLE IS 1.5 DIAMETER 18 X 19 HSLR, 250.0 KIP NOM STRENGTH, 1280 FT.
5. AUX DRUM CABLE IS 1.5 DIAMETER 18 X 19 HSLR, 250.0 KIP NOM STRENGTH, 330 FT.
6. THE SPECIFIED HOOK TRAVEL FOR THIS MACHINE IS 190 FT.

SEATRAX MONARCH SERIES 105 MODEL 10520

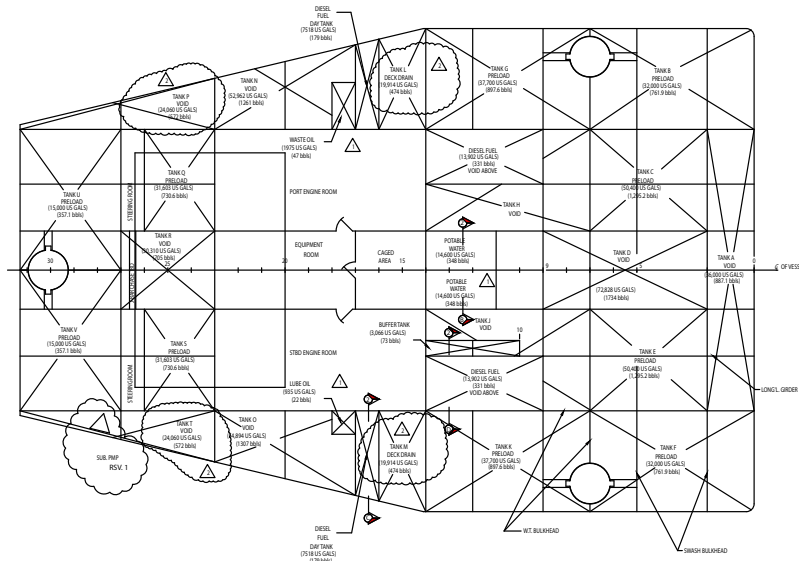
API STATIC & DYNAMIC RATINGS

CRANE RADIUS IN FEET	2-PART MAIN		4-PART MAIN		6-PART MAIN		SINGLE AUX	
	STATIC	DYNAMIC	STATIC	DYNAMIC	STATIC	DYNAMIC	STATIC	DYNAMIC
25	97000B	97000B	191797A	197000B	191797A	287695A	49500B	49500B
30	97000B	97000B	160416A	197000B	160416A	240624A	49500B	49500B
35	97000B	97000B	137445A	197000B	137445A	206168A	49500B	49500B
40	97000B	97000B	119851A	179776A	119851A	179776A	49500B	49500B
45	97000B	97000B	105949A	158924A	105949A	158924A	49500B	49500B
50	94829A	97000B	94829A	142243A	94829A	142243A	49500B	49500B
55	85555A	97000B	85555A	128333A	85555A	128333A	49500B	49500B
60	77749A	97000B	77749A	116622A	77749A	116622A	49500B	49500B
65	71146A	97000B	71146A	106719A	71146A	106719A	49500B	49500B
70	65489A	97000B	65489A	98234A	65489A	98234A	49500B	49500B
75	60526A	90789A	60526A	90789A	60526A	90789A	49500B	49500B
80	56186A	84279A	56186A	84279A	56186A	84279A	49500B	49500B
85	52304A	78457A	52304A	78457A	52304A	78457A	49500B	49500B
90	48858A	73287A	48858A	73287A	48858A	73287A	48858A	49500B
95	45777A	68665A	45777A	68665A	45777A	68665A	45777A	49500B
100	43007A	64510A	43007A	64510A	43007A	64510A	43007A	49500B
105	40461A	60691A	40461A	60691A	40461A	60691A	40461A	49500B
110	38149A	57224A	38149A	57224A	38149A	57224A	38149A	49500B
115	36080A	54121A	36080A	54121A	36080A	54121A	36080A	49500B
120	34113A	51170A	34113A	51170A	34113A	51170A	34113A	49500B
127	31527A	47291A	31527A	47291A	31527A	47291A	31527A	47291A

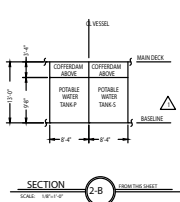
**SEACOR LEGACY
CLASS 250' LIFTBOAT**



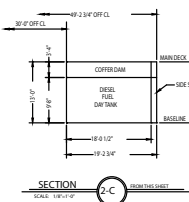
OUTBOARD PROFILE
STARBOARD SIDE SHOWN
SCALE: 1/8" = 1'-0"



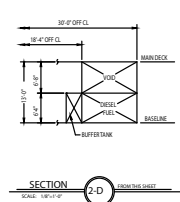
TANK ARRGT. PLAN VIEW
SCALE: 1/8" = 1'-0"



SECTION 2-B
SCALE: 1/8" = 1'-0"



SECTION 2-C
SCALE: 1/8" = 1'-0"



SECTION 2-D
SCALE: 1/8" = 1'-0"