

8,000 BHP – AHTS SEACOR VALOR



8,000 BHP – AHTS SEACOR VALOR

MAIN PARTICULARS

LENGTH OVERALL	220 ft.	67 m
LENGTH BP	210 ft.	64 m
BEAM	45.93 ft.	14 m
DEPTH	19.69 ft.	6 m
LIGHT DRAFT	8 ft.	2 m
LOADED DRAFT	16.78 ft.	5 m
SUMMER FREEBOARD	3 ft.	1 m
LIGHTSHIP	1,444 LT.	1,470 MT.

CAPACITIES

DRILL WATER	211,360.63 USG	800 m ³
POTABLE WATER	31,704.1 USG	120 m ³
FUEL	183,091.15 USG	693 m ³
LIQUID MUD	3,320 BBLs	528 m ³
DRY BULK	8,369 ft. ³	237 m ³
BRINE	139,440 USG	528 m ³
MAX RIG CHAIN	10,000 ft.	3,048 m
DEADWEIGHT	2,159 LT.	2,198 MT.

CARGO DECK

TONNAGE	934.98 LT.	952 MT.
STRENGTH	0.2 LT./ft. ²	5 MT./m ²
LENGTH	124.67 ft.	38 m
WIDTH	36.09 ft.	11 m
CLEAR AREA	4,499.46 ft. ²	418 m ²

TONNAGE

GRT	1,508 tons
NRT	452 tons

MACHINERY

MAIN ENGINES	2 EMD 16 710G7B
BRAKE HORSEPOWER	8000
REDUCTION GEARS	2 Reintjes Double Reduction
GEAR RATIO	4.55:1
PROPELLERS	2 Berg 4 Blade CPP
RUDDERS	2 Yoked Fishtail
SHAFT GENERATORS	None
AUXILIARY GENERATORS	(2) 8-V-71 Detroit Diesel
EMERGENCY GENERATOR	(2) 165
BOW THRUSTERS	1010 BHP
STERN THRUSTER(S)	None

TOWING & ANCHOR HANDLING

WINCH MODEL	SMATCO 96 DAW550K	
LINE PULL	202 LT.	206 MT.
WIRE CAPACITY	9,400 ft. x 3 inch wire	2,865 M. x 76 mm. of wire
TRACTION WINCH LINE PULL	0 LT. @ 0 ft./min	0 MT. @ 0 M./min
TRACTION WINCH WIRE CAPACITY	0 ft. x 0 inch wire	0 M. x 0 mm. of wire
BOLLARD PULL	106 LT.	108 MT.
CHAIN STOPPER(S)	1 Triplex Shark Jaw 350 LT. – 356 MT.	
TOWING PINS	2 x Triplex TP 48	
STERN ROLLER	13 ft. x 7 ft. - 0 LT.	4 M. x 2 M. - 0 MT.
TUGGER WINCHES	2 x 0 LT. – 0 MT.	
CAPSTANS	0 0	0

PERFORMANCE

MAXIMUM SPEED	13 knots	
CRUISING SPEED	11 knots	
MAXIMUM FUEL CONSUMPTION	308 USG/Hr	28 m ³ /24 Hrs
CRUISING FUEL CONSUMPTION	242 USG/Hr	22 m ³ /24 Hrs

DISCHARGE RATES

DRILL WATER	550 USG/min @ 300 ft.	125 m ³ /Hr @ 91 m
POTABLE WATER	321 USG/min @ 300 ft.	73 m ³ /Hr @ 91 m
FUEL	550 USG/min @ 300 ft.	125 m ³ /Hr @ 91 m
METHANOL	0 USG/min @ 0 ft.	0 m ³ /Hr @ 0 m
LIQUID MUD	2,000 USG/min @ 165 ft.	454 m ³ /Hr @ 50 m
DRY BULK	2,013 ft. ³ /Hr @ 348 PSI	57 m ³ /Hr @ 24 bar
BRINE	2,000 USG/min @ 165 ft.	454 m ³ /Hr @ 50 m

ACCOMMODATIONS

CABINS/BERTHS	7/20
OFFICERS	2 Single, Desk & Private Head + 1 Double & Private Head
CREW	2 Quadruple Shared 2 Head
VIP	1 Double Shared 1 Head
PASSENGERS	1 Sextuple Shared 1 Head
LOUNGE	9
MESS	16

ELECTRONICS & CONTROLS

JOYSTICK	SIMRAD SJS 01
DEPTH SOUNDER	Sperry ES 5000
DGPS	None
DYNAMIC POSITIONING	None
GPS	Micrologic ML-250/Trimble NT 200D
GYRO	Robertson RGC 11
SSB	Yes
VHF	4 x Sea 156
RADAR(S)	1 Decca, BT910, (1) Decca BT925
RADIO SYSTEM	Sperry A3 GMDSS
INTERNET E-MAIL	Globe Offshore
WEATHER RADIO	XM

SPECIAL EQUIPMENT

CRANE	None 0 LT @ 0 ft. -- 0 MT @ 0 M
SURVIVAL CRAFT	(2) 25 Man Inflatable Life Rafts
WINDLASS	Mc Elroy FCWH-6 0 inches 0 ft. 0 mm 0 M
RESCUE BOAT	Ambar AM420 Rib w/ 50HP motor
EXTERNAL FIFI	1 x 2600 GPM / 1 x 600 m ³ /hr 2 x 5200 GPM / 2 x 1200 m ³ /hr
NO OF MONITORS	3
TOTAL CAPACITY	13000 GPM / 3000 m ³ /hr

DOCUMENTATION

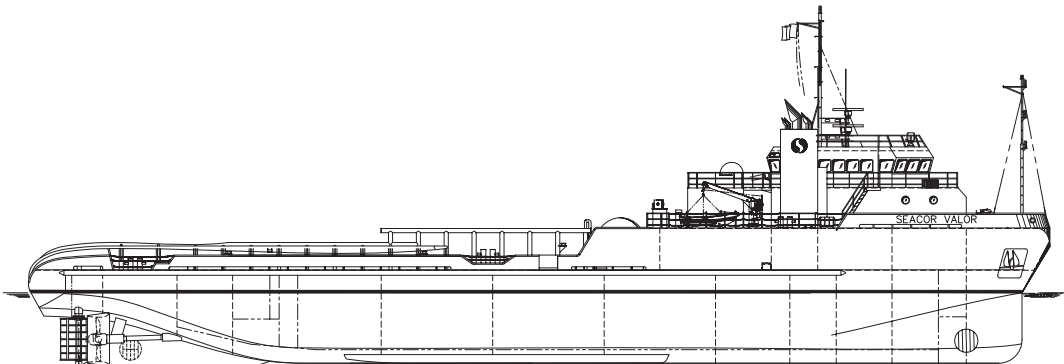
CLASS	8,000 BHP AHTS
FLAG	United States
SOLAS	Full
USCG	USCG Sub L, OSV, ABS +A1 AMS, Solas
YEAR BUILT	1999
OFFICIAL NUMBER	1065403
RADIO CALL SIGN	WCY9954
BUILDER	Halter Marine

This specification is preliminary and subject to change without notice. Exact tank capacities, deadweight, deck cargo capacity and other figures that have been calculated and may change when the actual vessel is delivered.

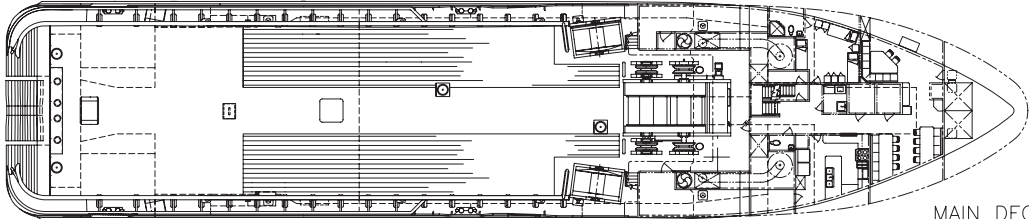
8,000 BHP – AHTS SEACOR VALOR



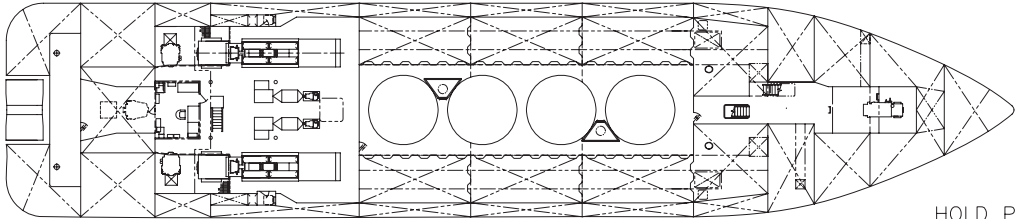
8,000 BHP – AHTS SEACOR VALOR



OUTBOARD PROFILE



MAIN DECK



HOLD PLAN