

# 8,000 BHP – AHTS SEACOR VENTURE



8,000 BHP – AHTS SEACOR VENTURE

## MAIN PARTICULARS

LENGTH OVERALL	220 ft.	67 m
LENGTH BP	210 ft.	64 m
BEAM	49.21 ft.	15 m
DEPTH	19.69 ft.	6 m
LIGHT DRAFT	10 ft.	3 m
LOADED DRAFT	16.4 ft.	5.14 m
SUMMER FREEBOARD	3 ft.	1 m
LIGHTSHIP	1,704 LT.	1,735 MT.

## CAPACITIES

DRILL WATER	220,871.86 USG	836 m <sup>3</sup>
POTABLE WATER	34,081.9 USG	165 m <sup>3</sup>
FUEL	215,587.85 USG	816 m <sup>3</sup>
LIQUID MUD	3,320 BBLS	528 m <sup>3</sup>
DRY BULK	8,369 ft. <sup>3</sup>	236 m <sup>3</sup>
BRINE	139,498 USG	528 m <sup>3</sup>
MAX RIG CHAIN	6,001 ft.	1,829 m
DEADWEIGHT	2,056 LT.	2,093 MT.

## CARGO DECK

TONNAGE	984.09 LT.	1,002 MT.
STRENGTH	0.51 LT./ft. <sup>2</sup>	5 MT./m <sup>2</sup>
LENGTH	124.67 ft.	38 m
WIDTH	39.37 ft.	12 m
CLEAR AREA	4,747.04 ft. <sup>2</sup>	402 m <sup>2</sup>

## TONNAGE

GRT	1,576 tons
NRT	472 tons

## MACHINERY

MAIN ENGINES	2 EMD 16-710-G7B
BRAKE HORSEPOWER	8000
REDUCTION GEARS	2 Reintjes Double Reduction
GEAR RATIO	4.55:1
PROPELLERS	2 Berg 4 Blade CPP
RUDDERS	2 Yoked Fishtail
AUXILIARY GENERATORS	(2) 8-V-71 Detroit Diesel
EMERGENCY GENERATOR	Baylor M415 JAB-006 75kw @1800rpm
BOW THRUSTERS	Ship Machinery SMI-FU63-1000HP

## TOWING & ANCHOR HANDLING

WINCH MODEL	Fritz-Culver FCSL 400W/400W
LINE PULL	357 LT. 363 MT.
WIRE CAPACITY	9,000 ft. x 3 inch wire 2,743 M. x 76 mm. of wire
BOLLARD PULL	104 LT. 103.75 MT.
CHAIN STOPPER(S)	1 Triplex Shark Jaw 700 LT. – 713 MT.
TOWING PINS	2 x Vertical TP48
STERN ROLLER	7 ft. x 13 ft. - 500 LT. 2 M. x 4 M. - 509 MT.
TUGGER WINCHES	2 x 20 LT. – 20 MT.

## PERFORMANCE

MAXIMUM SPEED	13 knots
CRUISING SPEED	11 knots
MAXIMUM FUEL CONSUMPTION	242 USG/Hr 22 m <sup>3</sup> /24 Hrs
CRUISING FUEL CONSUMPTION	176 USG/Hr 16 m <sup>3</sup> /24 Hrs

## DISCHARGE RATES

DRILL WATER	550 USG/min @ 300 ft.	125 m <sup>3</sup> /Hr @ 91 m
POTABLE WATER	321 USG/min @ 300 ft.	73 m <sup>3</sup> /Hr @ 91 m
FUEL	550 USG/min @ 300 ft.	125 m <sup>3</sup> /Hr @ 91 m
METHANOL	0 USG/min @ 0 ft.	0 m <sup>3</sup> /Hr @ 0 m
LIQUID MUD	1,000 USG/min @ 164 ft.	227 m <sup>3</sup> /Hr @ 50 m
DRY BULK	1,000 ft. <sup>3</sup> /Hr @ 80 PSI	28 m <sup>3</sup> /Hr @ 6 bar
BRINE	1,000 USG/min @ 164 ft.	227 m <sup>3</sup> /Hr @ 50 m

## ACCOMMODATIONS

CABINS/BERTHS	7/22
OFFICERS	2 Single, Desk & Private Head
CREW	3 Quadruple Shared 2 Head
VIP	1 Double Shared 1 Head
PASSENGERS	1 Sextuple Shared 1 Head
LOUNGE	9
MESS	16

## ELECTRONICS & CONTROLS

JOYSTICK	Simrad SJS-01
DEPTH SOUNDER	Sperry ES-5000 & Furuno FCB-271
DGPS	Sperry/Trimble NT-200D
DYNAMIC POSITIONING	None
GPS	Trimble NT-200D & Furuno GP-30
GYRO	Robertson RGC-11
SSB	Sperry RE2100/Sperry T2130/N2171
VHF	Four Sea 156
RADAR(S)	Decca BT-910 & Decca BT-925
RADIO SYSTEM	Sperry A3 GMDSS
INTERNET E-MAIL	Globe Offshore
WEATHER RADIO	XM

## SPECIAL EQUIPMENT

CRANE	None 0 LT @ 0 ft. – 0 MT @ 0 M
SURVIVAL CRAFT	(2) 25 Man & (2) 10 Man Inflatable Life Rafts
WINDLASS	McElroy FCWH-6 0 inches 0 ft. 0 mm 0 M
RESCUE BOAT	Ambar AM420 RIB w/50HP Motor
EXTERNAL FIFI	2600 GPM
NUMBER OF MONITORS	1

## DOCUMENTATION

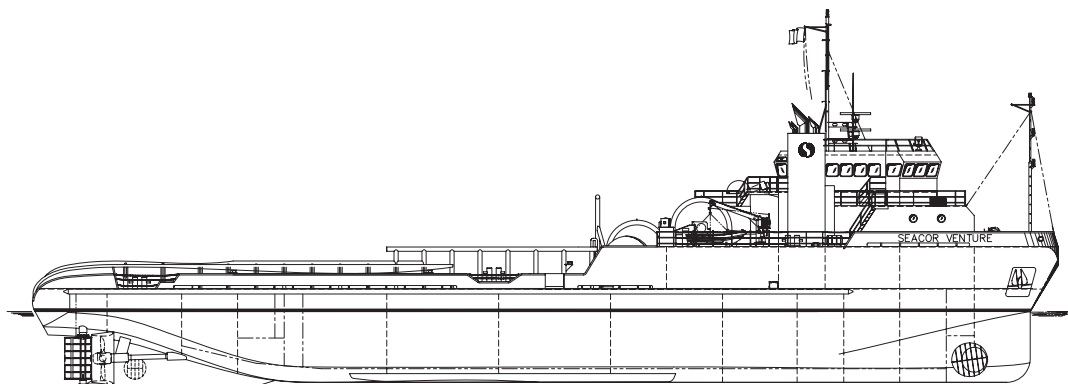
CLASS	8,000 BHP AHTS
FLAG	United States
SOLAS	Full
USCG	USCG Sub L, OSV, ABS +A1 AMS, Solas
YEAR BUILT	2000
OFFICIAL NUMBER	1065402
RADIO CALL SIGN	WCY9955
BUILDER	Halter Marine Inc.

This specification is preliminary and subject to change without notice. Exact tank capacities, deadweight, deck cargo capacity and other figures that have been calculated and may change when the actual vessel is delivered.

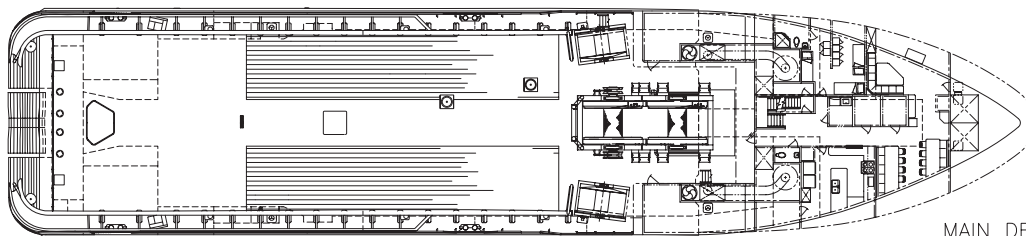
# 8,000 BHP – AHTS SEACOR VENTURE



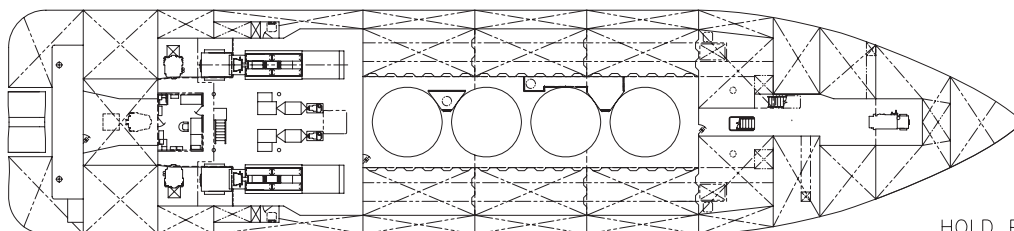
8,000 BHP – AHTS SEACOR VENTURE



OUTBOARD PROFILE



MAIN DECK



HOLD PLAN