

# 8,000 BHP – AHTS SEACOR VOYAGER



8,000 BHP – AHTS SEACOR VOYAGER

## DIMENSIONS

LENGTH OVERALL	67.00 m	220.00 ft
BREADTH MLD	14.00 m	46.00 ft
DEPTH	6.00 m	20.00 ft
DRAFT (LIGHT)	2.00 m	8.00 ft
DRAFT (LOADED)	5.00 m	17.00 ft
DEADWEIGHT	2015 t	
GROSS TONNAGE	1063 t	
NET TONNAGE	483 t	

## CAPACITIES/TRANSFER RATES

FUEL OIL	693 m <sup>3</sup> – 125 m <sup>3</sup> /hr @ 91 m
DRILL WATER	800 m <sup>3</sup> – 125 m <sup>3</sup> /hr @ 91 m
POTABLE WATER	120 m <sup>3</sup> – 73 m <sup>3</sup> /hr @ 91 m
DRY BULK	237 m <sup>3</sup> – 28 t/hr @ 6 bar
LIQUID MUD	224.4 m <sup>3</sup> – 2 x 50 m <sup>3</sup> /hr @ 18 bar
BRINE	525 m <sup>3</sup> – 227 m <sup>3</sup> /hr @ 50 m
CONNECTION	
FREE DECK SPACE	38 m x 11 m = 418 m <sup>2</sup>
DECK STRENGTH	2 t/m <sup>2</sup>
DISPERSANT	

## DECK EQUIPMENT

AHT WINCH	SMATCO 96 DAW55K, 250 MT, 246 LT line pull
SPOOLING DRUM	
TOW WIRE	
SPARE TOWLINE	
WORKING WIRE	
CHAIN LOCKERS	2 x 30 m <sup>3</sup>
AH TONG	
TOWING PINS	2 x vertical TP 48
SHARK JAW	
STERN ROLLER	4 m x 2 m diameter
RIG CHAIN GYPSIES	
TUGGER WINCHES	2 x 9 t
CAPSTANS	
DECK CRANE	
ANCHOR WIRES	2 x 1500 m/38 mm
WINDLASS	McElroy FCWH-6
ANCHORS	2 x 2400 kg stockless + 1 spare
JOYSTICK	SIMRAD SJS 01
CAPSTANS	2 x 5 Ton

## MACHINERY

MAIN ENGINES	2 x EMD R16 710 G7B, 8000 BHP total
BOW THRUSTERS	1,010 BHP sml
STERN THRUSTER	none
PROPELLERS	2 x Berg 4 blade CPP
RUDDERS	2 x Yoked Fishtail
BOLLARD PULL	109 t
MAIN GENERATORS(S)	2 x 8-v-71 Detroit Diesel
AUXILIARIES GENERATORS	
SHAFT GENERATORS	none

## SPEED/CONSUMPTION

MAXIMUM SPEED	13 kts on about 28 t/day
ECONOMIC SPEED	11 kts on about 22 t/day
IN PORT	
STAND BY AT SEA	

## ACCOMMODATION

CABINS/BERTHS	7/22
OFFICERS	2
CREW MAXIMUM	3 Quadruple Shared 2 Head
VIP	1 Double Shared 1 Head
PASSENGERS	1 Sextuple Shared 1 Head
HOSPITAL	
RESCUE CAPACITY	

## FIRE FIGHTING

PUMPS	2600 gpm
MONITORS	2
THROW HEIGHT/LENGTH	–/ 137m

## STAND-BY RESCUE

RESCUE CAPACITY	
RESCUE CRAFT	Ambar AM420 Rib w/50/HP Motor
LIFE BOAT	2 x 25 man inflatable liferafts
RESCUE NETS / BASKET	

## ANTI-POLLUTION SYSTEM

DISPERSANT STORAGE	12 m <sup>3</sup>
DISPERSANTS BOOMS	2 x 7 m
BOOSTER PUMPS	4 x 700 m <sup>3</sup> /hr @ 29 m head

## NAVIGATION/COMMUNICATION

RADARS	1 x Decca BT910 & Decca BT925
GYRO	1 x Robertson RGC 11
AUTOPILOT	
GMDSS	Sperry A3
GPS	1 x Trimble NT 200D & Furuno GP-30
ECHO SOUNDER	1 x ES 5000
NAVTEX	
INMARSAT-C	
SSB	800/400 W MF/HF
VHF	
VHF PORTABLE	
INTERNET E-MAIL	Globe Wireless

## BUILT

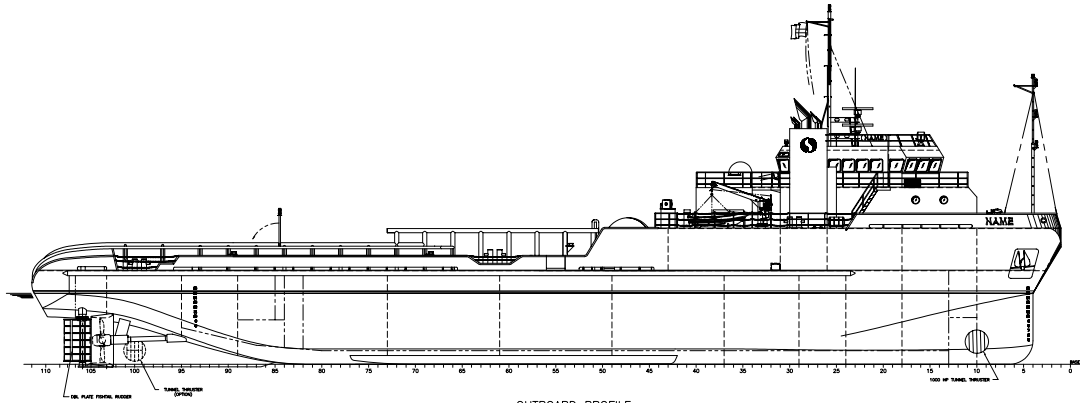
YEAR	1999
BUILDER	
CLASS	ABS, A1 Tug, AMS
FLAG / PORT OF REGISTRY	USCG
SOLAS	Full
CALL SIGN	WCY8403
OFFICIAL/IMO NUMBER	106935

This specification is preliminary and subject to change without notice. Exact tank capacities, deadweight, deck cargo capacity and other figures that have been calculated and may change when the actual vessel is delivered.

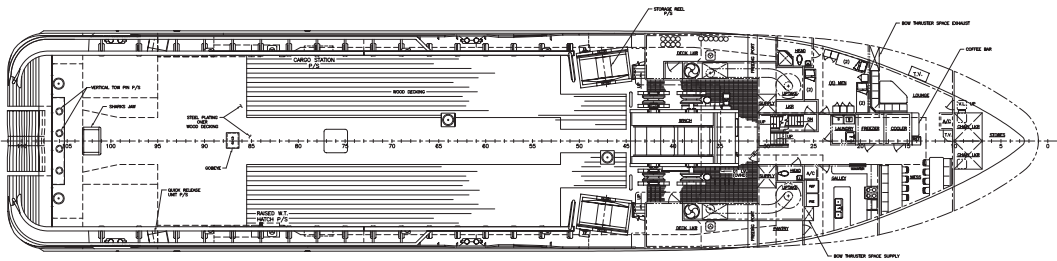
# 8,000 BHP – AHTS SEACOR VOYAGER



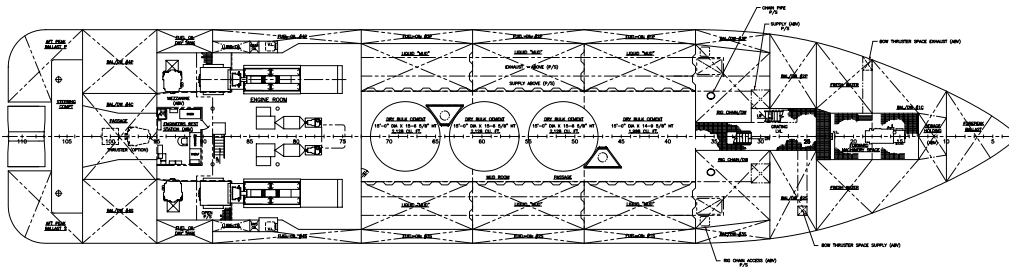
8,000 BHP – AHTS SEACOR VOYAGER



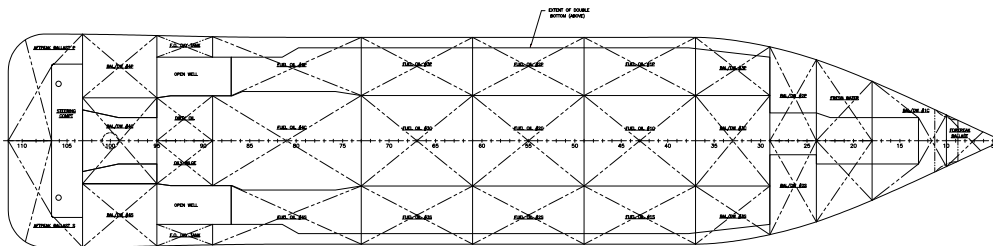
OUTBOARD PROFILE



MAIN DECK



HOLD PLAN



INNERBOTTOM