

UT771WP SEACOSCO CONGO



4600 DWT, DPS 2, FFI 1, OILREC CAPABILITY, HYBRID BATTERY POWER

MAIN PARTICULARS

	m	ft
LENGTH OVERALL	85.7	281.1
BEAM	18	59.0
DEPTH MOLDED	7.8	25.6
LIGHT DRAFT	2.9	9.6
LOADED DRAFT	6.5	21.3
LOADED DRAFT SPS	6.2	20.3
DEADWEIGHT	4600t	
DEADWEIGHT SPS	4200t	
TONNAGE (ITC) GT	4,125	
TONNAGE (ITC) NT	1,492	

CAPACITIES

	m ³	USG	Bbls	m ³ /hr	HEAD/PRESS
FUEL OIL*	1,324	349,764		200	9 bar
FRESH WATER	1,146	302,741		200	90m
WATER BALLAST*	2,842	750,777		200	90m
DRILL WATER*	2,842	750,777		200	90m
MUD*	1,085	286,627	6824	75	18 bar
BRINE*	1,085	286,627	6824	75	18 bar
BASE OIL*	227	59,967	1428	150	90m
METHANOL/LFL/OILREC	143	37,777		150	90m
DRY BULK	300	10,594ft ³		2 x 30m ³ /min	Free air (5.6Bar)

* Denotes Dual use tanks

CARGO DECK

DECK STRENGTH	10MT/m ²
DECK LOAD CAPACITY	2050 MT
CLEAR AREA	840m ²

MACHINERY

MAIN ENGINES	Diesel Electric Propulsion
MAIN GENERATORS	2 x MTU12V4000M33S - 1480ekW 2 x MTU8V4000M33S - 990ekW
EMERGENCY GENERATOR	Caterpillar, 250 ekW
AZIMUTH THRUSTERS	Rolls Royce Azipull FP, 1600kW
BOW TUNNEL	Rolls Royce TT2000, 790kW
BOW COMBINATION	Rolls Royce Combi TCNC, 725kW

PERFORMANCE

		MT/24hr
MAXIMUM SPEED	14.75 Knots	19.9*
CRUISING SPEED	11 Knots	11.02*
ECONOMICAL SPEED	8 Knots	7.6*
DP	-	
IN PORT	-	

* To be revised during battery power trials

DECK EQUIPMENT

TUGGER WINCHES	2 x Rolls Royce Brattvaag, 10T
CAPSTANS	2 x Rolls Royce Brattvaag, 10T
WINDLASS / MOORING	2 x Rolls Royce Brattvaag, 21T
ANCHORS	2 x SPEC 3780kg
ANCHOR CABLE	522.5m Ø48mm, K3
DECK CRANE	SWL 3T @ 2.1-16m
STABILITY TANKS	2 x Roll Reduction Tanks
CONTAINER ELEC SUPPLY	10 x Steck IP67, 230V/60Hz/16A

ELECTRONICS AND CONTROLS

Vessel is equipped with a hybrid energy storage system to minimize fuel oil consumption and aid dynamic response in all operating modes.

DYNAMIC POSTIONING	Rolls Royce Icon DP2
ERN	98, 93, 79, 73
POSITION REF 1	Cyscan MK 4 Laser Radar
POSITION REF 2	2 x DGPS
POSITION REF 3	Arranged for HPR
JOYSTICK	Rolls Royce POSCON
AUTOMATION	Rolls Royce ACON
ENERGY MANAGEMENT	Rolls Royce EMS
BATTERY SYSTEM	Corvus Orca ESS
AUTOPILOT	Raytheon NP5100
RADARS	X BAND S BAND
	Furuno FAR-3320
	Furuno FAR-3330S
ECDIS	Furuno FMD-3300
BNWAS	Rolls Royce ACON
NAVTEX	Furuno NX-700A/B
DEPTH SOUNDER	Furuno FE-800
GYRO	3 x Anschutz STD 22
GMDSS	Area A3
U-AIS AND VDR	FA-150 and VR 7000

ACCOMMODATION

		Total Berths
SINGLE CABIN	6	6
DOUBLE CABIN	18	36
4 PERSON CABIN	2	8
OFFICE	1	
CONFERENCE ROOM	1	
GYMNASIUM	1	
SMOKERS ROOM	1	
DAY ROOM	1	
HOSPITAL	1	

SPECIAL EQUIPMENT

STORED ENERGY SYSTEM	Rolls Royce /Corvus
N2 INERTING SYSTEM	Storage and Generator
MUD TANK AGITATORS	All Mud Tanks
MUD TANK HOT WATER WASHING SYSTEM	
REMOTE SOUNDING AND LOADING COMPUTER	
BALLAST WATER TREATMENT SYSTEM	
MOB / FRC	Norsafe 6 Person, 25 KTS
FIFI CLASS 1	

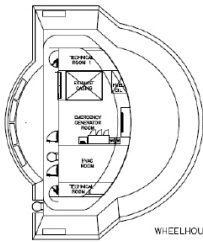
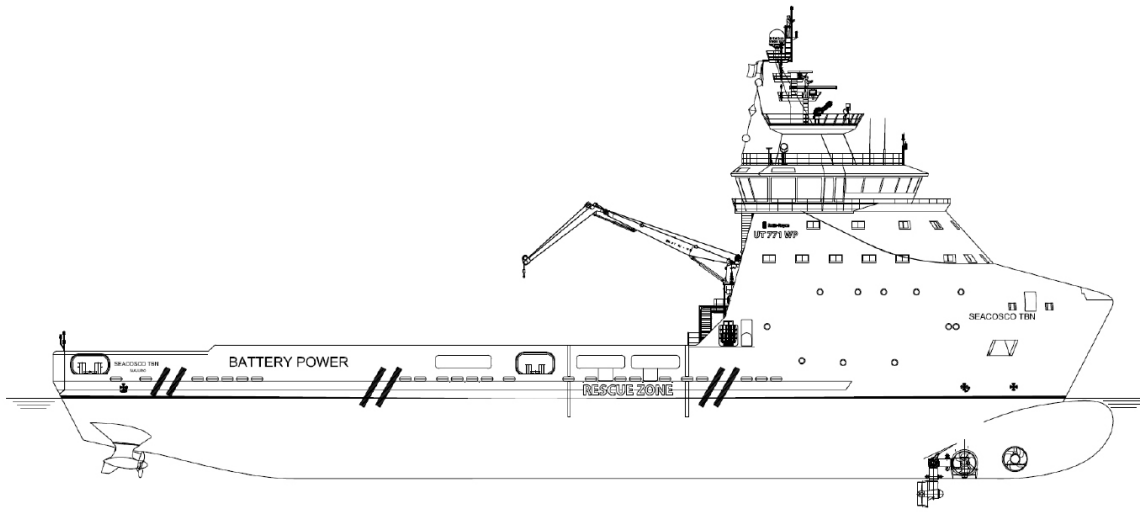
DOCUMENTATION

CLASS	DNV ✕1A1, SF, EO, Offshore Service Vessel, DK+, HL(2.8), Clean Design, LFL(*), COMFV(3)C(3), Naut OSV(A), Dynpos AUTR, Fire Fighter 1, SPS, BWM-T, BIS, Battery Power
FLAG	Marshall Islands, Majuro
SOLAS	Full
OFF NO	7878
IMO	9734032
CALL SIGN	V7WQ3
BUILD YEAR	2018
BUILDER	COSCO (Guangdong) Shipyard
HULL No	N606

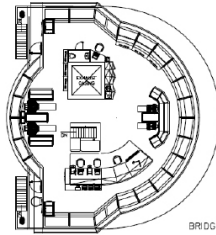
UT771WP SEACOSCO CONGO



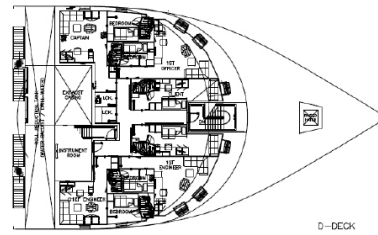
4600 DWT, DPS 2, FFI 1, OILREC CAPABILITY, HYBRID BATTERY POWER



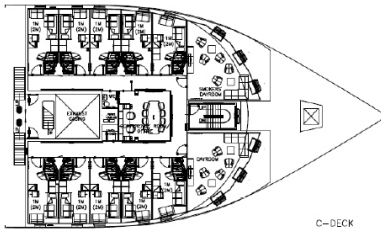
WHEELHOUSE TOP



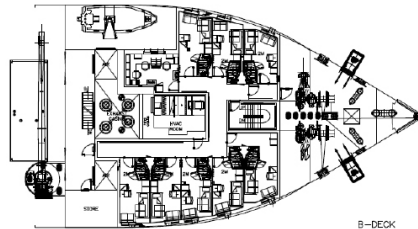
BRIDGE DECK



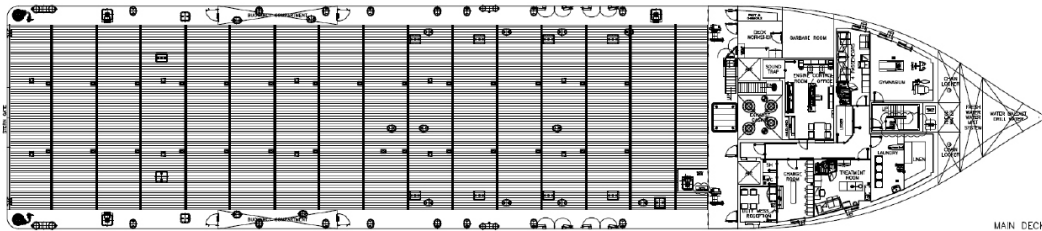
D-DECK



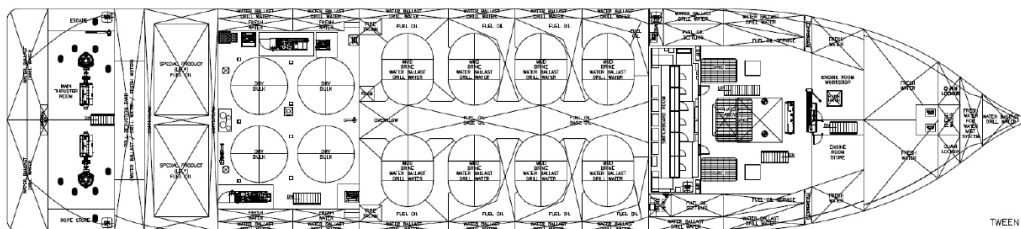
C-DECK



B-DECK



MAIN DECK



TWEEN DECK