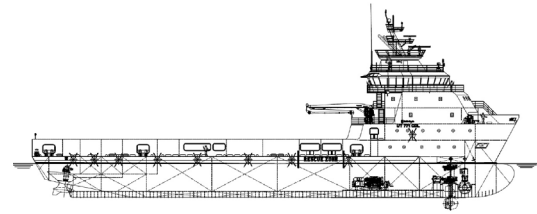


UT771CDL SEACOSCO YANGTZE



UT771CDL, 3914t DWT, DIESEL ELECTRIC PSV, DPS 2, FFI 1

MAIN PARTICULARS

	m	ft
LENGTH OVERALL	83.75	274.7
BEAM	18	59.0
DEPTH MOLDED	7	23.0
LIGHT DRAFT	2.7	8.9
DESIGN DRAFT	5.1	16.7
MAX DRAFT	5.8	19.0
DEADWEIGHT	3914t	
TONNAGE (ITC) GT	3,225	
TONNAGE (ITC) NT	1,316	

CAPACITIES

	m ³	USG	Bbls	m ³ /hr	Head/Press
FUEL OIL*	1,196	315,870		200	90m
FRESH WATER	910	240,423		200	90m
WATER BALLAST*	2,118	559,463		200	90m
DRILL WATER*	2,118	559,463		200	90m
MUD*	1,018	269,006	6405	75	18 bar
BRINE*	1,018	269,006	6405	75	18 bar
BASE OIL*	216	56,955	1356	150	90m
DRY BULK	319	84,192		2 X 23m ³ /min	Free air (5.6Bar)

* Denotes dual-use tanks

CARGO DECK

DECK STRENGTH	5MT/m ²
DECK LOAD CAPACITY	2100 MT
CLEAR AREA	875m ²

MACHINERY

MAIN ENGINES	Diesel Electric Propulsion
MAIN GENERATORS	4 x CATERPILLAR 3512C 4 x 1580 Kva, 690 VAC, 60 Hz
EMERGENCY GENERATOR	Caterpillar C18, 420 kW
AZIMUTH THRUSTERS	Rolls Royce Azipull FP, 1600kW
BOW TUNNEL	Rolls Royce TT2000, 790kW
BOW COMBINATION	Rolls Royce Retractable ULS 911 FP, 725kW

PERFORMANCE

		MT/24hr
MAXIMUM SPEED	14 Knots	19.5
CRUISING SPEED	11 Knots	8.4
ECONOMICAL SPEED	10 Knots	6.2
DP	-	
IN PORT	-	

DECK EQUIPMENT

TUGGER WINCHES	2 x Rolls Royce Brattvaag, 10T
CAPSTANS	2 x Rolls Royce Brattvaag, 10T
WINDLASS / MOORING	2 x Rolls Royce Brattvaag, 15T
ANCHORS	2 x SPEC 3300kg
ANCHOR CABLE	495m Ø48mm, K3
DECK CRANE	Rolls Royce Odim Knuckle Boom 1x3t @ 1.8-16m
STABILITY TANKS	3 x Roll Reduction Tanks

ELECTRONICS AND CONTROLS

DYNAMIC POSITIONING	Rolls Royce Icon DP2
POSITION REF 1	Cyscan MK 4 Laser Radar
POSITION REF 2	2 x DGPS
POSITION REF 3	Radius 1000
POSITION REF 4	Arranged for HPR
GYRO	3 x Anschutz STD 22
JOYSTICK	Rolls Royce POSCON
AUTOMATION	Rolls Royce ACON
AUTOPILOT	Raytheon NP5100
RADARS	Furuno FAR-3320
	X BAND
	S BAND
	ECDIS
BNWAS	Furuno FMD-3300
NAVTEX	Rolls Royce ACON
DEPTH SOUNDER	Furuno NX-700A/B
VDR	Furuno FE-800
U-AIS	VR 7000
BRIDGE WING DOCKING STATIONS	FA-150
GMDSS	Area A3
CONTAINER SUPPLY	9 x 440V, 60Hz, 32A 9 x 240V, 60Hz, 20A

ACCOMMODATION

		Total Berths
SINGLE CABIN	10	10
DOUBLE CABIN	14	28
4 PERSON CABIN	2	8
OFFICER MESS	1	
CREW MESS	1	
OFFICE	1	
GYMNASIUM	1	
DAY ROOM	1	
HOSPITAL	1	

SPECIAL EQUIPMENT

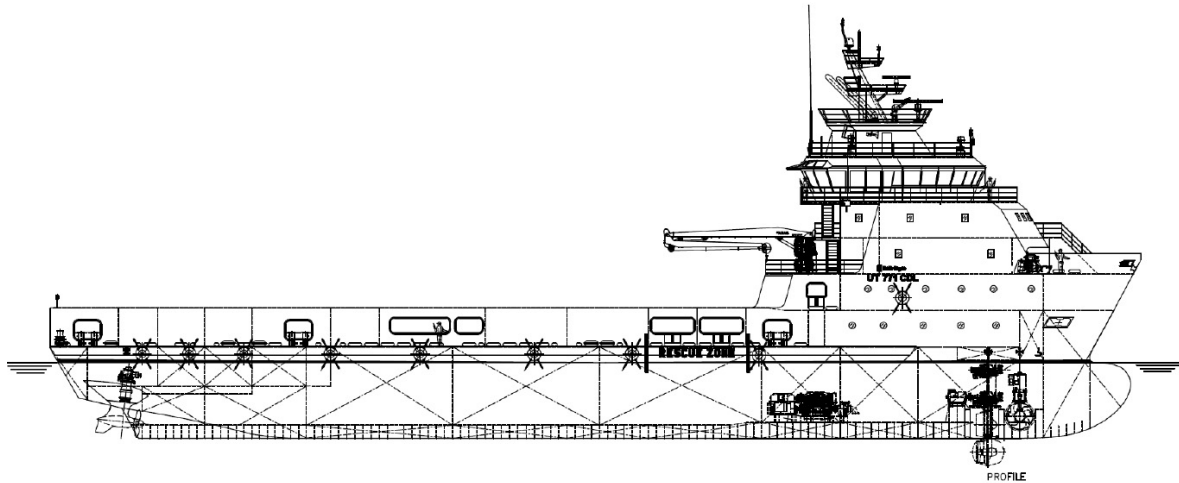
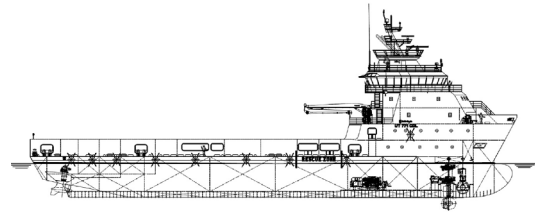
MUD TANK AGITATORS	All Mud Tanks
MUD TANK HOT WATER WASHING SYSTEM	
REMOTE SOUNDING AND LOADING COMPUTER	
LOADING COMPUTER & STABILITY PROGRAM	
REMOTE SOUNDING SYSTEM	
BALLAST WATER TREATMENT SYSTEM	
MOB / FRC	Norsafe 6 Person, 25 KTS
FFI CLASS 1	

DOCUMENTATION

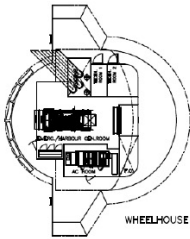
CLASS	✳A1, Offshore Support Vessel, Circle E, ✳AMS, ✳ACCU, ✳DPS-2, ENVIRO, HAB(WB), UWILD, Fire Fighting Vessel Class 1
FLAG	Marshall Islands, Majuro
SOLAS	Full
OFF NO	7873
IMO	9659373
CALL SIGN	V7UJ9
BUILD YEAR	2018
BUILDER	COSCO (GUANGDONG) SHIPYARD
HULL NO	494

This specification is preliminary and subject to change without notice. Exact tank capacities, deadweight, deck cargo capacity and other figures that have been calculated may change when the actual vessel is delivered.

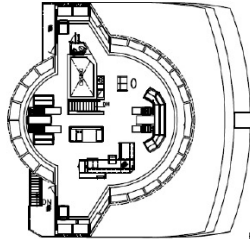
UT771CDL SEACOSCO YANGTZE



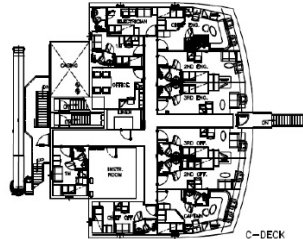
PROFILE



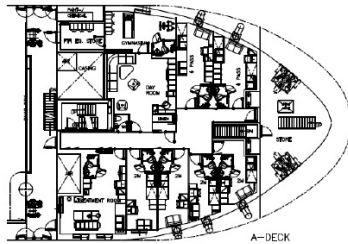
WHEELHOUSE TOP



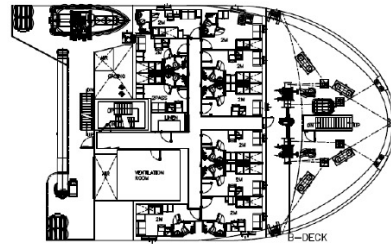
BRIDGE DECK



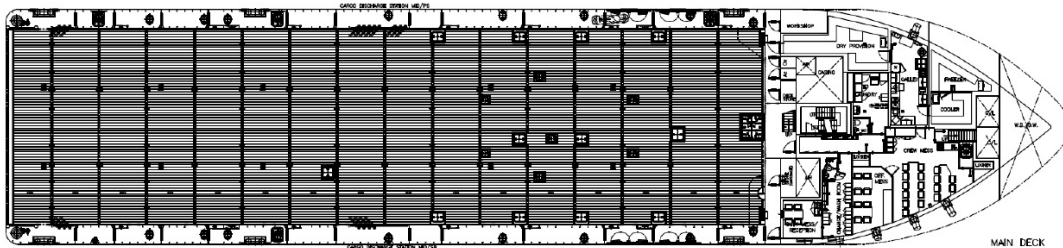
C-DECK



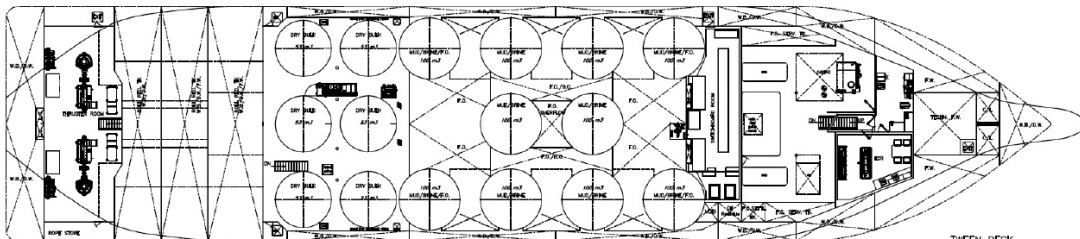
A-DECK



B-DECK



MAIN DECK



TWEEN DECK

UT771CDL, 3914t DWT, DIESEL ELECTRIC PSV, DPS 2, FFI 1